



SERVICE GUIDE

DETAILED INFORMATION ABOUT WHAT WE OFFER

Ai

AIMLPROGRAMMING.COM

Abstract: Our AI Automobile Safety Systems Nakhon Ratchasima provides comprehensive solutions to enhance vehicle safety. Utilizing advanced image and video processing techniques, our system leverages AI algorithms and machine learning to offer collision avoidance, lane departure warning, traffic sign recognition, driver monitoring, and vehicle diagnostics. By identifying and locating objects within images or videos, our technology enables businesses to detect potential hazards, alert drivers, and take evasive actions. Through this system, we aim to revolutionize vehicle safety, significantly reducing accidents and saving lives.

AI Automobile Safety Systems Nakhon Ratchasima

This document showcases the capabilities of our AI Automobile Safety Systems Nakhon Ratchasima, a cutting-edge solution designed to enhance vehicle safety through advanced image and video processing techniques.

Our system leverages the power of AI algorithms and machine learning to provide businesses with a comprehensive suite of safety features, including:

- Collision Avoidance
- Lane Departure Warning
- Traffic Sign Recognition
- Driver Monitoring
- Vehicle Diagnostics

Through this document, we aim to demonstrate our expertise in this field and showcase how our AI Automobile Safety Systems Nakhon Ratchasima can revolutionize vehicle safety, reduce accidents, and save lives.

SERVICE NAME

AI Automobile Safety Systems Nakhon Ratchasima

INITIAL COST RANGE

\$10,000 to \$20,000

FEATURES

- Collision Avoidance
- Lane Departure Warning
- Traffic Sign Recognition
- Driver Monitoring
- Vehicle Diagnostics

IMPLEMENTATION TIME

6-8 weeks

CONSULTATION TIME

1-2 hours

DIRECT

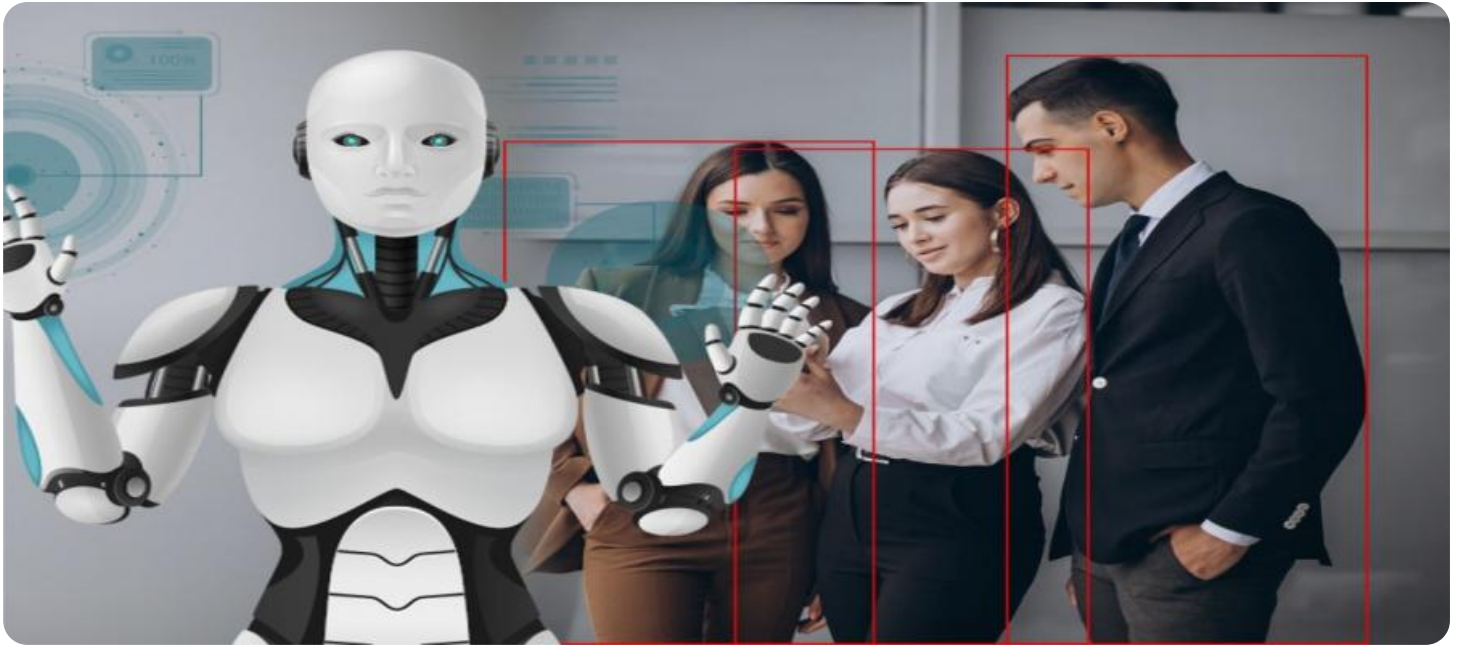
<https://aimlprogramming.com/services/ai-automobile-safety-systems-nakhon-ratchasima/>

RELATED SUBSCRIPTIONS

- Ongoing support license
- Advanced features license
- Premium support license

HARDWARE REQUIREMENT

Yes



AI Automobile Safety Systems Nakhon Ratchasima

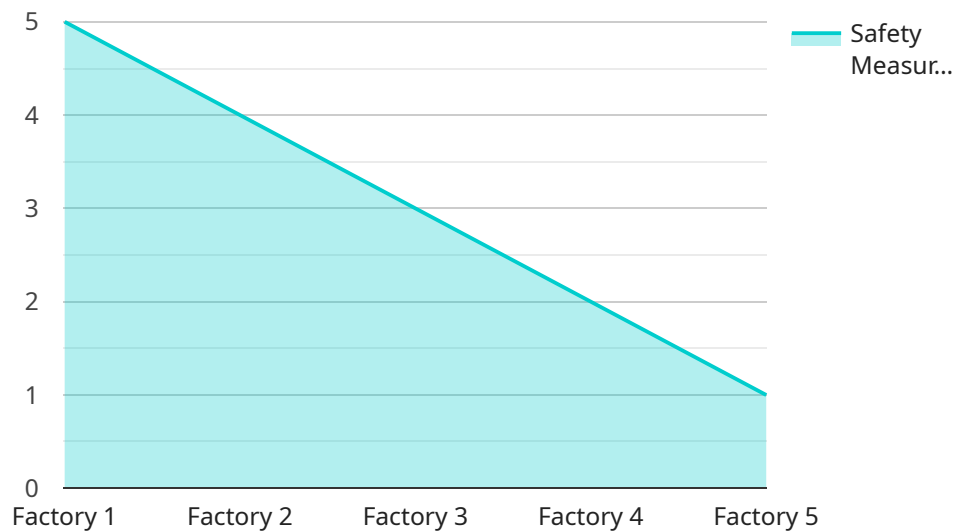
AI Automobile Safety Systems Nakhon Ratchasima is a powerful technology that enables businesses to automatically identify and locate objects within images or videos. By leveraging advanced algorithms and machine learning techniques, AI Automobile Safety Systems Nakhon Ratchasima offers several key benefits and applications for businesses:

- 1. Collision Avoidance:** AI Automobile Safety Systems Nakhon Ratchasima can be used to detect and track objects in the vehicle's path, such as other vehicles, pedestrians, and cyclists. This information can be used to alert the driver of potential collisions and to take evasive action if necessary.
- 2. Lane Departure Warning:** AI Automobile Safety Systems Nakhon Ratchasima can be used to detect when a vehicle is drifting out of its lane. This information can be used to alert the driver and to help them stay in their lane.
- 3. Traffic Sign Recognition:** AI Automobile Safety Systems Nakhon Ratchasima can be used to recognize traffic signs, such as stop signs, speed limit signs, and yield signs. This information can be used to alert the driver of upcoming traffic regulations and to help them obey the law.
- 4. Driver Monitoring:** AI Automobile Safety Systems Nakhon Ratchasima can be used to monitor the driver's behavior, such as their eye movements, head movements, and body movements. This information can be used to detect signs of fatigue or distraction and to alert the driver if they need to take a break.
- 5. Vehicle Diagnostics:** AI Automobile Safety Systems Nakhon Ratchasima can be used to diagnose vehicle problems, such as engine problems, transmission problems, and brake problems. This information can be used to alert the driver of potential problems and to help them get their vehicle repaired.

AI Automobile Safety Systems Nakhon Ratchasima offers businesses a wide range of applications, including collision avoidance, lane departure warning, traffic sign recognition, driver monitoring, and vehicle diagnostics, enabling them to improve safety, reduce accidents, and save lives.

API Payload Example

The provided payload pertains to an AI Automobile Safety Systems service, specifically the Nakhon Ratchasima system.



DATA VISUALIZATION OF THE PAYLOADS FOCUS

This cutting-edge solution leverages AI algorithms and machine learning to enhance vehicle safety through advanced image and video processing techniques. The system offers a comprehensive suite of safety features, including collision avoidance, lane departure warning, traffic sign recognition, driver monitoring, and vehicle diagnostics. By utilizing these capabilities, the AI Automobile Safety Systems Nakhon Ratchasima aims to reduce accidents, save lives, and revolutionize vehicle safety. It showcases the service's expertise in the field of AI-powered automotive safety systems.

```
▼ [
  ▼ {
    "device_name": "AI Automobile Safety System",
    "sensor_id": "AAS12345",
    ▼ "data": {
      "sensor_type": "AI Automobile Safety System",
      "location": "Nakhon Ratchasima",
      ▼ "factories_and_plants": {
        "factory_name": "Factory 1",
        "factory_id": "F12345",
        "plant_name": "Plant 1",
        "plant_id": "P12345",
        ▼ "safety_measures": {
          "autonomous_emergency_braking": true,
          "lane_departure_warning": true,
          "blind_spot_monitoring": true,
```

```
        "adaptive_cruise_control": true,  
        "forward_collision_warning": true  
    },  
    },  
    "industry": "Automotive",  
    "application": "Safety",  
    "calibration_date": "2023-03-08",  
    "calibration_status": "Valid"  
}  
}  
]
```

AI Automobile Safety Systems Nakhon Ratchasima Licensing

Our AI Automobile Safety Systems Nakhon Ratchasima service requires a license to operate. We offer three types of licenses, each with its own set of features and benefits:

1. **Ongoing support license:** This license provides access to our ongoing support team, which can help you with any issues you may encounter while using our service. This license also includes access to our knowledge base and documentation.
2. **Advanced features license:** This license provides access to our advanced features, such as collision avoidance and lane departure warning. These features can help you improve the safety of your vehicles and reduce the risk of accidents.
3. **Premium support license:** This license provides access to our premium support team, which offers 24/7 support. This license also includes access to our priority support line and a dedicated account manager.

The cost of our licenses varies depending on the type of license and the number of vehicles you need to equip. Please contact us for a quote.

How to choose the right license for you

The best way to choose the right license for you is to consider your specific needs and requirements. If you need ongoing support and access to our advanced features, then the Advanced Features License is a good option. If you need 24/7 support and a dedicated account manager, then the Premium Support License is a good option.

We also offer a free trial of our service so you can try it out before you buy it. To sign up for a free trial, please contact us.

Frequently Asked Questions:

What are the benefits of using AI Automobile Safety Systems Nakhon Ratchasima?

AI Automobile Safety Systems Nakhon Ratchasima offers a number of benefits, including collision avoidance, lane departure warning, traffic sign recognition, driver monitoring, and vehicle diagnostics.

How much does AI Automobile Safety Systems Nakhon Ratchasima cost?

The cost of AI Automobile Safety Systems Nakhon Ratchasima varies depending on the specific needs of your project. Factors that affect the cost include the number of vehicles to be equipped, the type of hardware required, and the level of support required.

How long does it take to implement AI Automobile Safety Systems Nakhon Ratchasima?

The implementation time for AI Automobile Safety Systems Nakhon Ratchasima varies depending on the complexity of the project and the resources available. However, we typically estimate a 6-8 week implementation period.

What kind of hardware is required for AI Automobile Safety Systems Nakhon Ratchasima?

AI Automobile Safety Systems Nakhon Ratchasima requires specialized hardware that is designed to work with our software. We offer a variety of hardware options to choose from, depending on the specific needs of your project.

What kind of support is available for AI Automobile Safety Systems Nakhon Ratchasima?

We offer a variety of support options for AI Automobile Safety Systems Nakhon Ratchasima, including ongoing support, advanced features support, and premium support.

AI Automobile Safety Systems Nakhon Ratchasima Project Timeline and Costs

Timeline

1. Consultation Period: 1-2 hours

During this period, we will discuss your specific needs and requirements, as well as provide a demonstration of the AI Automobile Safety Systems Nakhon Ratchasima technology.

2. Implementation: 6-8 weeks

The implementation time may vary depending on the complexity of the project and the resources available.

Costs

The cost of the AI Automobile Safety Systems Nakhon Ratchasima service varies depending on the specific needs of your project. Factors that affect the cost include:

- Number of vehicles to be equipped
- Type of hardware required
- Level of support required

The cost range for the service is as follows:

- Minimum: \$10,000
- Maximum: \$20,000

Meet Our Key Players in Project Management

Get to know the experienced leadership driving our project management forward: Sandeep Bharadwaj, a seasoned professional with a rich background in securities trading and technology entrepreneurship, and Stuart Dawsons, our Lead AI Engineer, spearheading innovation in AI solutions. Together, they bring decades of expertise to ensure the success of our projects.



Stuart Dawsons

Lead AI Engineer

Under Stuart Dawsons' leadership, our lead engineer, the company stands as a pioneering force in engineering groundbreaking AI solutions. Stuart brings to the table over a decade of specialized experience in machine learning and advanced AI solutions. His commitment to excellence is evident in our strategic influence across various markets. Navigating global landscapes, our core aim is to deliver inventive AI solutions that drive success internationally. With Stuart's guidance, expertise, and unwavering dedication to engineering excellence, we are well-positioned to continue setting new standards in AI innovation.



Sandeep Bharadwaj

Lead AI Consultant

As our lead AI consultant, Sandeep Bharadwaj brings over 29 years of extensive experience in securities trading and financial services across the UK, India, and Hong Kong. His expertise spans equities, bonds, currencies, and algorithmic trading systems. With leadership roles at DE Shaw, Tradition, and Tower Capital, Sandeep has a proven track record in driving business growth and innovation. His tenure at Tata Consultancy Services and Moody's Analytics further solidifies his proficiency in OTC derivatives and financial analytics. Additionally, as the founder of a technology company specializing in AI, Sandeep is uniquely positioned to guide and empower our team through its journey with our company. Holding an MBA from Manchester Business School and a degree in Mechanical Engineering from Manipal Institute of Technology, Sandeep's strategic insights and technical acumen will be invaluable assets in advancing our AI initiatives.