

SERVICE GUIDE

DETAILED INFORMATION ABOUT WHAT WE OFFER



AIMLPROGRAMMING.COM

Abstract: AI Chemical Safety Monitoring Pattaya utilizes advanced algorithms and machine learning to provide businesses with automated chemical hazard detection, spill monitoring, inventory management, emergency response planning, and environmental compliance. This technology enables businesses to proactively identify and mitigate chemical risks, improve safety, and ensure regulatory adherence. By leveraging real-time data analysis, AI Chemical Safety Monitoring Pattaya empowers businesses to optimize their chemical safety practices, minimize environmental impact, and enhance overall operational efficiency.

AI Chemical Safety Monitoring Pattaya

AI Chemical Safety Monitoring Pattaya is a cutting-edge solution designed to empower businesses with the ability to proactively detect and manage chemical hazards and risks in real-time. This advanced technology harnesses the power of AI algorithms and machine learning to provide a comprehensive suite of benefits and applications for businesses seeking to enhance their chemical safety practices.

Through this document, we aim to showcase our expertise and understanding of AI Chemical Safety Monitoring Pattaya. We will delve into the key capabilities of this technology, demonstrating how it can effectively address the challenges of chemical safety management. By leveraging AI-driven solutions, businesses can gain valuable insights, automate processes, and make informed decisions to mitigate risks and ensure compliance with regulations.

Our goal is to provide a comprehensive overview of the capabilities and applications of AI Chemical Safety Monitoring Pattaya, empowering businesses to make informed decisions and enhance their safety practices.

SERVICE NAME

AI Chemical Safety Monitoring Pattaya

INITIAL COST RANGE

\$1,000 to \$5,000

FEATURES

- Chemical Hazard Detection
- Chemical Spill Monitoring
- Chemical Inventory Management
- Emergency Response Planning
- Environmental Compliance

IMPLEMENTATION TIME

4-6 weeks

CONSULTATION TIME

1-2 hours

DIRECT

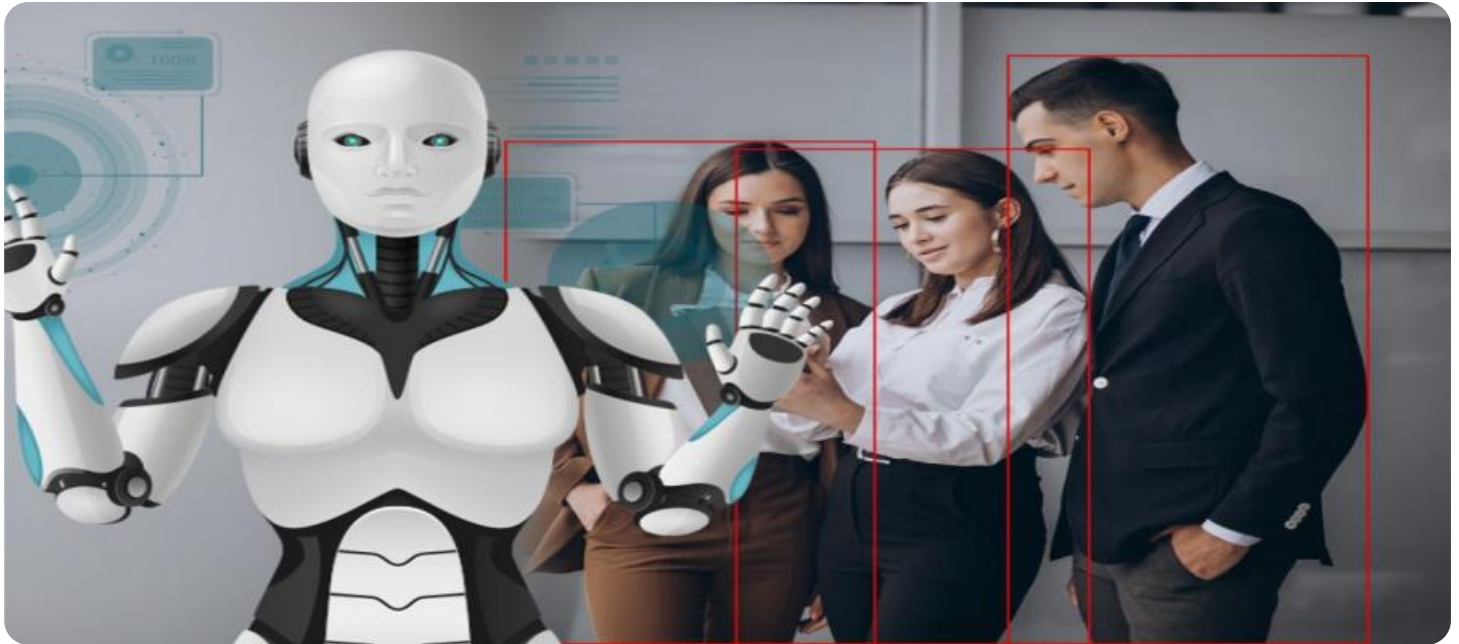
<https://aimlprogramming.com/services/ai-chemical-safety-monitoring-pattaya/>

RELATED SUBSCRIPTIONS

- Basic
- Advanced

HARDWARE REQUIREMENT

- Gas Detector
- Spill Monitor
- Inventory Tracker



AI Chemical Safety Monitoring Pattaya

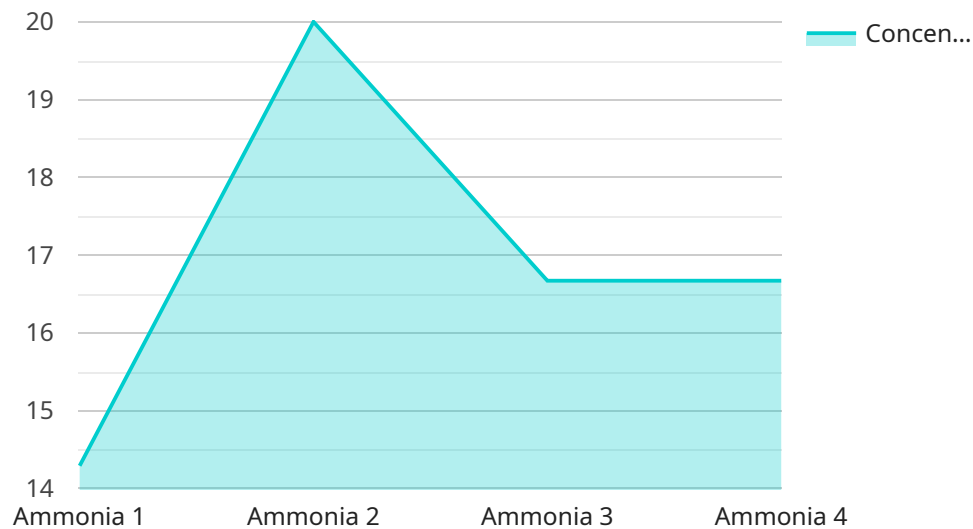
AI Chemical Safety Monitoring Pattaya is a powerful technology that enables businesses to automatically detect and identify chemical hazards and risks in real-time. By leveraging advanced algorithms and machine learning techniques, AI Chemical Safety Monitoring Pattaya offers several key benefits and applications for businesses:

- 1. Chemical Hazard Detection:** AI Chemical Safety Monitoring Pattaya can automatically detect and identify hazardous chemicals in the environment, including toxic gases, flammable liquids, and corrosive substances. By monitoring air quality and chemical concentrations in real-time, businesses can quickly identify potential hazards and take appropriate action to mitigate risks.
- 2. Chemical Spill Monitoring:** AI Chemical Safety Monitoring Pattaya can monitor for chemical spills and leaks, alerting businesses to potential hazards. By detecting spills early on, businesses can prevent the spread of hazardous chemicals, minimize environmental damage, and protect human health.
- 3. Chemical Inventory Management:** AI Chemical Safety Monitoring Pattaya can help businesses track and manage their chemical inventory, ensuring compliance with safety regulations and reducing the risk of accidents. By accurately monitoring chemical usage and storage, businesses can optimize inventory levels, minimize waste, and improve overall safety.
- 4. Emergency Response Planning:** AI Chemical Safety Monitoring Pattaya can provide valuable data for emergency response planning, helping businesses to develop effective strategies for handling chemical incidents. By analyzing historical data and identifying potential hazards, businesses can improve their preparedness and response capabilities, minimizing the impact of chemical accidents.
- 5. Environmental Compliance:** AI Chemical Safety Monitoring Pattaya can assist businesses in meeting environmental compliance requirements by monitoring chemical emissions and ensuring compliance with air quality standards. By providing accurate and real-time data, businesses can demonstrate their commitment to environmental stewardship and reduce the risk of fines or legal liabilities.

AI Chemical Safety Monitoring Pattaya offers businesses a comprehensive solution for chemical safety management, enabling them to improve safety, reduce risks, and ensure compliance with regulations. By leveraging AI and machine learning, businesses can enhance their chemical safety practices and create a safer and more sustainable work environment.

API Payload Example

The provided payload pertains to AI Chemical Safety Monitoring Pattaya, a cutting-edge solution that empowers businesses to proactively detect and manage chemical hazards and risks in real-time.



DATA VISUALIZATION OF THE PAYLOADS FOCUS

It leverages AI algorithms and machine learning to provide a comprehensive suite of benefits and applications for businesses seeking to enhance their chemical safety practices.

Through this payload, businesses can gain valuable insights, automate processes, and make informed decisions to mitigate risks and ensure compliance with regulations. It harnesses the power of AI-driven solutions to address the challenges of chemical safety management, providing businesses with a proactive and effective approach to safeguarding their operations and ensuring the safety of their employees and the environment.

```
▼ [
  ▼ {
    "device_name": "AI Chemical Safety Monitoring Pattaya",
    "sensor_id": "AI-CHEM-PAT-12345",
    ▼ "data": {
      "sensor_type": "AI Chemical Safety Monitoring",
      "location": "Factories and Plants",
      "chemical_type": "Ammonia",
      "concentration": 100,
      "temperature": 25,
      "humidity": 60,
      "pressure": 1013,
      "wind_speed": 5,
      "wind_direction": "N",
```

```
"rain_intensity": 0,  
"calibration_date": "2023-03-08",  
"calibration_status": "Valid"
```

```
}
```

```
}
```

```
]
```

AI Chemical Safety Monitoring Pattaya Licensing

AI Chemical Safety Monitoring Pattaya is a powerful technology that enables businesses to automatically detect and identify chemical hazards and risks in real-time. To access this technology, businesses require a license from our company.

License Types

1. **Basic License:** Includes core chemical safety monitoring features, such as chemical hazard detection, chemical spill monitoring, and chemical inventory management.
2. **Advanced License:** Includes additional features, such as emergency response planning, environmental compliance, and advanced analytics.

License Costs

The cost of a license depends on the type of license and the size and complexity of your business. Our pricing is competitive and tailored to meet the needs of each individual customer.

Ongoing Support and Improvement Packages

In addition to the basic and advanced licenses, we also offer ongoing support and improvement packages. These packages provide businesses with access to our team of experts, who can help with:

- System implementation and configuration
- Ongoing maintenance and support
- Software updates and improvements
- Custom development and integration

Cost of Running the Service

The cost of running AI Chemical Safety Monitoring Pattaya includes the cost of the license, the cost of the hardware, and the cost of ongoing support and improvement packages. The cost of the hardware will vary depending on the specific sensors and other equipment that you need. The cost of ongoing support and improvement packages will vary depending on the level of support that you need.

Benefits of Using AI Chemical Safety Monitoring Pattaya

AI Chemical Safety Monitoring Pattaya can help businesses improve safety, reduce risks, and ensure compliance with regulations. By automating the process of chemical safety monitoring, businesses can free up their employees to focus on other tasks. AI Chemical Safety Monitoring Pattaya can also help businesses to identify and mitigate risks that they may not be aware of.

Contact Us

To learn more about AI Chemical Safety Monitoring Pattaya and our licensing options, please contact us today.

Hardware Required for AI Chemical Safety Monitoring Pattaya

AI Chemical Safety Monitoring Pattaya requires the following hardware to collect data on chemical hazards and risks:

1. **Gas Detector:** Detects toxic gases and flammable liquids
2. **Spill Monitor:** Monitors for chemical spills and leaks
3. **Inventory Tracker:** Tracks chemical usage and storage

These hardware components work in conjunction with AI Chemical Safety Monitoring Pattaya's advanced algorithms and machine learning techniques to provide businesses with a comprehensive solution for chemical safety management.

The Gas Detector monitors air quality and chemical concentrations in real-time, detecting hazardous chemicals such as toxic gases and flammable liquids. This data is then analyzed by AI Chemical Safety Monitoring Pattaya's algorithms to identify potential hazards and alert businesses to take appropriate action.

The Spill Monitor monitors for chemical spills and leaks, providing early detection to prevent the spread of hazardous chemicals and minimize environmental damage. AI Chemical Safety Monitoring Pattaya's algorithms analyze the data from the Spill Monitor to identify the type of chemical spilled and its potential risks.

The Inventory Tracker tracks and manages chemical inventory, ensuring compliance with safety regulations and reducing the risk of accidents. AI Chemical Safety Monitoring Pattaya's algorithms analyze the data from the Inventory Tracker to optimize inventory levels, minimize waste, and improve overall safety.

By leveraging these hardware components in conjunction with its advanced algorithms and machine learning techniques, AI Chemical Safety Monitoring Pattaya provides businesses with a comprehensive solution for chemical safety management, enabling them to improve safety, reduce risks, and ensure compliance with regulations.

Frequently Asked Questions:

How does AI Chemical Safety Monitoring Pattaya work?

AI Chemical Safety Monitoring Pattaya uses advanced algorithms and machine learning techniques to analyze data from sensors and other sources to detect and identify chemical hazards and risks.

What are the benefits of using AI Chemical Safety Monitoring Pattaya?

AI Chemical Safety Monitoring Pattaya can help businesses improve safety, reduce risks, and ensure compliance with regulations.

How much does AI Chemical Safety Monitoring Pattaya cost?

The cost of AI Chemical Safety Monitoring Pattaya varies depending on the size and complexity of your business, the specific features you require, and the level of support you need.

How long does it take to implement AI Chemical Safety Monitoring Pattaya?

The implementation timeline may vary depending on the size and complexity of your business and the specific requirements of your project.

What kind of hardware is required for AI Chemical Safety Monitoring Pattaya?

AI Chemical Safety Monitoring Pattaya requires sensors and other hardware to collect data on chemical hazards and risks.

AI Chemical Safety Monitoring Pattaya: Timeline and Costs

AI Chemical Safety Monitoring Pattaya is a powerful technology that enables businesses to automatically detect and identify chemical hazards and risks in real-time. Our team of experts will work closely with you to ensure a smooth and efficient implementation process.

Timeline

1. **Consultation:** 1 hour
2. **Implementation:** 2-4 weeks

Consultation

During the consultation period, our team of experts will work with you to understand your specific needs and requirements. We will discuss your current chemical safety practices, identify areas for improvement, and develop a customized solution that meets your unique needs.

Implementation

The implementation process will vary depending on the size and complexity of your business. However, our team of experts will work closely with you to ensure a smooth and efficient implementation process. We will install the necessary hardware, configure the software, and train your staff on how to use the system.

Costs

The cost of AI Chemical Safety Monitoring Pattaya will vary depending on the size and complexity of your business, as well as the specific features and services that you require. However, our pricing is competitive and we offer a variety of flexible payment options to meet your budget.

The following is a general cost range for AI Chemical Safety Monitoring Pattaya:

- **Minimum:** \$1,000
- **Maximum:** \$5,000

Please contact us for a more detailed quote.

Meet Our Key Players in Project Management

Get to know the experienced leadership driving our project management forward: Sandeep Bharadwaj, a seasoned professional with a rich background in securities trading and technology entrepreneurship, and Stuart Dawsons, our Lead AI Engineer, spearheading innovation in AI solutions. Together, they bring decades of expertise to ensure the success of our projects.



Stuart Dawsons

Lead AI Engineer

Under Stuart Dawsons' leadership, our lead engineer, the company stands as a pioneering force in engineering groundbreaking AI solutions. Stuart brings to the table over a decade of specialized experience in machine learning and advanced AI solutions. His commitment to excellence is evident in our strategic influence across various markets. Navigating global landscapes, our core aim is to deliver inventive AI solutions that drive success internationally. With Stuart's guidance, expertise, and unwavering dedication to engineering excellence, we are well-positioned to continue setting new standards in AI innovation.



Sandeep Bharadwaj

Lead AI Consultant

As our lead AI consultant, Sandeep Bharadwaj brings over 29 years of extensive experience in securities trading and financial services across the UK, India, and Hong Kong. His expertise spans equities, bonds, currencies, and algorithmic trading systems. With leadership roles at DE Shaw, Tradition, and Tower Capital, Sandeep has a proven track record in driving business growth and innovation. His tenure at Tata Consultancy Services and Moody's Analytics further solidifies his proficiency in OTC derivatives and financial analytics. Additionally, as the founder of a technology company specializing in AI, Sandeep is uniquely positioned to guide and empower our team through its journey with our company. Holding an MBA from Manchester Business School and a degree in Mechanical Engineering from Manipal Institute of Technology, Sandeep's strategic insights and technical acumen will be invaluable assets in advancing our AI initiatives.