

# SERVICE GUIDE

DETAILED INFORMATION ABOUT WHAT WE OFFER



[AIMLPROGRAMMING.COM](http://AIMLPROGRAMMING.COM)

**Abstract:** AI Coal Safety Monitoring Pattaya is an innovative solution that employs AI and computer vision to enhance safety and efficiency in coal mining. It leverages AI-powered cameras and sensors to detect hazards, monitor workers and equipment, and provide environmental insights. Through real-time hazard detection, worker safety monitoring, equipment maintenance optimization, and data analysis, the system enables businesses to proactively prevent accidents, ensure miner well-being, minimize downtime, and protect the environment. By integrating AI Coal Safety Monitoring Pattaya, coal mining operations can significantly improve safety, optimize productivity, and foster sustainable practices.

## AI Coal Safety Monitoring Pattaya

AI Coal Safety Monitoring Pattaya is a cutting-edge technology that leverages artificial intelligence (AI) and computer vision to enhance safety and efficiency in coal mining operations. By deploying AI-powered cameras and sensors, businesses can gain valuable insights into potential hazards, improve risk management, and optimize mining processes.

This document will showcase the capabilities, skills, and understanding of our company in the field of AI Coal Safety Monitoring Pattaya. We will provide a comprehensive overview of the system, its benefits, and how it can be effectively implemented to improve the safety and productivity of coal mining operations.

Through this document, we aim to demonstrate our expertise in providing pragmatic solutions to safety issues in coal mining using coded solutions. We believe that AI Coal Safety Monitoring Pattaya has the potential to revolutionize the industry, and we are committed to providing our clients with the tools and knowledge they need to implement this technology successfully.

### SERVICE NAME

AI Coal Safety Monitoring Pattaya

### INITIAL COST RANGE

\$10,000 to \$50,000

### FEATURES

- Hazard Detection and Prevention
- Worker Monitoring and Safety
- Equipment Monitoring and Maintenance
- Environmental Monitoring
- Data Analysis and Insights

### IMPLEMENTATION TIME

8-12 weeks

### CONSULTATION TIME

2-4 hours

### DIRECT

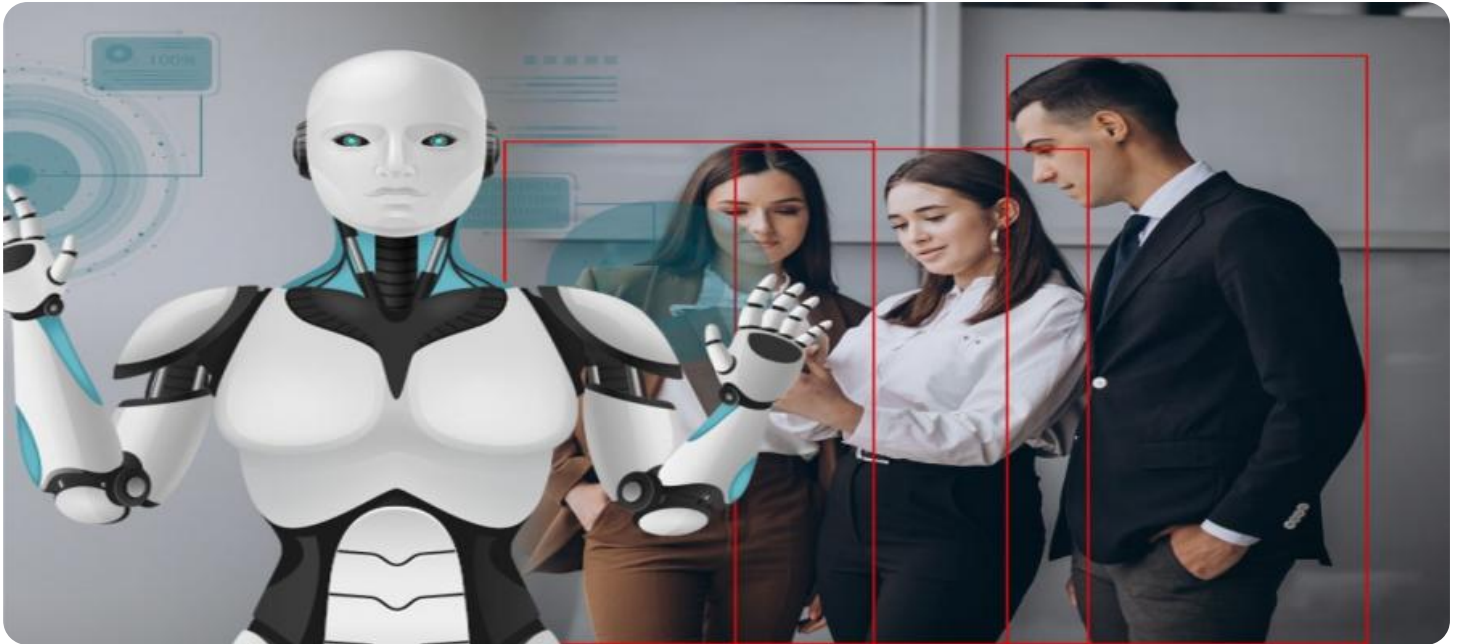
<https://aimlprogramming.com/services/ai-coal-safety-monitoring-pattaya/>

### RELATED SUBSCRIPTIONS

- Standard Subscription
- Premium Subscription

### HARDWARE REQUIREMENT

- AI Coal Safety Monitoring Camera
- AI Coal Safety Sensor



## AI Coal Safety Monitoring Pattaya

AI Coal Safety Monitoring Pattaya is a cutting-edge technology that leverages artificial intelligence (AI) and computer vision to enhance safety and efficiency in coal mining operations. By deploying AI-powered cameras and sensors, businesses can gain valuable insights into potential hazards, improve risk management, and optimize mining processes.

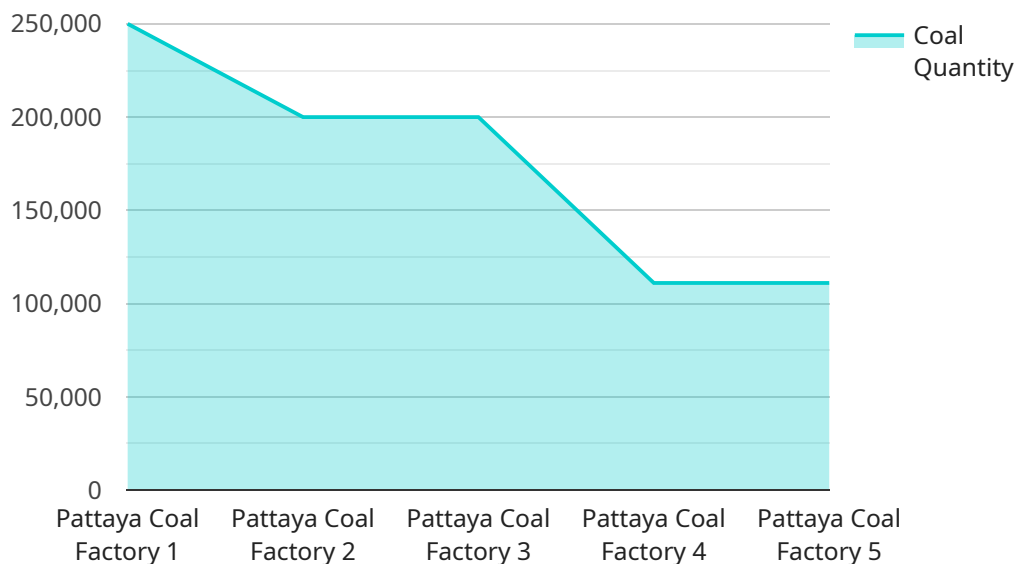
- 1. Hazard Detection and Prevention:** AI Coal Safety Monitoring Pattaya can detect and identify potential hazards in real-time, such as methane gas leaks, roof falls, and equipment malfunctions. By providing early warnings, businesses can take proactive measures to prevent accidents and ensure the safety of miners.
- 2. Worker Monitoring and Safety:** The system can track and monitor the movements and activities of miners, ensuring their safety and well-being. By detecting signs of fatigue, stress, or unsafe behavior, businesses can intervene promptly, reducing the risk of accidents and injuries.
- 3. Equipment Monitoring and Maintenance:** AI Coal Safety Monitoring Pattaya can monitor the condition and performance of mining equipment, identifying potential issues before they escalate into major breakdowns. By optimizing maintenance schedules and preventing equipment failures, businesses can minimize downtime, improve productivity, and extend the lifespan of their assets.
- 4. Environmental Monitoring:** The system can monitor environmental conditions within the mine, such as air quality, temperature, and humidity. By detecting deviations from safe levels, businesses can take necessary actions to protect the health and safety of miners and the surrounding environment.
- 5. Data Analysis and Insights:** AI Coal Safety Monitoring Pattaya collects and analyzes data from various sources, providing valuable insights into mining operations. Businesses can use this data to identify trends, improve risk management strategies, and optimize decision-making for enhanced safety and efficiency.

By integrating AI Coal Safety Monitoring Pattaya into their operations, coal mining businesses can significantly improve safety, reduce risks, optimize productivity, and ensure compliance with safety

regulations. This technology empowers businesses to create a safer and more efficient work environment for their miners, leading to increased profitability and sustainable mining practices.

# API Payload Example

The payload is a comprehensive document that showcases the capabilities, skills, and understanding of a company in the field of AI Coal Safety Monitoring Pattaya.



DATA VISUALIZATION OF THE PAYLOADS FOCUS

It provides a comprehensive overview of the system, its benefits, and how it can be effectively implemented to improve the safety and productivity of coal mining operations. The document demonstrates the company's expertise in providing pragmatic solutions to safety issues in coal mining using coded solutions. The payload highlights the potential of AI Coal Safety Monitoring Pattaya to revolutionize the industry and the company's commitment to providing clients with the tools and knowledge they need to implement this technology successfully. The payload is a valuable resource for companies looking to enhance safety and efficiency in their coal mining operations.

```
▼ [
  ▼ {
    "device_name": "AI Coal Safety Monitoring Pattaya",
    "sensor_id": "AI-CSM-Pattaya-1",
    ▼ "data": {
      "sensor_type": "AI Coal Safety Monitoring",
      "location": "Factory",
      "factory_name": "Pattaya Coal Factory",
      "factory_address": "123 Coal Factory Road, Pattaya, Thailand",
      "factory_size": "100,000 square meters",
      "factory_employees": "1,000",
      "factory_production": "1,000,000 tons of coal per year",
      "plant_name": "Pattaya Coal Plant",
      "plant_address": "456 Coal Plant Road, Pattaya, Thailand",
      "plant_size": "50,000 square meters",
```

```
"plant_employees": "500",
"plant_production": "500,000 tons of coal per year",
"coal_type": "Bituminous",
"coal_quality": "High",
"coal_quantity": "1,000,000 tons",
"coal_price": "$100 per ton",
"coal_supplier": "ABC Coal Company",
"coal_supplier_address": "789 Coal Supplier Road, Pattaya, Thailand",
"coal_supplier_phone": "+66 2 123 4567",
"coal_supplier_email": "info@abccoal.com",
"coal_delivery_date": "2023-03-08",
"coal_delivery_quantity": "100,000 tons",
"coal_delivery_price": "$10,000,000",
"coal_delivery_status": "Delivered",
"coal_storage_location": "Pattaya Coal Storage",
"coal_storage_capacity": "1,000,000 tons",
"coal_storage_inventory": "500,000 tons",
"coal_usage_rate": "100,000 tons per month",
"coal_usage_purpose": "Power generation",
"coal_safety_measures": "Fire prevention, explosion prevention, dust control",
"coal_safety_training": "Regular training for employees",
"coal_safety_inspections": "Regular inspections by government agencies",
"coal_safety_certification": "ISO 9001:2015",
"coal_safety_awards": "National Coal Safety Award 2022"
```

```
}
```

```
}
```

```
]
```

# AI Coal Safety Monitoring Pattaya Licensing

AI Coal Safety Monitoring Pattaya is a comprehensive safety solution that leverages AI and computer vision to enhance safety and efficiency in coal mining operations. Our licensing model is designed to provide businesses with flexible and cost-effective options to meet their specific needs.

## Standard Subscription

1. Access to AI Coal Safety Monitoring Pattaya platform
2. 24/7 monitoring and support
3. Regular software updates

## Premium Subscription

1. All features of Standard Subscription
2. Advanced analytics and reporting
3. Customized training and consulting

## Licensing Costs

The cost of AI Coal Safety Monitoring Pattaya varies depending on the size and complexity of the mining operation, the number of cameras and sensors required, and the subscription plan selected. However, as a general estimate, the cost ranges from \$10,000 to \$50,000 per year.

## Ongoing Support and Improvement Packages

In addition to our standard and premium subscriptions, we offer ongoing support and improvement packages to ensure that your AI Coal Safety Monitoring Pattaya system is always up-to-date and operating at peak performance. These packages include:

1. Hardware maintenance and upgrades
2. Software updates and enhancements
3. Training and consulting
4. Data analysis and reporting

The cost of these packages varies depending on the specific services required. However, we believe that they are a valuable investment for businesses that want to maximize the benefits of AI Coal Safety Monitoring Pattaya.

## Processing Power and Overseeing

AI Coal Safety Monitoring Pattaya requires significant processing power to analyze the data collected from cameras and sensors. We provide a range of hardware options to meet the specific needs of each mining operation. Our team of experts can also help you design and implement a system that is scalable and efficient.

In addition to processing power, AI Coal Safety Monitoring Pattaya also requires human oversight to ensure that the system is operating properly and that any alerts are investigated and resolved

promptly. We offer a range of services to help businesses with this, including:

1. 24/7 monitoring and support
2. Remote troubleshooting
3. On-site inspections

We believe that AI Coal Safety Monitoring Pattaya is a powerful tool that can help businesses improve safety and efficiency in coal mining operations. Our licensing model and ongoing support packages are designed to provide businesses with the flexibility and support they need to implement and maintain this system successfully.



# Hardware Requirements for AI Coal Safety Monitoring Pattaya

AI Coal Safety Monitoring Pattaya relies on a combination of AI-powered cameras and sensors to monitor coal mining operations and ensure safety. These hardware components work in conjunction to provide real-time insights into potential hazards, worker safety, equipment performance, and environmental conditions.

## 1. AI Coal Safety Monitoring Cameras

These cameras are equipped with high-resolution imaging capabilities, wide-angle lenses, and night vision capabilities. They are strategically placed throughout the mining operation to capture footage of the work environment. The cameras are powered by AI algorithms that can detect and identify potential hazards, such as methane gas leaks, roof falls, and equipment malfunctions.

## 2. AI Coal Safety Sensors

These sensors are deployed to monitor various environmental conditions within the mine. They can detect gas leaks, temperature changes, humidity levels, and other factors that could pose a risk to miners' safety. The sensors are equipped with AI algorithms that can analyze data in real-time and trigger alerts when unsafe conditions are detected.

The hardware components of AI Coal Safety Monitoring Pattaya work together to provide a comprehensive monitoring system that enhances safety and efficiency in coal mining operations. By leveraging AI and computer vision, the system can detect potential hazards, monitor workers and equipment, and provide real-time alerts, enabling businesses to take proactive measures to prevent accidents and ensure the well-being of their miners.

## Frequently Asked Questions:

### **How does AI Coal Safety Monitoring Pattaya improve safety in coal mining operations?**

AI Coal Safety Monitoring Pattaya uses AI and computer vision to detect potential hazards, monitor workers and equipment, and provide real-time alerts. This helps businesses identify and mitigate risks before accidents occur.

---

### **What are the benefits of using AI Coal Safety Monitoring Pattaya?**

AI Coal Safety Monitoring Pattaya offers numerous benefits, including improved safety, reduced risks, optimized productivity, and compliance with safety regulations. It helps businesses create a safer and more efficient work environment for their miners.

---

### **How long does it take to implement AI Coal Safety Monitoring Pattaya?**

The implementation timeline typically takes 8-12 weeks. However, the duration may vary depending on the size and complexity of the mining operation.

---

### **What is the cost of AI Coal Safety Monitoring Pattaya?**

The cost of AI Coal Safety Monitoring Pattaya varies depending on the specific requirements of the mining operation. However, as a general estimate, the cost ranges from \$10,000 to \$50,000 per year.

---

### **Do I need to purchase hardware to use AI Coal Safety Monitoring Pattaya?**

Yes, AI Coal Safety Monitoring Pattaya requires the installation of AI-powered cameras and sensors to monitor the mining operation. We offer a range of hardware options to meet your specific needs.

---

# AI Coal Safety Monitoring Pattaya: Project Timeline and Costs

## Project Timeline

### Consultation

1. Duration: 2-4 hours
2. Details: Our experts will discuss your specific safety needs and challenges, provide a detailed overview of the AI Coal Safety Monitoring Pattaya solution, and answer any questions you may have.

### Project Implementation

1. Duration: 8-12 weeks
2. Details: The implementation timeline may vary depending on the size and complexity of the mining operation. The process typically involves site assessment, hardware installation, software configuration, and training of personnel.

## Costs

### Cost Range

The cost of AI Coal Safety Monitoring Pattaya varies depending on the size and complexity of the mining operation, the number of cameras and sensors required, and the subscription plan selected. However, as a general estimate, the cost ranges from \$10,000 to \$50,000 per year.

### Subscription Plans

1. **Standard Subscription**
  - Access to AI Coal Safety Monitoring Pattaya platform
  - 24/7 monitoring and support
  - Regular software updates
2. **Premium Subscription**
  - All features of Standard Subscription
  - Advanced analytics and reporting
  - Customized training and consulting

### Hardware Requirements

Yes, AI Coal Safety Monitoring Pattaya requires the installation of AI-powered cameras and sensors to monitor the mining operation. We offer a range of hardware options to meet your specific needs.

### Hardware Models Available

1. AI Coal Safety Monitoring Camera

- Manufacturer: XYZ Technologies
- Features: High-resolution imaging, wide-angle lens, night vision capabilities, AI-powered object detection

## 2. **AI Coal Safety Sensor**

- Manufacturer: ABC Industries
- Features: Gas leak detection, temperature monitoring, humidity monitoring, AI-powered anomaly detection

## Meet Our Key Players in Project Management

Get to know the experienced leadership driving our project management forward: Sandeep Bharadwaj, a seasoned professional with a rich background in securities trading and technology entrepreneurship, and Stuart Dawsons, our Lead AI Engineer, spearheading innovation in AI solutions. Together, they bring decades of expertise to ensure the success of our projects.



### Stuart Dawsons

#### Lead AI Engineer

Under Stuart Dawsons' leadership, our lead engineer, the company stands as a pioneering force in engineering groundbreaking AI solutions. Stuart brings to the table over a decade of specialized experience in machine learning and advanced AI solutions. His commitment to excellence is evident in our strategic influence across various markets. Navigating global landscapes, our core aim is to deliver inventive AI solutions that drive success internationally. With Stuart's guidance, expertise, and unwavering dedication to engineering excellence, we are well-positioned to continue setting new standards in AI innovation.



### Sandeep Bharadwaj

#### Lead AI Consultant

As our lead AI consultant, Sandeep Bharadwaj brings over 29 years of extensive experience in securities trading and financial services across the UK, India, and Hong Kong. His expertise spans equities, bonds, currencies, and algorithmic trading systems. With leadership roles at DE Shaw, Tradition, and Tower Capital, Sandeep has a proven track record in driving business growth and innovation. His tenure at Tata Consultancy Services and Moody's Analytics further solidifies his proficiency in OTC derivatives and financial analytics. Additionally, as the founder of a technology company specializing in AI, Sandeep is uniquely positioned to guide and empower our team through its journey with our company. Holding an MBA from Manchester Business School and a degree in Mechanical Engineering from Manipal Institute of Technology, Sandeep's strategic insights and technical acumen will be invaluable assets in advancing our AI initiatives.