

# SERVICE GUIDE

DETAILED INFORMATION ABOUT WHAT WE OFFER



[AIMLPROGRAMMING.COM](http://AIMLPROGRAMMING.COM)

**Abstract:** AI-driven drug discovery revolutionizes drug development for Bangkok pharmacies, accelerating identification and development of effective medications. AI algorithms analyze vast data to identify novel drug targets, predict drug efficacy, and tailor treatments to individual patient profiles. This approach reduces drug development time and cost, improves drug efficacy, promotes personalized medicine, minimizes side effects, enhances safety monitoring, and provides a competitive advantage. By embracing AI-driven drug discovery, Bangkok pharmacies contribute to healthcare advancement and improve patient outcomes.

# AI-Driven Drug Discovery for Bangkok Pharmacies

Artificial intelligence (AI) is revolutionizing the drug discovery process, and Bangkok pharmacies are poised to reap the benefits. By leveraging advanced AI algorithms and machine learning techniques, pharmacies can accelerate the identification and development of new and effective medications, leading to significant improvements in patient care and the healthcare industry.

This document will provide a comprehensive overview of AI-driven drug discovery for Bangkok pharmacies. We will showcase the transformative power of AI in drug development, highlighting its ability to:

- Accelerate drug development
- Improve drug efficacy
- Personalize medicine
- Reduce drug side effects
- Enhance drug safety and efficacy monitoring
- Provide a competitive advantage

By embracing AI-driven drug discovery, Bangkok pharmacies can contribute to the advancement of healthcare and improve the lives of patients in Bangkok and beyond.

## SERVICE NAME

AI-Driven Drug Discovery for Bangkok Pharmacies

## INITIAL COST RANGE

\$10,000 to \$50,000

## FEATURES

- Accelerated Drug Development
- Improved Drug Efficacy
- Personalized Medicine
- Reduced Drug Side Effects
- Enhanced Drug Safety and Efficacy Monitoring
- Competitive Advantage

## IMPLEMENTATION TIME

6-8 weeks

## CONSULTATION TIME

1-2 hours

## DIRECT

<https://aimlprogramming.com/services/ai-driven-drug-discovery-for-bangkok-pharmacies/>

## RELATED SUBSCRIPTIONS

- Standard Subscription
- Enterprise Subscription

## HARDWARE REQUIREMENT

- NVIDIA DGX A100
- Google Cloud TPU v3



## AI-Driven Drug Discovery for Bangkok Pharmacies

AI-driven drug discovery is a transformative technology that empowers Bangkok pharmacies to revolutionize their drug development processes. By leveraging advanced artificial intelligence (AI) algorithms and machine learning techniques, pharmacies can accelerate the identification and development of new and effective medications, leading to significant benefits for patients and the healthcare industry.

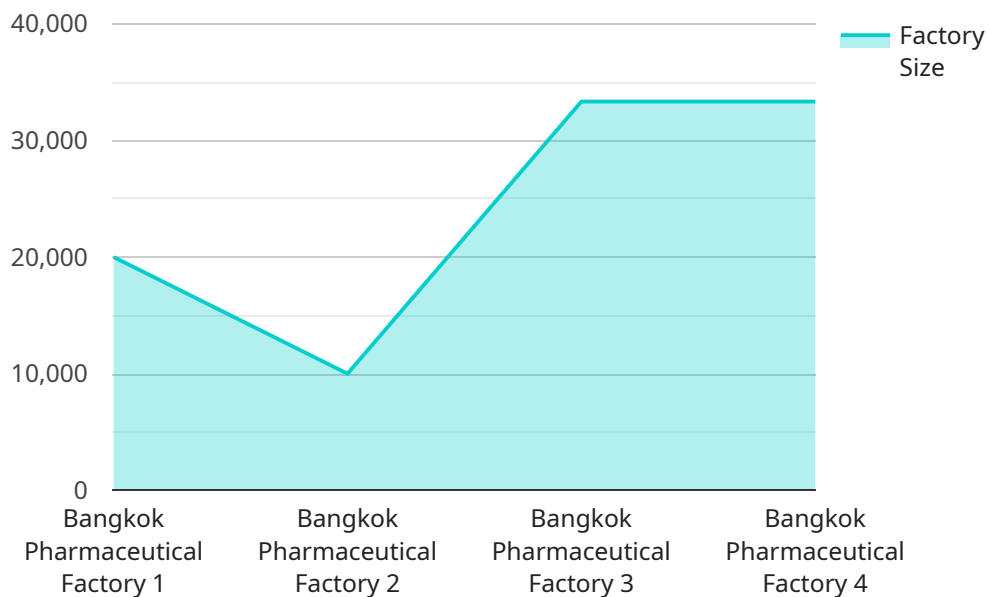
- 1. Accelerated Drug Development:** AI-driven drug discovery significantly reduces the time and cost associated with traditional drug development processes. By automating tasks such as data analysis, target identification, and lead optimization, pharmacies can rapidly identify promising drug candidates and streamline the drug development pipeline.
- 2. Improved Drug Efficacy:** AI algorithms can analyze vast amounts of data to identify novel drug targets and predict drug efficacy. This enables pharmacies to develop drugs that are more effective in treating specific diseases and conditions, leading to better patient outcomes.
- 3. Personalized Medicine:** AI-driven drug discovery supports personalized medicine approaches by tailoring drug treatments to individual patient profiles. By analyzing patient data, AI algorithms can identify genetic markers and other factors that influence drug response, allowing pharmacies to optimize drug selection and dosage for each patient.
- 4. Reduced Drug Side Effects:** AI algorithms can predict potential drug side effects and identify safer drug candidates. This enables pharmacies to develop drugs with fewer adverse reactions, enhancing patient safety and reducing the risk of complications.
- 5. Enhanced Drug Safety and Efficacy Monitoring:** AI-driven drug discovery tools can continuously monitor drug safety and efficacy in real-time. By analyzing patient data and clinical outcomes, pharmacies can proactively identify any adverse events or changes in drug effectiveness, ensuring patient well-being and optimizing treatment strategies.
- 6. Competitive Advantage:** Pharmacies that embrace AI-driven drug discovery gain a competitive advantage by bringing innovative and effective drugs to market faster. This enables them to

differentiate themselves from competitors and establish themselves as leaders in the healthcare industry.

AI-driven drug discovery empowers Bangkok pharmacies to transform the drug development process, accelerate drug discovery, improve drug efficacy, personalize medicine, reduce drug side effects, enhance drug safety and efficacy monitoring, and gain a competitive advantage. By leveraging AI technologies, pharmacies can contribute to the advancement of healthcare and improve the lives of patients in Bangkok and beyond.

# API Payload Example

The payload is a document that provides a comprehensive overview of AI-driven drug discovery for Bangkok pharmacies.



DATA VISUALIZATION OF THE PAYLOADS FOCUS

It showcases the transformative power of AI in drug development, highlighting its ability to accelerate drug development, improve drug efficacy, personalize medicine, reduce drug side effects, enhance drug safety and efficacy monitoring, and provide a competitive advantage.

By embracing AI-driven drug discovery, Bangkok pharmacies can contribute to the advancement of healthcare and improve the lives of patients in Bangkok and beyond. The document provides a comprehensive overview of the topic, making it a valuable resource for anyone interested in learning more about AI-driven drug discovery.

```
▼ [
  ▼ {
    "project_name": "AI-Driven Drug Discovery for Bangkok Pharmacies",
    ▼ "data": {
      ▼ "factories_and_plants": {
        "factory_name": "Bangkok Pharmaceutical Factory",
        "factory_location": "Bangkok, Thailand",
        "factory_size": "100,000 square meters",
        "factory_capacity": "100 million units per year",
        ▼ "factory_equipment": [
          "HPLC",
          "GC-MS",
          "NMR",
          "X-ray crystallography"
        ],
      },
    },
  },
],
```

```
    ]
  }
}
]

  ▼ "factory_processes": [
    "Drug synthesis",
    "Drug formulation",
    "Drug packaging"
  ]
}
```

# AI-Driven Drug Discovery for Bangkok Pharmacies: Licensing Options

## Standard Subscription

The Standard Subscription provides access to the AI-driven drug discovery platform, as well as ongoing support and maintenance. This subscription is ideal for pharmacies that are new to AI-driven drug discovery or that have limited resources.

## Enterprise Subscription

The Enterprise Subscription includes all the features of the Standard Subscription, plus additional features such as access to a dedicated support team and priority access to new features. This subscription is ideal for pharmacies that are experienced with AI-driven drug discovery or that have complex needs.

## Pricing

The cost of a subscription to the AI-driven drug discovery platform varies depending on the size and complexity of the pharmacy's operations, as well as the specific features and services that are required. However, most pharmacies can expect to pay between \$10,000 and \$50,000 per year for a subscription.

## Benefits of AI-Driven Drug Discovery

1. Accelerated drug development
2. Improved drug efficacy
3. Personalized medicine
4. Reduced drug side effects
5. Enhanced drug safety and efficacy monitoring
6. Competitive advantage

## How to Get Started

To get started with AI-driven drug discovery, contact our team of experts. We will work with you to assess your pharmacy's needs and develop a customized implementation plan. We will also provide training on how to use the AI-driven drug discovery platform.

# Hardware Requirements for AI-Driven Drug Discovery for Bangkok Pharmacies

AI-driven drug discovery requires powerful hardware systems to run the complex algorithms and process vast amounts of data involved in the drug development process. The following hardware models are recommended for this service:

## 1. NVIDIA DGX A100

The NVIDIA DGX A100 is a powerful AI system that is ideal for drug discovery. It features 8 NVIDIA A100 GPUs, 160GB of memory, and 2TB of storage. The A100 GPUs are designed specifically for AI workloads and provide the necessary computational power to run the complex AI algorithms used in drug discovery.

## 2. Google Cloud TPU v3

The Google Cloud TPU v3 is a cloud-based AI system that is also ideal for drug discovery. It features 8 TPU v3 chips, 128GB of memory, and 1TB of storage. The TPU v3 chips are designed specifically for AI workloads and provide the necessary computational power to run the complex AI algorithms used in drug discovery.

These hardware systems provide the necessary computational power and memory to run the complex AI algorithms used in drug discovery. They enable pharmacies to accelerate the identification and development of new and effective medications, leading to significant benefits for patients and the healthcare industry.



## Frequently Asked Questions:

### What are the benefits of using AI-driven drug discovery?

AI-driven drug discovery can provide a number of benefits for Bangkok pharmacies, including accelerated drug development, improved drug efficacy, personalized medicine, reduced drug side effects, enhanced drug safety and efficacy monitoring, and a competitive advantage.

---

### How much does AI-driven drug discovery cost?

The cost of AI-driven drug discovery for Bangkok pharmacies varies depending on the size and complexity of the pharmacy's operations, as well as the specific features and services that are required. However, most pharmacies can expect to pay between \$10,000 and \$50,000 per year for a subscription to the AI-driven drug discovery platform.

---

### How long does it take to implement AI-driven drug discovery?

The time to implement AI-driven drug discovery for Bangkok pharmacies varies depending on the size and complexity of the pharmacy's operations. However, most pharmacies can expect to be up and running within 6-8 weeks.

---

### What hardware is required for AI-driven drug discovery?

AI-driven drug discovery requires a powerful AI system, such as the NVIDIA DGX A100 or the Google Cloud TPU v3. These systems feature multiple GPUs or TPUs, which are necessary for running the complex AI algorithms that are used in drug discovery.

---

### What is the difference between the Standard Subscription and the Enterprise Subscription?

The Standard Subscription includes access to the AI-driven drug discovery platform, as well as ongoing support and maintenance. The Enterprise Subscription includes all the features of the Standard Subscription, plus additional features such as access to a dedicated support team and priority access to new features.

---

# Project Timeline and Costs for AI-Driven Drug Discovery

## Timeline

### 1. Consultation Period: 1-2 hours

During this period, our experts will assess your pharmacy's needs and develop a customized implementation plan. We will also provide training on how to use the AI-driven drug discovery platform.

### 2. Implementation: 6-8 weeks

Most pharmacies can expect to be up and running within 6-8 weeks. The time to implement may vary depending on the size and complexity of the pharmacy's operations.

## Costs

The cost of AI-driven drug discovery for Bangkok pharmacies varies depending on the following factors:

- Size and complexity of the pharmacy's operations
- Specific features and services required

However, most pharmacies can expect to pay between \$10,000 and \$50,000 per year for a subscription to the AI-driven drug discovery platform.

## Subscription Options

There are two subscription options available:

- **Standard Subscription:** Includes access to the AI-driven drug discovery platform, as well as ongoing support and maintenance.
- **Enterprise Subscription:** Includes all the features of the Standard Subscription, plus additional features such as access to a dedicated support team and priority access to new features.

## Meet Our Key Players in Project Management

Get to know the experienced leadership driving our project management forward: Sandeep Bharadwaj, a seasoned professional with a rich background in securities trading and technology entrepreneurship, and Stuart Dawsons, our Lead AI Engineer, spearheading innovation in AI solutions. Together, they bring decades of expertise to ensure the success of our projects.



### Stuart Dawsons

#### Lead AI Engineer

Under Stuart Dawsons' leadership, our lead engineer, the company stands as a pioneering force in engineering groundbreaking AI solutions. Stuart brings to the table over a decade of specialized experience in machine learning and advanced AI solutions. His commitment to excellence is evident in our strategic influence across various markets. Navigating global landscapes, our core aim is to deliver inventive AI solutions that drive success internationally. With Stuart's guidance, expertise, and unwavering dedication to engineering excellence, we are well-positioned to continue setting new standards in AI innovation.



### Sandeep Bharadwaj

#### Lead AI Consultant

As our lead AI consultant, Sandeep Bharadwaj brings over 29 years of extensive experience in securities trading and financial services across the UK, India, and Hong Kong. His expertise spans equities, bonds, currencies, and algorithmic trading systems. With leadership roles at DE Shaw, Tradition, and Tower Capital, Sandeep has a proven track record in driving business growth and innovation. His tenure at Tata Consultancy Services and Moody's Analytics further solidifies his proficiency in OTC derivatives and financial analytics. Additionally, as the founder of a technology company specializing in AI, Sandeep is uniquely positioned to guide and empower our team through its journey with our company. Holding an MBA from Manchester Business School and a degree in Mechanical Engineering from Manipal Institute of Technology, Sandeep's strategic insights and technical acumen will be invaluable assets in advancing our AI initiatives.