

SERVICE GUIDE

DETAILED INFORMATION ABOUT WHAT WE OFFER



[AIMLPROGRAMMING.COM](https://aimlprogramming.com)

Abstract: AI Electrical Safety Monitoring Chachoengsao is an innovative service that utilizes AI and machine learning to enhance electrical safety in businesses. It enables real-time monitoring, predictive maintenance, remote monitoring, compliance reporting, and insurance risk management. By leveraging advanced algorithms, the service proactively identifies electrical hazards, minimizes downtime, reduces maintenance costs, and ensures the safety and reliability of electrical systems. AI Electrical Safety Monitoring Chachoengsao provides businesses with a comprehensive and pragmatic solution to improve electrical safety, reduce risks, and optimize their electrical infrastructure.

AI Electrical Safety Monitoring Chachoengsao

AI Electrical Safety Monitoring Chachoengsao is an advanced technology designed to provide businesses with unparalleled electrical safety monitoring and management capabilities. This document aims to showcase the transformative benefits of AI Electrical Safety Monitoring Chachoengsao, highlighting its ability to enhance safety, reduce risks, and optimize electrical systems.

Through the integration of advanced algorithms and machine learning techniques, AI Electrical Safety Monitoring Chachoengsao empowers businesses to:

- **Predictively identify electrical hazards and anomalies:** By analyzing historical data and identifying patterns, AI Electrical Safety Monitoring Chachoengsao enables businesses to proactively address potential electrical failures and hazards before they occur.
- **Monitor electrical systems in real-time:** AI Electrical Safety Monitoring Chachoengsao provides real-time monitoring of electrical systems, allowing businesses to detect and respond to electrical hazards and anomalies as they occur.
- **Monitor electrical systems remotely:** AI Electrical Safety Monitoring Chachoengsao can be deployed remotely, enabling businesses to monitor and manage electrical systems from anywhere with an internet connection.
- **Comply with electrical safety regulations and standards:** AI Electrical Safety Monitoring Chachoengsao assists businesses in complying with electrical safety regulations and standards, providing detailed reports and documentation to demonstrate their commitment to electrical safety.
- **Manage electrical risks and reduce insurance premiums:** AI Electrical Safety Monitoring Chachoengsao helps businesses manage electrical risks and reduce insurance

SERVICE NAME

AI Electrical Safety Monitoring Chachoengsao

INITIAL COST RANGE

\$1,000 to \$5,000

FEATURES

- Predictive Maintenance
- Real-Time Monitoring
- Remote Monitoring
- Compliance and Reporting
- Insurance and Risk Management

IMPLEMENTATION TIME

2-4 weeks

CONSULTATION TIME

1-2 hours

DIRECT

<https://aimlprogramming.com/services/ai-electrical-safety-monitoring-chachoengsao/>

RELATED SUBSCRIPTIONS

- Ongoing support license
- Advanced analytics license
- Enterprise license

HARDWARE REQUIREMENT

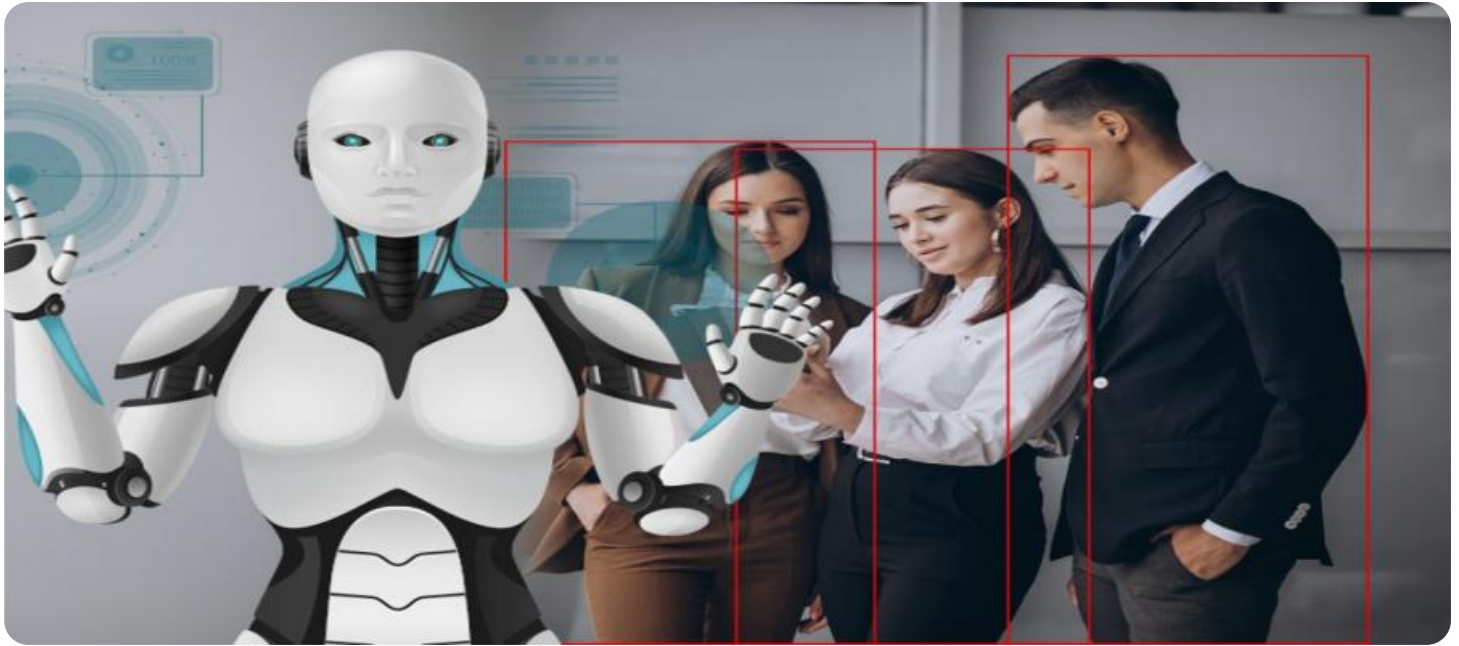
Yes

premiums by proactively identifying and mitigating electrical hazards.

As a leading provider of AI Electrical Safety Monitoring Chachoengsao, we are committed to delivering pragmatic solutions that address the unique electrical safety challenges faced by businesses. Our team of experienced engineers and data scientists possesses a deep understanding of the latest AI and machine learning technologies, ensuring that our solutions are tailored to meet the specific needs of each client.

This document will delve into the technical details of AI Electrical Safety Monitoring Chachoengsao, showcasing its advanced capabilities and demonstrating how it can transform electrical safety management practices. We will provide real-world examples and case studies to illustrate the practical benefits and value that AI Electrical Safety Monitoring Chachoengsao can bring to your organization.

By partnering with us, you can leverage our expertise in AI Electrical Safety Monitoring Chachoengsao to enhance your electrical safety practices, protect your assets and employees, and ensure the reliable and efficient operation of your electrical infrastructure.



AI Electrical Safety Monitoring Chachoengsao

AI Electrical Safety Monitoring Chachoengsao is a powerful technology that enables businesses to automatically detect and identify electrical hazards and anomalies in real-time. By leveraging advanced algorithms and machine learning techniques, AI Electrical Safety Monitoring Chachoengsao offers several key benefits and applications for businesses:

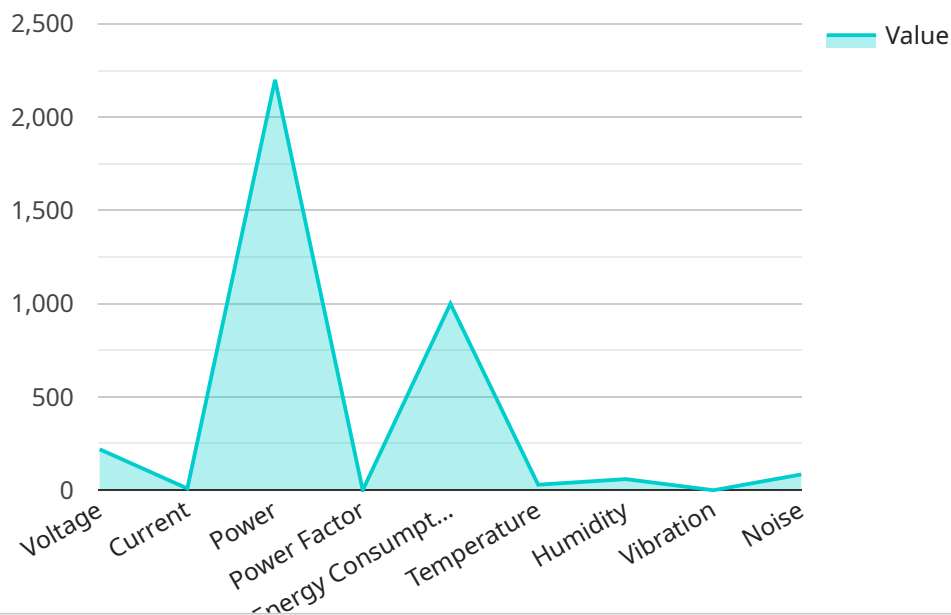
- 1. Predictive Maintenance:** AI Electrical Safety Monitoring Chachoengsao can analyze historical data and identify patterns to predict potential electrical failures or hazards. By proactively identifying and addressing issues before they occur, businesses can minimize downtime, reduce maintenance costs, and ensure the safety and reliability of their electrical systems.
- 2. Real-Time Monitoring:** AI Electrical Safety Monitoring Chachoengsao provides real-time monitoring of electrical systems, enabling businesses to detect and respond to electrical hazards and anomalies as they occur. This allows businesses to quickly isolate affected areas, prevent accidents, and minimize the risk of electrical fires or explosions.
- 3. Remote Monitoring:** AI Electrical Safety Monitoring Chachoengsao can be deployed remotely, allowing businesses to monitor and manage electrical systems from anywhere with an internet connection. This enables businesses to centralize their monitoring operations, reduce response times, and improve overall electrical safety.
- 4. Compliance and Reporting:** AI Electrical Safety Monitoring Chachoengsao can help businesses comply with electrical safety regulations and standards. By providing detailed reports and documentation, businesses can demonstrate their commitment to electrical safety and meet regulatory requirements.
- 5. Insurance and Risk Management:** AI Electrical Safety Monitoring Chachoengsao can assist businesses in managing electrical risks and reducing insurance premiums. By proactively identifying and mitigating electrical hazards, businesses can lower their risk of electrical accidents and improve their overall safety profile.

AI Electrical Safety Monitoring Chachoengsao offers businesses a comprehensive solution for electrical safety management, enabling them to improve safety, reduce risks, and optimize their electrical

systems. By leveraging advanced AI and machine learning technologies, businesses can enhance their electrical safety practices, protect their assets and employees, and ensure the reliable and efficient operation of their electrical infrastructure.

API Payload Example

The payload describes an AI-powered electrical safety monitoring service designed to enhance safety and optimize electrical systems for businesses.



DATA VISUALIZATION OF THE PAYLOADS FOCUS

It leverages advanced algorithms and machine learning to proactively identify electrical hazards, monitor systems in real-time, and facilitate remote management. By analyzing historical data and identifying patterns, the service empowers businesses to address potential electrical failures before they occur. It also assists in complying with electrical safety regulations, managing electrical risks, and reducing insurance premiums. The payload highlights the service's ability to transform electrical safety management practices, protect assets and employees, and ensure the reliable operation of electrical infrastructure. By partnering with the provider, businesses can leverage their expertise in AI Electrical Safety Monitoring to enhance their electrical safety practices and optimize their electrical systems.

```
▼ [
  ▼ {
    "device_name": "AI Electrical Safety Monitoring Chachoengsao",
    "sensor_id": "ESMC12345",
    ▼ "data": {
      "sensor_type": "Electrical Safety Monitoring",
      "location": "Factories and Plants",
      ▼ "electrical_parameters": {
        "voltage": 220,
        "current": 10,
        "power": 2200,
        "power_factor": 0.9,
        "energy_consumption": 1000,
        "temperature": 30,
```

```
    "humidity": 60,  
    "vibration": 0.5,  
    "noise": 85  
  },  
  "safety_parameters": {  
    "ground_fault_detection": true,  
    "arc_fault_detection": true,  
    "overcurrent_protection": true,  
    "overvoltage_protection": true,  
    "undercurrent_protection": true,  
    "undervoltage_protection": true,  
    "insulation_resistance": 100,  
    "leakage_current": 0.1,  
    "earth_resistance": 10,  
    "polarization_index": 2,  
    "dielectric_absorption_ratio": 1.5  
  },  
  "maintenance_parameters": {  
    "last_maintenance_date": "2023-03-08",  
    "next_maintenance_date": "2024-03-08",  
    "maintenance_interval": 12,  
    "maintenance_status": "Good"  
  }  
}  
]  
]
```

AI Electrical Safety Monitoring Chachoengsao Licensing

AI Electrical Safety Monitoring Chachoengsao is a powerful tool that can help businesses improve their electrical safety and reduce their risks. To use AI Electrical Safety Monitoring Chachoengsao, you will need to purchase a license. There are three different types of licenses available:

1. **Ongoing support license:** This license includes access to our team of experts who can help you with any questions or issues you may have with AI Electrical Safety Monitoring Chachoengsao. This license also includes access to our online knowledge base and support forum.
2. **Advanced analytics license:** This license includes access to our advanced analytics features, which can help you identify trends and patterns in your electrical data. This information can help you make better decisions about how to improve your electrical safety.
3. **Enterprise license:** This license includes access to all of the features of the ongoing support and advanced analytics licenses, plus additional features such as custom reporting and integration with your other business systems.

The cost of a license will vary depending on the type of license you purchase and the size of your business. To get a quote, please contact our sales team.

How the Licenses Work

Once you have purchased a license, you will be able to access AI Electrical Safety Monitoring Chachoengsao through our online portal. You will need to create an account and provide your license key. Once you have logged in, you will be able to access all of the features of AI Electrical Safety Monitoring Chachoengsao that are included in your license.

Your license will expire after one year. You will need to renew your license to continue using AI Electrical Safety Monitoring Chachoengsao.

Benefits of Using AI Electrical Safety Monitoring Chachoengsao

There are many benefits to using AI Electrical Safety Monitoring Chachoengsao, including:

- Improved electrical safety
- Reduced risks
- Optimized electrical systems
- Lower insurance premiums

If you are looking for a way to improve your electrical safety and reduce your risks, then AI Electrical Safety Monitoring Chachoengsao is the perfect solution for you.

Frequently Asked Questions:

What types of electrical hazards can AI Electrical Safety Monitoring Chachoengsao detect?

AI Electrical Safety Monitoring Chachoengsao can detect a wide range of electrical hazards, including overloads, short circuits, ground faults, and arc faults.

How does AI Electrical Safety Monitoring Chachoengsao help businesses comply with electrical safety regulations?

AI Electrical Safety Monitoring Chachoengsao provides detailed reports and documentation that can be used to demonstrate compliance with electrical safety regulations and standards.

What are the benefits of using AI Electrical Safety Monitoring Chachoengsao?

AI Electrical Safety Monitoring Chachoengsao offers several benefits, including improved safety, reduced risks, optimized electrical systems, and lower insurance premiums.

How can I get started with AI Electrical Safety Monitoring Chachoengsao?

To get started with AI Electrical Safety Monitoring Chachoengsao, please contact our sales team to schedule a consultation.

What is the cost of AI Electrical Safety Monitoring Chachoengsao?

The cost of AI Electrical Safety Monitoring Chachoengsao varies depending on the size and complexity of the electrical system being monitored, as well as the level of support and customization required. However, as a general estimate, the cost can range from \$1,000 to \$5,000 per month.

Project Timeline and Costs for AI Electrical Safety Monitoring Chachoengsao

Our AI Electrical Safety Monitoring Chachoengsao service provides businesses with a comprehensive solution for electrical safety management, enabling them to improve safety, reduce risks, and optimize their electrical systems.

Timeline

- 1. Consultation (1-2 hours):** Our team will discuss your specific electrical safety needs and requirements, and provide recommendations on how AI Electrical Safety Monitoring Chachoengsao can be customized to meet your business objectives.
- 2. Implementation (2-4 weeks):** The implementation time may vary depending on the size and complexity of the electrical system being monitored. Our team will work with you to schedule the implementation and minimize any disruption to your business operations.

Costs

The cost of AI Electrical Safety Monitoring Chachoengsao varies depending on the size and complexity of the electrical system being monitored, as well as the level of support and customization required. However, as a general estimate, the cost can range from \$1,000 to \$5,000 per month.

Our pricing includes:

- Hardware installation and maintenance
- Software licensing and updates
- 24/7 monitoring and support
- Customized reporting and analytics

We offer flexible pricing options to meet your specific needs and budget. Contact our sales team today to schedule a consultation and get a customized quote.

Meet Our Key Players in Project Management

Get to know the experienced leadership driving our project management forward: Sandeep Bharadwaj, a seasoned professional with a rich background in securities trading and technology entrepreneurship, and Stuart Dawsons, our Lead AI Engineer, spearheading innovation in AI solutions. Together, they bring decades of expertise to ensure the success of our projects.



Stuart Dawsons

Lead AI Engineer

Under Stuart Dawsons' leadership, our lead engineer, the company stands as a pioneering force in engineering groundbreaking AI solutions. Stuart brings to the table over a decade of specialized experience in machine learning and advanced AI solutions. His commitment to excellence is evident in our strategic influence across various markets. Navigating global landscapes, our core aim is to deliver inventive AI solutions that drive success internationally. With Stuart's guidance, expertise, and unwavering dedication to engineering excellence, we are well-positioned to continue setting new standards in AI innovation.



Sandeep Bharadwaj

Lead AI Consultant

As our lead AI consultant, Sandeep Bharadwaj brings over 29 years of extensive experience in securities trading and financial services across the UK, India, and Hong Kong. His expertise spans equities, bonds, currencies, and algorithmic trading systems. With leadership roles at DE Shaw, Tradition, and Tower Capital, Sandeep has a proven track record in driving business growth and innovation. His tenure at Tata Consultancy Services and Moody's Analytics further solidifies his proficiency in OTC derivatives and financial analytics. Additionally, as the founder of a technology company specializing in AI, Sandeep is uniquely positioned to guide and empower our team through its journey with our company. Holding an MBA from Manchester Business School and a degree in Mechanical Engineering from Manipal Institute of Technology, Sandeep's strategic insights and technical acumen will be invaluable assets in advancing our AI initiatives.