

SERVICE GUIDE

DETAILED INFORMATION ABOUT WHAT WE OFFER



AIMLPROGRAMMING.COM

Abstract: AI Tire Pressure Optimization Chonburi is an innovative solution that empowers businesses to optimize tire pressure in real-time, leading to tangible benefits. By leveraging AI technology, this service automates tire pressure monitoring and adjustment, resulting in improved fuel efficiency, extended tire life, enhanced safety, reduced maintenance costs, and increased productivity. Additionally, integration with fleet management systems provides real-time insights and enables proactive maintenance, optimizing vehicle performance and reducing operating expenses.

AI Tire Pressure Optimization Chonburi

AI Tire Pressure Optimization Chonburi is a groundbreaking technology designed to revolutionize tire management for businesses. This comprehensive document will provide an in-depth exploration of this innovative solution, showcasing its capabilities, benefits, and applications.

Through real-time monitoring and automated adjustments, AI Tire Pressure Optimization Chonburi empowers businesses to optimize vehicle performance, reduce operating expenses, and enhance overall business operations. This document will demonstrate the practical applications and tangible benefits of this technology, enabling businesses to gain a competitive edge and achieve operational excellence.

SERVICE NAME

AI Tire Pressure Optimization Chonburi

INITIAL COST RANGE

\$1,000 to \$5,000

FEATURES

- Improved Fuel Efficiency
- Extended Tire Life
- Enhanced Safety
- Reduced Maintenance Costs
- Increased Productivity
- Fleet Management

IMPLEMENTATION TIME

4-6 weeks

CONSULTATION TIME

1-2 hours

DIRECT

<https://aimlprogramming.com/services/ai-tire-pressure-optimization-chonburi/>

RELATED SUBSCRIPTIONS

- Basic Subscription
- Advanced Subscription
- Enterprise Subscription

HARDWARE REQUIREMENT

- Continental ContiPressureCheck
- Michelin PressureCheck
- TireGuard TPMS



AI Tire Pressure Optimization Chonburi

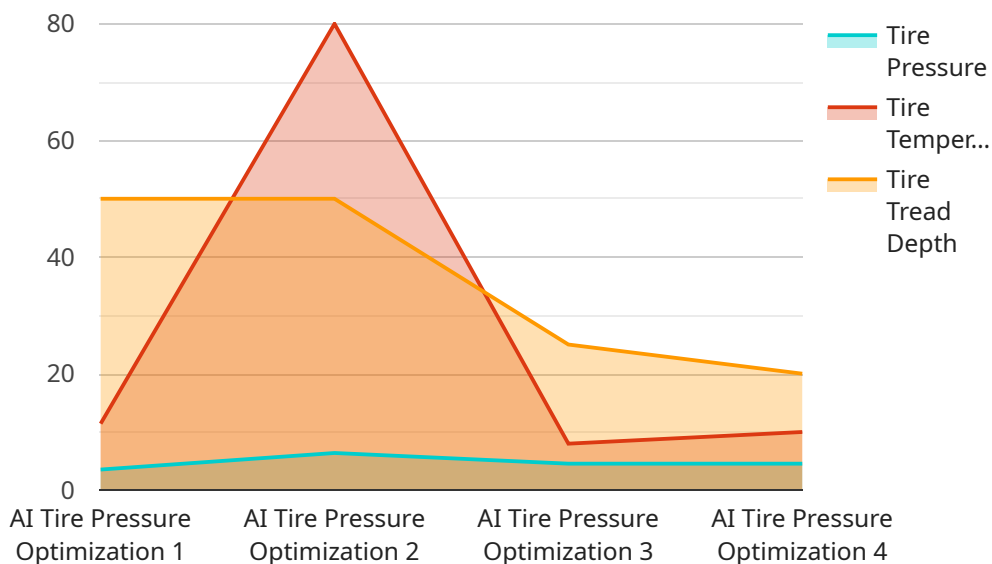
AI Tire Pressure Optimization Chonburi is a powerful technology that enables businesses to automatically monitor and adjust tire pressure in real-time, providing several key benefits and applications for businesses:

1. **Improved Fuel Efficiency:** By maintaining optimal tire pressure, businesses can reduce rolling resistance and improve fuel efficiency, leading to cost savings and reduced environmental impact.
2. **Extended Tire Life:** Proper tire pressure distribution ensures even wear and tear, extending the lifespan of tires and reducing replacement costs.
3. **Enhanced Safety:** Optimal tire pressure improves handling, braking, and stability, reducing the risk of accidents and enhancing overall vehicle safety.
4. **Reduced Maintenance Costs:** By monitoring tire pressure remotely, businesses can identify and address issues early on, preventing costly repairs and downtime.
5. **Increased Productivity:** Automated tire pressure monitoring and adjustment eliminates manual labor, freeing up staff for other tasks and improving operational efficiency.
6. **Fleet Management:** AI Tire Pressure Optimization Chonburi can be integrated with fleet management systems, providing real-time insights into tire pressure across multiple vehicles, enabling proactive maintenance and improved fleet performance.

AI Tire Pressure Optimization Chonburi offers businesses a range of benefits, including improved fuel efficiency, extended tire life, enhanced safety, reduced maintenance costs, increased productivity, and improved fleet management, enabling them to optimize vehicle performance, reduce operating expenses, and enhance overall business operations.

API Payload Example

The payload provided pertains to "AI Tire Pressure Optimization Chonburi," an innovative technology designed to revolutionize tire management practices for businesses.



DATA VISUALIZATION OF THE PAYLOADS FOCUS

This comprehensive document offers an in-depth examination of the solution, highlighting its capabilities, advantages, and practical applications.

Through real-time monitoring and automated adjustments, AI Tire Pressure Optimization Chonburi empowers businesses to optimize vehicle performance, reduce operating expenses, and enhance overall business operations. The document showcases the practical applications and tangible benefits of this technology, enabling businesses to gain a competitive edge and achieve operational excellence.

```
▼ [
  ▼ {
    "device_name": "AI Tire Pressure Optimization System",
    "sensor_id": "ATPOS12345",
    ▼ "data": {
      "sensor_type": "AI Tire Pressure Optimization",
      "location": "Factory",
      "tire_pressure": 32,
      "tire_temperature": 80,
      "tire_tread_depth": 8,
      "tire_wear_indicator": "OK",
      "industry": "Automotive",
      "application": "Tire Pressure Monitoring",
      "calibration_date": "2023-03-08",
      "calibration_status": "Valid"
    }
  }
]
```

}

}

]

AI Tire Pressure Optimization Chonburi Licensing

AI Tire Pressure Optimization Chonburi is a powerful technology that enables businesses to automatically monitor and adjust tire pressure in real-time, providing several key benefits and applications for businesses.

To access and utilize the full capabilities of AI Tire Pressure Optimization Chonburi, businesses require a valid license. Our company offers three subscription tiers to meet the diverse needs of our customers:

Basic Subscription

- Includes access to the AI Tire Pressure Optimization platform
- Tire pressure monitoring
- Basic analytics

Advanced Subscription

- Includes all features of the Basic Subscription
- Advanced analytics
- Predictive maintenance
- Remote tire pressure adjustment

Enterprise Subscription

- Includes all features of the Advanced Subscription
- Dedicated support
- Custom reporting
- Integration with existing systems

The cost of a license varies depending on the size and complexity of your fleet, the specific features and services you require, and the length of your subscription. However, as a general guide, you can expect to pay between \$1,000 and \$5,000 per vehicle, per year.

In addition to the license fee, we also offer ongoing support and improvement packages to ensure that your system is always operating at peak performance. These packages include:

- Software updates
- Technical support
- Hardware maintenance
- Training

The cost of these packages varies depending on the specific services you require. However, we believe that they are a valuable investment that will help you maximize the benefits of AI Tire Pressure Optimization Chonburi.

To learn more about our licensing options and ongoing support packages, please contact us today.

Hardware Requirements for AI Tire Pressure Optimization Chonburi

AI Tire Pressure Optimization Chonburi requires the use of specialized hardware to monitor and adjust tire pressure in real-time. This hardware includes:

1. **Tire Pressure Sensors:** These sensors are installed on each tire and measure tire pressure, temperature, and tread depth.
2. **Tire Pressure Controllers:** These controllers receive data from the sensors and adjust tire pressure as needed using an onboard compressor or nitrogen generator.

The following are some of the most popular hardware models available:

- **Continental ContiPressureCheck:** A comprehensive tire pressure monitoring system that provides real-time data on tire pressure, temperature, and tread depth.
- **Michelin PressureCheck:** A wireless tire pressure monitoring system that uses Bluetooth technology to transmit data to a receiver in the vehicle.
- **TireGuard TPMS:** A TPMS (Tire Pressure Monitoring System) that uses sensors and a display unit to monitor tire pressure and alert drivers to any issues.

The hardware is essential for the effective operation of AI Tire Pressure Optimization Chonburi. By monitoring and adjusting tire pressure in real-time, businesses can achieve the following benefits:

- Improved fuel efficiency
- Extended tire life
- Enhanced safety
- Reduced maintenance costs
- Increased productivity
- Improved fleet management

Frequently Asked Questions:

What are the benefits of using AI Tire Pressure Optimization Chonburi?

AI Tire Pressure Optimization Chonburi offers a range of benefits, including improved fuel efficiency, extended tire life, enhanced safety, reduced maintenance costs, increased productivity, and improved fleet management.

How does AI Tire Pressure Optimization Chonburi work?

AI Tire Pressure Optimization Chonburi uses a combination of sensors, controllers, and AI algorithms to monitor and adjust tire pressure in real-time. The system collects data from each tire, including pressure, temperature, and tread depth. This data is then analyzed by the AI algorithms, which make adjustments to the tire pressure as needed.

What types of vehicles can AI Tire Pressure Optimization Chonburi be used on?

AI Tire Pressure Optimization Chonburi can be used on a wide range of vehicles, including cars, trucks, buses, and trailers.

How much does AI Tire Pressure Optimization Chonburi cost?

The cost of AI Tire Pressure Optimization Chonburi varies depending on the size and complexity of your fleet, the specific features and services you require, and the length of your subscription. However, as a general guide, you can expect to pay between \$1,000 and \$5,000 per vehicle, per year.

How can I get started with AI Tire Pressure Optimization Chonburi?

To get started with AI Tire Pressure Optimization Chonburi, please contact us for a consultation. We will discuss your specific needs and goals, and provide you with a tailored solution that meets your requirements.

AI Tire Pressure Optimization Chonburi: Project Timeline and Costs

Timeline

1. **Consultation:** 1-2 hours
2. **Implementation:** 4-6 weeks

Consultation

During the consultation, we will discuss your specific needs and goals, and provide you with a tailored solution that meets your requirements.

Implementation

The implementation time may vary depending on the size and complexity of your fleet and the specific requirements of your business. The following steps are typically involved:

1. Installation of tire pressure sensors and controllers
2. Configuration of the AI Tire Pressure Optimization platform
3. Training of your staff on the system
4. Ongoing monitoring and support

Costs

The cost of AI Tire Pressure Optimization Chonburi varies depending on the size and complexity of your fleet, the specific features and services you require, and the length of your subscription. However, as a general guide, you can expect to pay between \$1,000 and \$5,000 per vehicle, per year.

The following factors can affect the cost:

- Number of vehicles in your fleet
- Type of vehicles (cars, trucks, buses, etc.)
- Features and services required (e.g., basic subscription, advanced subscription, enterprise subscription)
- Length of subscription

We recommend contacting us for a consultation to get a more accurate estimate of the cost for your specific needs.

Meet Our Key Players in Project Management

Get to know the experienced leadership driving our project management forward: Sandeep Bharadwaj, a seasoned professional with a rich background in securities trading and technology entrepreneurship, and Stuart Dawsons, our Lead AI Engineer, spearheading innovation in AI solutions. Together, they bring decades of expertise to ensure the success of our projects.



Stuart Dawsons

Lead AI Engineer

Under Stuart Dawsons' leadership, our lead engineer, the company stands as a pioneering force in engineering groundbreaking AI solutions. Stuart brings to the table over a decade of specialized experience in machine learning and advanced AI solutions. His commitment to excellence is evident in our strategic influence across various markets. Navigating global landscapes, our core aim is to deliver inventive AI solutions that drive success internationally. With Stuart's guidance, expertise, and unwavering dedication to engineering excellence, we are well-positioned to continue setting new standards in AI innovation.



Sandeep Bharadwaj

Lead AI Consultant

As our lead AI consultant, Sandeep Bharadwaj brings over 29 years of extensive experience in securities trading and financial services across the UK, India, and Hong Kong. His expertise spans equities, bonds, currencies, and algorithmic trading systems. With leadership roles at DE Shaw, Tradition, and Tower Capital, Sandeep has a proven track record in driving business growth and innovation. His tenure at Tata Consultancy Services and Moody's Analytics further solidifies his proficiency in OTC derivatives and financial analytics. Additionally, as the founder of a technology company specializing in AI, Sandeep is uniquely positioned to guide and empower our team through its journey with our company. Holding an MBA from Manchester Business School and a degree in Mechanical Engineering from Manipal Institute of Technology, Sandeep's strategic insights and technical acumen will be invaluable assets in advancing our AI initiatives.