

SERVICE GUIDE

DETAILED INFORMATION ABOUT WHAT WE OFFER



[AIMLPROGRAMMING.COM](https://aimlprogramming.com)

Abstract: Ayutthaya Cement Factory Remote Monitoring and Control empowers businesses with pragmatic solutions for remote monitoring and control of cement production processes.

Through advanced sensors, data analytics, and cloud technologies, it provides real-time visibility into key performance indicators, enabling prompt issue identification and resolution.

Remote control capabilities allow for efficient process adjustments, while predictive maintenance optimizes equipment performance and reduces downtime. Energy optimization insights minimize operating costs and enhance sustainability. Improved safety is achieved by reducing the need for on-site personnel. Ayutthaya Cement Factory Remote Monitoring and Control offers a comprehensive solution for enhanced operational efficiency, cost reduction, and reliable cement production.

Ayutthaya Cement Factory Remote Monitoring and Control

Ayutthaya Cement Factory Remote Monitoring and Control is a comprehensive solution that empowers businesses to remotely monitor and control their cement production processes. This document aims to showcase the capabilities, skills, and expertise of our company in providing pragmatic solutions to challenges in the field of remote monitoring and control.

This introduction will provide an overview of the purpose and scope of this document. The subsequent sections will delve into the technical details, benefits, and applications of Ayutthaya Cement Factory Remote Monitoring and Control. By leveraging advanced technologies and our team's deep understanding of the industry, we strive to provide tailored solutions that meet the specific needs of cement producers.

SERVICE NAME

Ayutthaya Cement Factory Remote Monitoring and Control

INITIAL COST RANGE

\$10,000 to \$50,000

FEATURES

- Real-Time Monitoring
- Remote Control
- Predictive Maintenance
- Energy Optimization
- Improved Safety

IMPLEMENTATION TIME

3-4 weeks

CONSULTATION TIME

1-2 hours

DIRECT

<https://aimlprogramming.com/services/ayutthaya-cement-factory-remote-monitoring-and-control/>

RELATED SUBSCRIPTIONS

- Basic Subscription
- Standard Subscription
- Premium Subscription

HARDWARE REQUIREMENT

- Sensor A
- Sensor B
- Sensor C
- PLC
- Gateway



Ayutthaya Cement Factory Remote Monitoring and Control

Ayutthaya Cement Factory Remote Monitoring and Control is a powerful tool that enables businesses to remotely monitor and control their cement production processes. By leveraging advanced sensors, data analytics, and cloud-based technologies, this system offers several key benefits and applications for businesses:

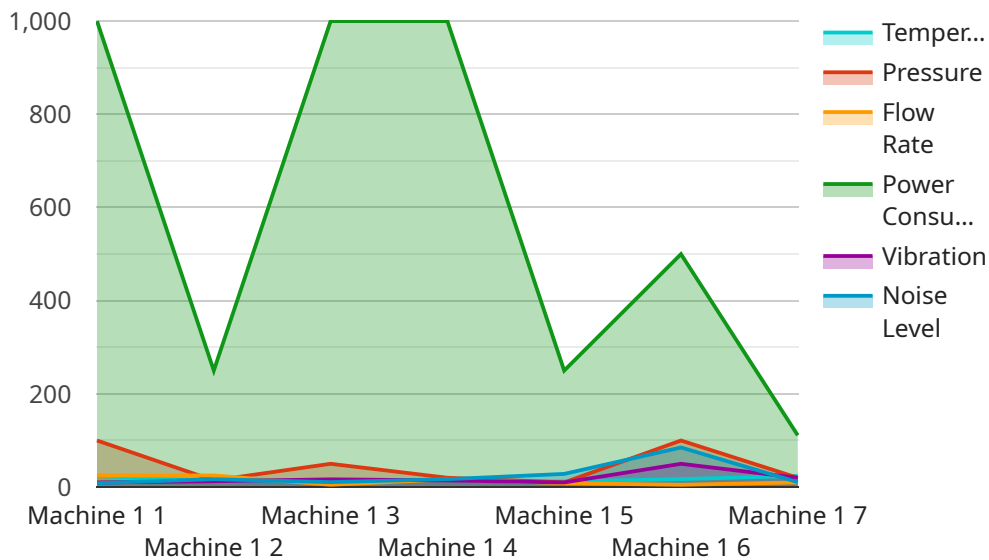
- 1. Real-Time Monitoring:** Ayutthaya Cement Factory Remote Monitoring and Control provides real-time visibility into the cement production process, allowing businesses to monitor key performance indicators (KPIs) such as production output, energy consumption, and equipment status. By having access to real-time data, businesses can quickly identify and address any issues or deviations from optimal operating conditions.
- 2. Remote Control:** This system enables businesses to remotely control and adjust various aspects of the cement production process. Operators can make changes to process parameters, such as temperature, pressure, and feed rates, from a remote location. This allows for quick and efficient adjustments to optimize production and minimize downtime.
- 3. Predictive Maintenance:** Ayutthaya Cement Factory Remote Monitoring and Control leverages data analytics to predict potential equipment failures and maintenance needs. By analyzing historical data and identifying patterns, businesses can proactively schedule maintenance tasks, reducing unplanned downtime and ensuring optimal equipment performance.
- 4. Energy Optimization:** This system provides insights into energy consumption patterns and identifies areas for improvement. Businesses can use this information to optimize energy usage, reduce operating costs, and enhance sustainability.
- 5. Improved Safety:** Remote monitoring and control capabilities allow businesses to minimize the need for on-site personnel, reducing the risk of accidents and improving overall safety in the cement production environment.

Ayutthaya Cement Factory Remote Monitoring and Control offers businesses a range of benefits, including real-time monitoring, remote control, predictive maintenance, energy optimization, and

improved safety. By leveraging this system, businesses can enhance operational efficiency, reduce costs, and ensure the smooth and reliable operation of their cement production processes.

API Payload Example

The provided payload is related to a comprehensive solution called "Ayutthaya Cement Factory Remote Monitoring and Control".



DATA VISUALIZATION OF THE PAYLOADS FOCUS

" This solution enables businesses to remotely monitor and control their cement production processes. It empowers them with the ability to optimize operations, improve efficiency, and enhance overall productivity. The payload showcases the capabilities, skills, and expertise of the company in providing pragmatic solutions to challenges in the field of remote monitoring and control. It highlights the use of advanced technologies and the team's deep understanding of the industry to deliver tailored solutions that meet the specific needs of cement producers. By leveraging this solution, businesses can gain valuable insights into their production processes, make informed decisions, and ultimately increase their profitability.

```
▼ [
  ▼ {
    "device_name": "Cement Factory Remote Monitoring and Control",
    "sensor_id": "CF12345",
    ▼ "data": {
      "sensor_type": "Cement Factory Remote Monitoring and Control",
      "location": "Factory",
      "production_line": "Line 1",
      "machine_id": "Machine 1",
      "temperature": 120,
      "pressure": 100,
      "flow_rate": 50,
      "power_consumption": 1000,
      "vibration": 0.5,
    }
  }
]
```

```
"noise_level": 85,  
"calibration_date": "2023-03-08",  
"calibration_status": "Valid"
```

```
}
```

```
}
```

```
]
```

Ayutthaya Cement Factory Remote Monitoring and Control Licensing

The Ayutthaya Cement Factory Remote Monitoring and Control system is a powerful tool that enables businesses to remotely monitor and control their cement production processes. This system offers several key benefits and applications for businesses, including real-time monitoring, remote control, predictive maintenance, energy optimization, and improved safety.

To use the Ayutthaya Cement Factory Remote Monitoring and Control system, businesses must purchase a license. There are three types of licenses available:

1. **Basic Subscription:** The Basic Subscription includes access to the Ayutthaya Cement Factory Remote Monitoring and Control platform, as well as basic support.
2. **Standard Subscription:** The Standard Subscription includes access to the Ayutthaya Cement Factory Remote Monitoring and Control platform, as well as standard support and additional features such as predictive maintenance.
3. **Premium Subscription:** The Premium Subscription includes access to the Ayutthaya Cement Factory Remote Monitoring and Control platform, as well as premium support and additional features such as energy optimization.

The cost of a license will vary depending on the size and complexity of the cement production facility and the specific requirements of the business. Factors that may affect the cost include the number of sensors and other hardware required, the level of support and maintenance needed, and the subscription plan selected.

In addition to the cost of the license, businesses will also need to pay for the cost of running the service. This cost will include the cost of processing power, storage, and bandwidth. The cost of running the service will vary depending on the size and complexity of the cement production facility and the specific requirements of the business.

Businesses that are considering using the Ayutthaya Cement Factory Remote Monitoring and Control system should carefully consider the cost of the license and the cost of running the service before making a decision.

Ayutthaya Cement Factory Remote Monitoring and Control: Hardware Requirements

Ayutthaya Cement Factory Remote Monitoring and Control is a powerful tool that enables businesses to remotely monitor and control their cement production processes. This system uses a combination of sensors, data analytics, and cloud-based technologies to provide real-time visibility, remote control, predictive maintenance, energy optimization, and improved safety.

Hardware Requirements

To use Ayutthaya Cement Factory Remote Monitoring and Control, businesses will need to install hardware at their cement factory. The hardware required will vary depending on the size and complexity of the factory.

The following hardware models are available:

1. **Model A:** This model is designed for small to medium-sized cement factories.
2. **Model B:** This model is designed for large cement factories.
3. **Model C:** This model is designed for cement factories with complex production processes.

The hardware will be installed by a team of experienced engineers. The installation process will typically take 12-16 weeks.

How the Hardware is Used

The hardware is used to collect data from sensors throughout the cement factory. This data is then sent to the cloud, where it is analyzed and used to provide real-time visibility, remote control, predictive maintenance, energy optimization, and improved safety.

The hardware is essential for the operation of Ayutthaya Cement Factory Remote Monitoring and Control. Without the hardware, the system would not be able to collect data or provide the benefits that it does.

Frequently Asked Questions:

What are the benefits of using the Ayutthaya Cement Factory Remote Monitoring and Control system?

The Ayutthaya Cement Factory Remote Monitoring and Control system offers several benefits, including real-time monitoring, remote control, predictive maintenance, energy optimization, and improved safety.

How much does the Ayutthaya Cement Factory Remote Monitoring and Control system cost?

The cost of the Ayutthaya Cement Factory Remote Monitoring and Control system may vary depending on the size and complexity of the cement production facility and the specific requirements of the business. Factors that may affect the cost include the number of sensors and other hardware required, the level of support and maintenance needed, and the subscription plan selected.

How long does it take to implement the Ayutthaya Cement Factory Remote Monitoring and Control system?

The implementation time may vary depending on the size and complexity of the cement production facility and the specific requirements of the business. However, our team of experienced engineers will work closely with you to ensure a smooth and efficient implementation process.

What kind of support is available for the Ayutthaya Cement Factory Remote Monitoring and Control system?

Our team of experienced engineers provides ongoing support for the Ayutthaya Cement Factory Remote Monitoring and Control system. We offer a range of support options, including phone, email, and remote support, to ensure that you get the help you need when you need it.

Can the Ayutthaya Cement Factory Remote Monitoring and Control system be integrated with other systems?

Yes, the Ayutthaya Cement Factory Remote Monitoring and Control system can be integrated with other systems, such as enterprise resource planning (ERP) systems and manufacturing execution systems (MES). This allows you to centralize your data and gain a complete view of your operations.

Ayutthaya Cement Factory Remote Monitoring and Control Project Timeline and Costs

Timeline

1. Consultation: 1-2 hours

During the consultation, our team will discuss your specific needs and requirements, assess your existing infrastructure, and provide recommendations for the implementation of the Ayutthaya Cement Factory Remote Monitoring and Control system.

2. Implementation: 3-4 weeks

The implementation time may vary depending on the size and complexity of your cement production facility and your specific requirements. Our team of experienced engineers will work closely with you to ensure a smooth and efficient implementation process.

Costs

The cost of the Ayutthaya Cement Factory Remote Monitoring and Control system may vary depending on the size and complexity of your cement production facility and your specific requirements. Factors that may affect the cost include:

- Number of sensors and other hardware required
- Level of support and maintenance needed
- Subscription plan selected

Our team will work with you to determine the best pricing option for your needs.

Price range: \$10,000 - \$50,000 USD

Meet Our Key Players in Project Management

Get to know the experienced leadership driving our project management forward: Sandeep Bharadwaj, a seasoned professional with a rich background in securities trading and technology entrepreneurship, and Stuart Dawsons, our Lead AI Engineer, spearheading innovation in AI solutions. Together, they bring decades of expertise to ensure the success of our projects.



Stuart Dawsons

Lead AI Engineer

Under Stuart Dawsons' leadership, our lead engineer, the company stands as a pioneering force in engineering groundbreaking AI solutions. Stuart brings to the table over a decade of specialized experience in machine learning and advanced AI solutions. His commitment to excellence is evident in our strategic influence across various markets. Navigating global landscapes, our core aim is to deliver inventive AI solutions that drive success internationally. With Stuart's guidance, expertise, and unwavering dedication to engineering excellence, we are well-positioned to continue setting new standards in AI innovation.



Sandeep Bharadwaj

Lead AI Consultant

As our lead AI consultant, Sandeep Bharadwaj brings over 29 years of extensive experience in securities trading and financial services across the UK, India, and Hong Kong. His expertise spans equities, bonds, currencies, and algorithmic trading systems. With leadership roles at DE Shaw, Tradition, and Tower Capital, Sandeep has a proven track record in driving business growth and innovation. His tenure at Tata Consultancy Services and Moody's Analytics further solidifies his proficiency in OTC derivatives and financial analytics. Additionally, as the founder of a technology company specializing in AI, Sandeep is uniquely positioned to guide and empower our team through its journey with our company. Holding an MBA from Manchester Business School and a degree in Mechanical Engineering from Manipal Institute of Technology, Sandeep's strategic insights and technical acumen will be invaluable assets in advancing our AI initiatives.