



SERVICE GUIDE

DETAILED INFORMATION ABOUT WHAT WE OFFER

Ai

[AIMLPROGRAMMING.COM](https://aimlprogramming.com)

Abstract: Ayutthaya Tire Pressure Monitoring provides pragmatic solutions for businesses to optimize fleet operations, enhance safety, and reduce costs. It utilizes sensors and data analytics to monitor tire pressure in real-time, enabling businesses to address issues promptly, implement predictive maintenance, and gain valuable insights. By ensuring optimal tire pressure, Ayutthaya Tire Pressure Monitoring reduces fuel consumption, extends tire life, improves vehicle safety, and promotes environmental sustainability. It empowers businesses to make informed decisions, optimize maintenance schedules, and achieve greater efficiency and profitability.

Ayutthaya Tire Pressure Monitoring

Ayutthaya Tire Pressure Monitoring is a cutting-edge technology designed to empower businesses with the ability to seamlessly monitor and maintain optimal tire pressure for their vehicles. This document aims to provide a comprehensive overview of the capabilities, benefits, and applications of Ayutthaya Tire Pressure Monitoring.

Through the integration of advanced sensors and data analytics, Ayutthaya Tire Pressure Monitoring offers a wide range of advantages and functionalities that can significantly enhance fleet operations, promote safety, reduce costs, and contribute to environmental sustainability.

This document will delve into the intricacies of Ayutthaya Tire Pressure Monitoring, showcasing its ability to:

- Optimize fleet management by monitoring tire pressure in real-time, leading to reduced fuel consumption, extended tire life, and improved vehicle safety.
- Enhance safety and compliance by providing real-time alerts and notifications when tire pressure falls below or exceeds recommended levels.
- Implement predictive maintenance strategies by monitoring tire pressure trends and identifying potential issues before they become major problems.
- Provide valuable data and insights into tire performance, enabling businesses to identify patterns, optimize tire maintenance schedules, and make informed decisions.
- Contribute to environmental sustainability by reducing fuel consumption and emissions through the maintenance of optimal tire pressure.

By leveraging the capabilities of Ayutthaya Tire Pressure Monitoring, businesses can gain a competitive edge by improving

SERVICE NAME

Ayutthaya Tire Pressure Monitoring

INITIAL COST RANGE

\$10,000 to \$25,000

FEATURES

- Real-time tire pressure monitoring
- Alerts and notifications when tire pressure falls below or exceeds recommended levels
- Predictive maintenance capabilities to identify potential issues before they become major problems
- Data-driven insights to help you optimize tire maintenance schedules and improve overall fleet performance
- Environmental sustainability by reducing fuel consumption and emissions

IMPLEMENTATION TIME

6-8 weeks

CONSULTATION TIME

1 hour

DIRECT

<https://aimlprogramming.com/services/ayutthaya-tire-pressure-monitoring/>

RELATED SUBSCRIPTIONS

- Ayutthaya Tire Pressure Monitoring Standard Subscription
- Ayutthaya Tire Pressure Monitoring Premium Subscription

HARDWARE REQUIREMENT

- Ayutthaya Tire Pressure Sensor
- Ayutthaya Tire Pressure Gateway

fleet operations, enhancing safety, reducing costs, and promoting sustainability.



Ayutthaya Tire Pressure Monitoring

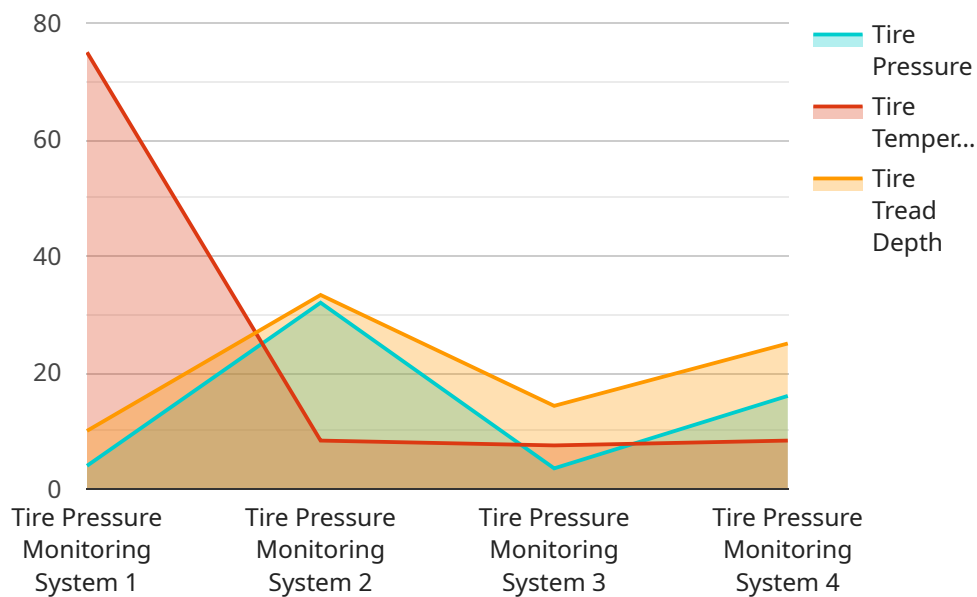
Ayutthaya Tire Pressure Monitoring is a powerful technology that enables businesses to automatically monitor and maintain optimal tire pressure for their vehicles. By leveraging advanced sensors and data analytics, Ayutthaya Tire Pressure Monitoring offers several key benefits and applications for businesses:

1. **Fleet Management:** Ayutthaya Tire Pressure Monitoring can help businesses optimize their fleet operations by monitoring tire pressure in real-time. By ensuring optimal tire pressure, businesses can reduce fuel consumption, extend tire life, and improve vehicle safety, leading to significant cost savings and improved operational efficiency.
2. **Safety and Compliance:** Maintaining proper tire pressure is crucial for vehicle safety and compliance with industry regulations. Ayutthaya Tire Pressure Monitoring provides businesses with real-time alerts and notifications when tire pressure falls below or exceeds recommended levels, enabling them to address issues promptly and ensure the safety of their drivers and vehicles.
3. **Predictive Maintenance:** Ayutthaya Tire Pressure Monitoring can help businesses implement predictive maintenance strategies by monitoring tire pressure trends and identifying potential issues before they become major problems. By proactively addressing tire pressure concerns, businesses can minimize downtime, reduce maintenance costs, and extend the lifespan of their vehicles.
4. **Data-Driven Insights:** Ayutthaya Tire Pressure Monitoring provides businesses with valuable data and insights into their tire performance. By analyzing tire pressure data, businesses can identify patterns, optimize tire maintenance schedules, and make informed decisions to improve overall fleet performance and efficiency.
5. **Environmental Sustainability:** Maintaining optimal tire pressure contributes to environmental sustainability by reducing fuel consumption and emissions. Ayutthaya Tire Pressure Monitoring helps businesses reduce their carbon footprint and promote sustainable fleet operations.

Ayutthaya Tire Pressure Monitoring offers businesses a comprehensive solution for tire pressure management, enabling them to improve fleet operations, enhance safety, reduce costs, and promote sustainability. By leveraging advanced technology and data analytics, businesses can optimize their tire performance and achieve greater efficiency and profitability.

API Payload Example

The provided payload describes Ayutthaya Tire Pressure Monitoring, a cutting-edge technology designed to optimize tire pressure management for businesses.



DATA VISUALIZATION OF THE PAYLOADS FOCUS

By integrating advanced sensors and data analytics, this system offers a comprehensive suite of capabilities. It enables real-time monitoring of tire pressure, providing insights into fleet operations and tire performance. The system enhances safety by issuing alerts for deviations from recommended pressure levels. Moreover, it facilitates predictive maintenance strategies by identifying potential issues early on. By optimizing tire pressure, Ayutthaya Tire Pressure Monitoring reduces fuel consumption, extends tire life, and promotes environmental sustainability. Its data-driven insights empower businesses to make informed decisions, improve fleet management, enhance safety, and reduce costs. This technology empowers businesses to gain a competitive edge by leveraging data-driven insights to optimize fleet operations, promote safety, reduce costs, and contribute to environmental sustainability.

```
▼ [
  ▼ {
    "device_name": "Tire Pressure Monitoring System",
    "sensor_id": "TPM12345",
    ▼ "data": {
      "sensor_type": "Tire Pressure Monitoring System",
      "location": "Factory Floor",
      "tire_pressure": 32,
      "tire_temperature": 75,
      "tire_tread_depth": 8,
      "tire_rotation_date": "2023-03-08",
      "tire_inspection_date": "2023-03-15",
```

```
]
  {
    "factory_name": "Ayutthaya Tire Factory",
    "plant_number": "12345"
  }
}
```

Ayutthaya Tire Pressure Monitoring Licensing

Ayutthaya Tire Pressure Monitoring is a powerful technology that enables businesses to automatically monitor and maintain optimal tire pressure for their vehicles. By leveraging advanced sensors and data analytics, Ayutthaya Tire Pressure Monitoring offers several key benefits and applications for businesses, including fleet management, safety and compliance, predictive maintenance, data-driven insights, and environmental sustainability.

Licensing

Ayutthaya Tire Pressure Monitoring is available under two different licensing options:

1. **Ayutthaya Tire Pressure Monitoring Standard Subscription**
2. **Ayutthaya Tire Pressure Monitoring Premium Subscription**

Ayutthaya Tire Pressure Monitoring Standard Subscription

The Ayutthaya Tire Pressure Monitoring Standard Subscription includes all of the features of the basic subscription, plus the following:

- Real-time tire pressure monitoring
- Alerts and notifications when tire pressure falls below or exceeds recommended levels
- Predictive maintenance capabilities to identify potential issues before they become major problems
- Data-driven insights to help you optimize tire maintenance schedules and improve overall fleet performance
- Environmental sustainability by reducing fuel consumption and emissions

Ayutthaya Tire Pressure Monitoring Premium Subscription

The Ayutthaya Tire Pressure Monitoring Premium Subscription includes all of the features of the standard subscription, plus the following:

- Real-time tire pressure monitoring
- Alerts and notifications when tire pressure falls below or exceeds recommended levels
- Predictive maintenance capabilities to identify potential issues before they become major problems
- Data-driven insights to help you optimize tire maintenance schedules and improve overall fleet performance
- Environmental sustainability by reducing fuel consumption and emissions
- Additional features, such as GPS tracking and remote diagnostics

Cost

The cost of Ayutthaya Tire Pressure Monitoring will vary depending on the size and complexity of your fleet, as well as the specific features and services that you require. However, we typically estimate that the cost of the system will range from \$10,000 to \$25,000.

Ongoing Support and Improvement Packages

In addition to our standard licensing options, we also offer a variety of ongoing support and improvement packages. These packages can provide you with additional peace of mind and help you get the most out of your Ayutthaya Tire Pressure Monitoring system.

Our ongoing support and improvement packages include:

- **24/7 technical support**
- **Software updates**
- **Hardware repairs**
- **Training**
- **Consulting**

We encourage you to contact us to learn more about our ongoing support and improvement packages.

Ayutthaya Tire Pressure Monitoring: Hardware Overview

Ayutthaya Tire Pressure Monitoring is a powerful technology that enables businesses to automatically monitor and maintain optimal tire pressure for their vehicles. The system consists of two main hardware components:

1. **Ayutthaya Tire Pressure Sensor:** This sensor is installed on each tire and measures tire pressure, temperature, and other factors. The sensor transmits this data wirelessly to the Ayutthaya Tire Pressure Gateway.
2. **Ayutthaya Tire Pressure Gateway:** This device collects data from the tire pressure sensors and transmits it to the Ayutthaya Tire Pressure Monitoring system. The gateway can be installed in a vehicle or in a central location, such as a fleet management office.

The Ayutthaya Tire Pressure Monitoring system is easy to install and use. It can be integrated with your existing fleet management system or used as a standalone solution.

Benefits of Using Ayutthaya Tire Pressure Monitoring Hardware

- **Accurate and reliable tire pressure data:** The Ayutthaya Tire Pressure Sensor is a high-quality, durable sensor that is designed to provide accurate and reliable tire pressure data. It is easy to install and can be used on a variety of vehicles.
- **Real-time tire pressure monitoring:** The Ayutthaya Tire Pressure Gateway collects data from the tire pressure sensors and transmits it to the Ayutthaya Tire Pressure Monitoring system in real-time. This allows you to monitor tire pressure levels remotely and receive alerts when tire pressure falls below or exceeds recommended levels.
- **Predictive maintenance capabilities:** The Ayutthaya Tire Pressure Monitoring system can help you identify potential tire problems before they become major issues. By monitoring tire pressure trends, the system can alert you to slow leaks, gradual pressure loss, or other issues that could lead to tire failure.
- **Data-driven insights:** The Ayutthaya Tire Pressure Monitoring system provides you with valuable data and insights into your tire performance. This data can help you optimize tire maintenance schedules, improve fleet efficiency, and reduce operating costs.

If you are looking for a comprehensive tire pressure monitoring solution, Ayutthaya Tire Pressure Monitoring is the perfect choice. Our hardware is designed to provide accurate and reliable data, and our system is easy to install and use. Contact us today to learn more about how Ayutthaya Tire Pressure Monitoring can help you improve your fleet operations.

Frequently Asked Questions:

What are the benefits of using Ayutthaya Tire Pressure Monitoring?

Ayutthaya Tire Pressure Monitoring offers a number of benefits for businesses, including:

How does Ayutthaya Tire Pressure Monitoring work?

Ayutthaya Tire Pressure Monitoring uses a network of sensors to collect data on tire pressure, temperature, and other factors. This data is then transmitted to a central hub, where it is analyzed and used to generate alerts and reports.

What types of vehicles can Ayutthaya Tire Pressure Monitoring be used on?

Ayutthaya Tire Pressure Monitoring can be used on a variety of vehicles, including cars, trucks, buses, and trailers.

How much does Ayutthaya Tire Pressure Monitoring cost?

The cost of Ayutthaya Tire Pressure Monitoring will vary depending on the size and complexity of your fleet, as well as the specific features and services that you require. However, we typically estimate that the cost of the system will range from \$10,000 to \$25,000.

How can I get started with Ayutthaya Tire Pressure Monitoring?

To get started with Ayutthaya Tire Pressure Monitoring, please contact us for a free consultation.

Ayutthaya Tire Pressure Monitoring: Project Timeline and Costs

Consultation Period:

- Duration: 1 hour
- Details: During this free consultation, we will discuss your specific needs and requirements, and provide a detailed overview of the Ayutthaya Tire Pressure Monitoring system and its benefits.

Project Implementation Timeline:

- Estimated Time: 6-8 weeks
- Details: The implementation process will vary depending on the size and complexity of your fleet. We will work closely with you to determine the optimal timeline for your specific situation.

Cost Range:

- Price Range: \$10,000 - \$25,000 (USD)
- Explanation: The cost of the system will depend on the size and complexity of your fleet, as well as the specific features and services you require. We will provide you with a detailed quote during the consultation period.

Additional Notes:

- Hardware is required for the system to function. We offer a range of hardware options to meet your specific needs.
- A subscription is required to access the Ayutthaya Tire Pressure Monitoring system and its features. We offer two subscription plans to choose from.

We understand that every business is unique, and we are committed to providing a tailored solution that meets your specific requirements. Please contact us today to schedule a free consultation and learn more about how Ayutthaya Tire Pressure Monitoring can benefit your business.

Meet Our Key Players in Project Management

Get to know the experienced leadership driving our project management forward: Sandeep Bharadwaj, a seasoned professional with a rich background in securities trading and technology entrepreneurship, and Stuart Dawsons, our Lead AI Engineer, spearheading innovation in AI solutions. Together, they bring decades of expertise to ensure the success of our projects.



Stuart Dawsons

Lead AI Engineer

Under Stuart Dawsons' leadership, our lead engineer, the company stands as a pioneering force in engineering groundbreaking AI solutions. Stuart brings to the table over a decade of specialized experience in machine learning and advanced AI solutions. His commitment to excellence is evident in our strategic influence across various markets. Navigating global landscapes, our core aim is to deliver inventive AI solutions that drive success internationally. With Stuart's guidance, expertise, and unwavering dedication to engineering excellence, we are well-positioned to continue setting new standards in AI innovation.



Sandeep Bharadwaj

Lead AI Consultant

As our lead AI consultant, Sandeep Bharadwaj brings over 29 years of extensive experience in securities trading and financial services across the UK, India, and Hong Kong. His expertise spans equities, bonds, currencies, and algorithmic trading systems. With leadership roles at DE Shaw, Tradition, and Tower Capital, Sandeep has a proven track record in driving business growth and innovation. His tenure at Tata Consultancy Services and Moody's Analytics further solidifies his proficiency in OTC derivatives and financial analytics. Additionally, as the founder of a technology company specializing in AI, Sandeep is uniquely positioned to guide and empower our team through its journey with our company. Holding an MBA from Manchester Business School and a degree in Mechanical Engineering from Manipal Institute of Technology, Sandeep's strategic insights and technical acumen will be invaluable assets in advancing our AI initiatives.