

SERVICE GUIDE

DETAILED INFORMATION ABOUT WHAT WE OFFER

The logo features a large, bold, cyan-colored letter 'A' followed by a smaller, white, lowercase letter 'i'. The 'i' has a white dot and a thin white tail. The background of the entire page is a dark, abstract pattern of glowing purple and blue lines, resembling a circuit board or a neural network diagram.

[AIMLPROGRAMMING.COM](https://aimlprogramming.com)

Abstract: Chiang Rai Food Safety Monitoring is a comprehensive service that provides pragmatic coded solutions to food safety issues. Our approach focuses on compliance, quality control, traceability, consumer confidence, and market access. By leveraging technology and rigorous inspection processes, we empower businesses to meet the highest standards of food safety and quality. Our services help businesses comply with regulations, ensure product consistency, track food movements, build consumer trust, and expand market reach. Through our commitment to supporting the local food industry and protecting consumer well-being, we strive to create a safe and thriving food ecosystem in Chiang Rai.

Chiang Rai Food Safety Monitoring

Chiang Rai Food Safety Monitoring is a comprehensive system designed to ensure the safety and quality of food products in Chiang Rai, Thailand. This document showcases our company's capabilities in providing pragmatic solutions to food safety issues through coded solutions.

This introduction outlines the purpose of the document, which is to demonstrate our understanding of Chiang Rai food safety monitoring and showcase our skills in developing effective solutions. We aim to provide a detailed overview of our approach, methodologies, and the benefits that our services can bring to businesses in the food industry.

Our focus on Chiang Rai food safety monitoring is driven by our commitment to supporting the local food industry and ensuring the health and well-being of consumers. We believe that by leveraging technology and adhering to rigorous inspection processes, we can empower businesses to meet the highest standards of food safety and quality.

Throughout this document, we will delve into the specific aspects of Chiang Rai food safety monitoring, including compliance, quality control, traceability, consumer confidence, and market access. We will also provide examples of how our coded solutions have helped businesses overcome challenges and achieve their food safety goals.

SERVICE NAME

Chiang Rai Food Safety Monitoring

INITIAL COST RANGE

\$1,000 to \$5,000

FEATURES

- Food Safety Compliance
- Quality Control
- Traceability and Accountability
- Consumer Confidence
- Market Access

IMPLEMENTATION TIME

4-6 weeks

CONSULTATION TIME

1 hour

DIRECT

<https://aimlprogramming.com/services/chiang-rai-food-safety-monitoring/>

RELATED SUBSCRIPTIONS

- Ongoing Support License
- Premium Support License
- Enterprise Support License

HARDWARE REQUIREMENT

Yes



Chiang Rai Food Safety Monitoring

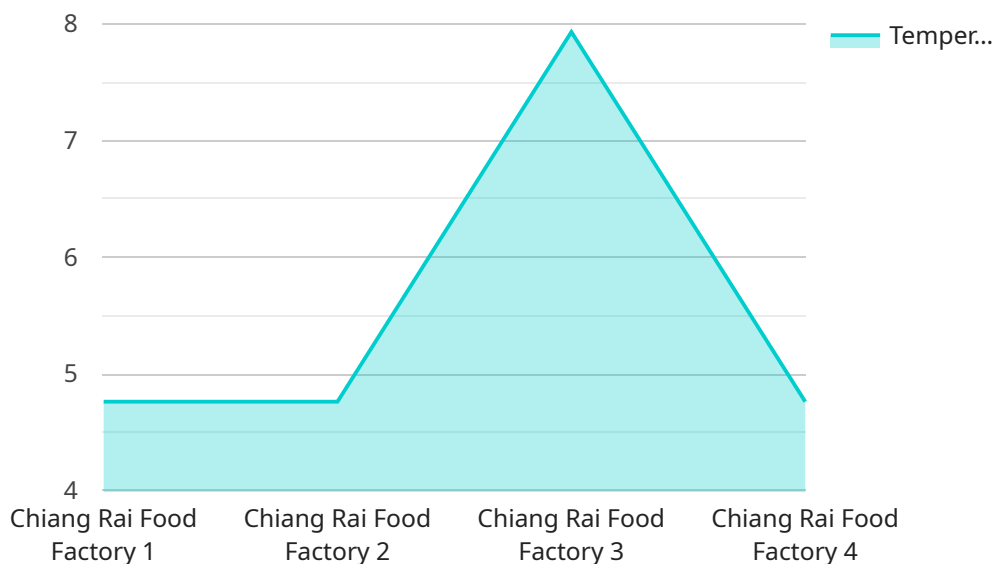
Chiang Rai Food Safety Monitoring is a comprehensive system designed to ensure the safety and quality of food products in Chiang Rai, Thailand. By leveraging advanced technology and rigorous inspection processes, this system provides businesses with several key benefits and applications:

- 1. Food Safety Compliance:** Chiang Rai Food Safety Monitoring helps businesses comply with local and international food safety regulations, ensuring that their products meet the highest standards of quality and safety. By adhering to strict inspection protocols, businesses can minimize the risk of foodborne illnesses and protect the health of consumers.
- 2. Quality Control:** The system provides businesses with a comprehensive quality control mechanism, enabling them to identify and address any potential food safety issues. Through regular inspections and testing, businesses can ensure the consistency and quality of their food products, meeting the expectations of their customers and maintaining their reputation.
- 3. Traceability and Accountability:** Chiang Rai Food Safety Monitoring establishes a robust traceability system, allowing businesses to track the movement of food products throughout the supply chain. In the event of a food safety incident, businesses can quickly identify the source of the problem and take appropriate action to mitigate risks and protect consumers.
- 4. Consumer Confidence:** By implementing a rigorous food safety monitoring system, businesses can instill confidence among consumers that their products are safe and of high quality. This can lead to increased customer loyalty, positive brand reputation, and enhanced sales.
- 5. Market Access:** Chiang Rai Food Safety Monitoring facilitates market access for businesses by meeting the food safety requirements of international markets. By adhering to global standards, businesses can expand their reach, increase exports, and tap into new revenue streams.

Chiang Rai Food Safety Monitoring plays a vital role in supporting the food industry in Chiang Rai, ensuring the safety and quality of food products, protecting consumer health, and fostering economic growth. By leveraging this system, businesses can demonstrate their commitment to food safety, enhance their reputation, and drive success in the competitive food market.

API Payload Example

The payload is related to a service that provides comprehensive food safety monitoring solutions for businesses in Chiang Rai, Thailand.



DATA VISUALIZATION OF THE PAYLOADS FOCUS

The service leverages technology and rigorous inspection processes to help businesses meet the highest standards of food safety and quality.

The service focuses on various aspects of food safety monitoring, including compliance, quality control, traceability, consumer confidence, and market access. It provides coded solutions that assist businesses in overcoming challenges and achieving their food safety goals.

By utilizing this service, businesses can ensure the safety and quality of their food products, build consumer confidence, and gain access to new markets. The service is designed to support the local food industry and promote the health and well-being of consumers in Chiang Rai.

```
▼ [
  ▼ {
    "device_name": "Chiang Rai Food Safety Monitoring",
    "sensor_id": "CRFSM12345",
    ▼ "data": {
      "sensor_type": "Food Safety Monitoring",
      "location": "Factory",
      "temperature": 23.8,
      "humidity": 65,
      "co2_level": 1000,
      "nh3_level": 500,
      "h2s_level": 250,
    }
  }
]
```

```
    "so2_level": 100,  
    "no2_level": 50,  
    "o3_level": 25,  
    "pm2_5_level": 10,  
    "pm10_level": 5,  
    "factory_name": "Chiang Rai Food Factory",  
    "factory_address": "123 Chiang Rai Road, Chiang Rai, Thailand",  
    "factory_contact_person": "John Smith",  
    "factory_contact_number": "+66 81 123 4567",  
    "factory_contact_email": "john.smith@chiangraifoodfactory.com"  
  }  
}
```

Chiang Rai Food Safety Monitoring Licensing

Chiang Rai Food Safety Monitoring requires a subscription to one of our ongoing support licenses. This license provides you with access to our team of experts who can help you with any questions or issues you may have.

We offer three different levels of support licenses:

1. **Ongoing Support License:** This license provides you with access to our team of experts for basic support and troubleshooting.
2. **Premium Support License:** This license provides you with access to our team of experts for priority support and troubleshooting, as well as access to our premium support features.
3. **Enterprise Support License:** This license provides you with access to our team of experts for 24/7 support and troubleshooting, as well as access to our enterprise support features.

The cost of your support license will vary depending on the level of support you require. Please contact us for more information.

Benefits of a Support License

There are many benefits to having a support license for Chiang Rai Food Safety Monitoring. These benefits include:

- Access to our team of experts for support and troubleshooting
- Priority support for Premium and Enterprise Support License holders
- Access to our premium support features for Premium and Enterprise Support License holders
- 24/7 support for Enterprise Support License holders
- Peace of mind knowing that you have access to the support you need to keep your food safety monitoring system running smoothly

If you are interested in purchasing a support license for Chiang Rai Food Safety Monitoring, please contact us today.

Frequently Asked Questions:

What are the benefits of using Chiang Rai Food Safety Monitoring?

Chiang Rai Food Safety Monitoring provides a number of benefits for businesses, including food safety compliance, quality control, traceability and accountability, consumer confidence, and market access.

How much does Chiang Rai Food Safety Monitoring cost?

The cost of Chiang Rai Food Safety Monitoring will vary depending on the size and complexity of your business. However, we typically estimate that the cost will range from \$1,000 to \$5,000 per year.

How long does it take to implement Chiang Rai Food Safety Monitoring?

The time to implement Chiang Rai Food Safety Monitoring will vary depending on the size and complexity of your business. However, we typically estimate that it will take 4-6 weeks to complete the implementation process.

What are the hardware requirements for Chiang Rai Food Safety Monitoring?

Chiang Rai Food Safety Monitoring requires a number of hardware components, including sensors, cameras, and data loggers.

What are the subscription requirements for Chiang Rai Food Safety Monitoring?

Chiang Rai Food Safety Monitoring requires a subscription to our ongoing support license. This license provides you with access to our team of experts who can help you with any questions or issues you may have.

Chiang Rai Food Safety Monitoring Project Timeline and Costs

Timeline

1. **Consultation:** 1 hour
2. **Implementation:** 4-6 weeks

Consultation

During the consultation period, we will work with you to understand your specific needs and requirements. We will also provide you with a detailed overview of the Chiang Rai Food Safety Monitoring system and how it can benefit your business.

Implementation

The time to implement Chiang Rai Food Safety Monitoring will vary depending on the size and complexity of your business. However, we typically estimate that it will take 4-6 weeks to complete the implementation process.

Costs

The cost of Chiang Rai Food Safety Monitoring will vary depending on the size and complexity of your business. However, we typically estimate that the cost will range from \$1,000 to \$5,000 per year.

The cost includes the following:

- Hardware
- Software
- Implementation
- Ongoing support

We offer a variety of subscription plans to meet the needs of your business. Please contact us for more information.

Meet Our Key Players in Project Management

Get to know the experienced leadership driving our project management forward: Sandeep Bharadwaj, a seasoned professional with a rich background in securities trading and technology entrepreneurship, and Stuart Dawsons, our Lead AI Engineer, spearheading innovation in AI solutions. Together, they bring decades of expertise to ensure the success of our projects.



Stuart Dawsons

Lead AI Engineer

Under Stuart Dawsons' leadership, our lead engineer, the company stands as a pioneering force in engineering groundbreaking AI solutions. Stuart brings to the table over a decade of specialized experience in machine learning and advanced AI solutions. His commitment to excellence is evident in our strategic influence across various markets. Navigating global landscapes, our core aim is to deliver inventive AI solutions that drive success internationally. With Stuart's guidance, expertise, and unwavering dedication to engineering excellence, we are well-positioned to continue setting new standards in AI innovation.



Sandeep Bharadwaj

Lead AI Consultant

As our lead AI consultant, Sandeep Bharadwaj brings over 29 years of extensive experience in securities trading and financial services across the UK, India, and Hong Kong. His expertise spans equities, bonds, currencies, and algorithmic trading systems. With leadership roles at DE Shaw, Tradition, and Tower Capital, Sandeep has a proven track record in driving business growth and innovation. His tenure at Tata Consultancy Services and Moody's Analytics further solidifies his proficiency in OTC derivatives and financial analytics. Additionally, as the founder of a technology company specializing in AI, Sandeep is uniquely positioned to guide and empower our team through its journey with our company. Holding an MBA from Manchester Business School and a degree in Mechanical Engineering from Manipal Institute of Technology, Sandeep's strategic insights and technical acumen will be invaluable assets in advancing our AI initiatives.