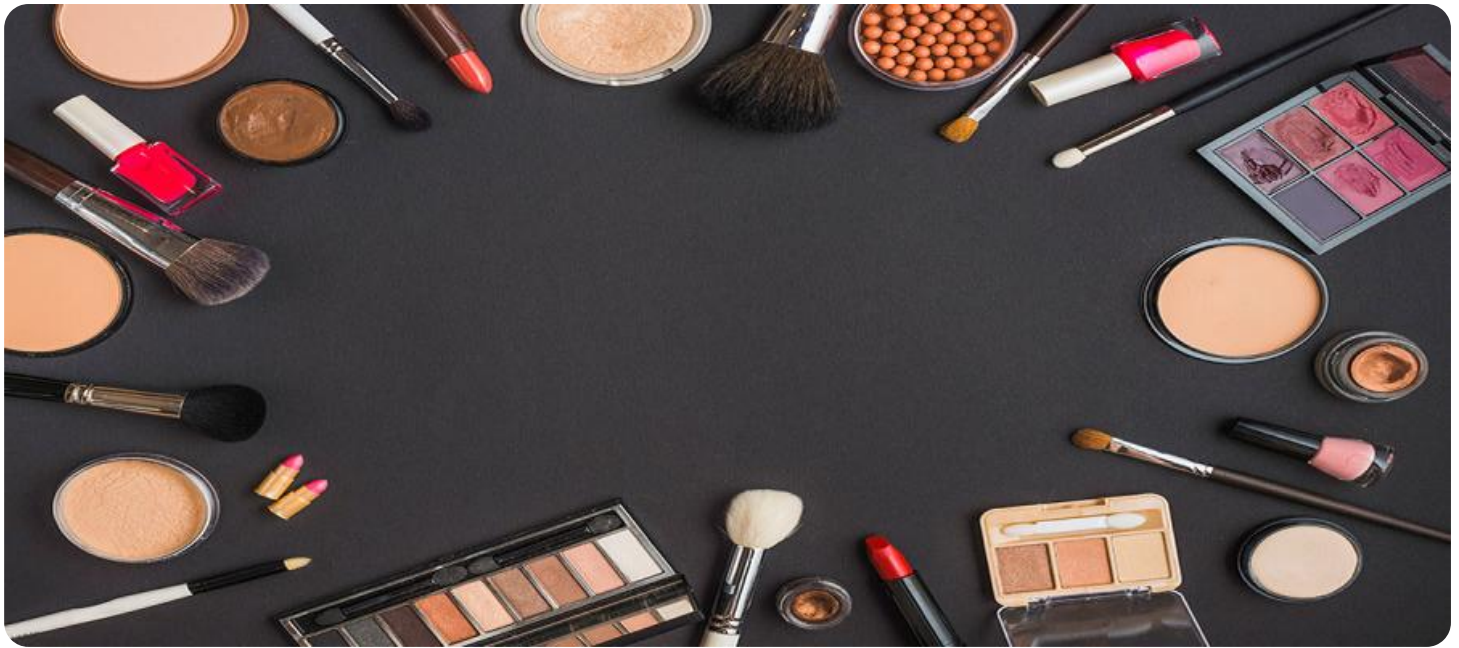


SAMPLE DATA

EXAMPLES OF PAYLOADS RELATED TO THE SERVICE

The logo consists of a large, bold, cyan-colored letter 'A' followed by a smaller, white, italicized letter 'i'. The 'i' has a white dot above it. The background of the entire page is a dark, abstract image of a circuit board with glowing cyan and magenta lines.

AIMLPROGRAMMING.COM



AI Cosmetic Ingredient Analysis Chonburi

AI Cosmetic Ingredient Analysis Chonburi is a powerful technology that enables businesses to automatically identify and analyze the ingredients of cosmetic products. By leveraging advanced algorithms and machine learning techniques, AI Cosmetic Ingredient Analysis Chonburi offers several key benefits and applications for businesses:

- 1. Product Development:** AI Cosmetic Ingredient Analysis Chonburi can help businesses develop new cosmetic products by analyzing the ingredients of existing products and identifying potential synergies or improvements. By understanding the composition and functionality of different ingredients, businesses can create innovative and effective cosmetic formulations that meet the needs of consumers.
- 2. Quality Control:** AI Cosmetic Ingredient Analysis Chonburi can be used to ensure the quality and safety of cosmetic products by detecting and identifying harmful or prohibited ingredients. By analyzing the composition of cosmetic products, businesses can ensure compliance with regulatory standards and minimize the risk of product recalls or adverse reactions.
- 3. Ingredient Research:** AI Cosmetic Ingredient Analysis Chonburi can provide businesses with valuable insights into the properties and functionality of different cosmetic ingredients. By analyzing the composition of cosmetic products and correlating it with consumer feedback or clinical data, businesses can identify the most effective ingredients for specific skin types or concerns.
- 4. Marketing and Sales:** AI Cosmetic Ingredient Analysis Chonburi can help businesses market and sell their cosmetic products by providing consumers with detailed information about the ingredients and their benefits. By leveraging AI-powered ingredient analysis, businesses can create personalized product recommendations, targeted marketing campaigns, and educational content that resonates with consumers and drives sales.
- 5. Regulatory Compliance:** AI Cosmetic Ingredient Analysis Chonburi can assist businesses in complying with regulatory requirements related to cosmetic product labeling and safety. By analyzing the composition of cosmetic products, businesses can ensure that all ingredients are properly disclosed and that the product meets the safety standards set by regulatory agencies.

AI Cosmetic Ingredient Analysis Chonburi offers businesses a wide range of applications, including product development, quality control, ingredient research, marketing and sales, and regulatory compliance, enabling them to improve product quality, enhance safety, drive innovation, and meet the evolving needs of consumers.

API Payload Example

The payload is a powerful tool that harnesses AI and machine learning to automate the identification and analysis of cosmetic product ingredients. It empowers businesses to access real-time data and insights on cosmetic ingredients, enabling informed decision-making. The payload leverages advanced algorithms and machine learning techniques to provide accurate and reliable analysis, ensuring that businesses can innovate their products and enhance their competitiveness in the ever-evolving cosmetic market. By utilizing the payload, businesses can gain a deep understanding of the cosmetic industry, regulatory requirements, and consumer trends, enabling them to transform their operations and make data-driven decisions.

Sample 1

```
▼ [
  ▼ {
    ▼ "cosmetic_ingredient_analysis": {
      "cosmetic_ingredient_name": "Cocamidopropyl Betaine",
      "cosmetic_ingredient_function": "Surfactant",
      "cosmetic_ingredient_category": "Cleansing Agent",
      "cosmetic_ingredient_safety_assessment": "Safe for use in cosmetics",
      "cosmetic_ingredient_regulatory_status": "Approved for use in the European Union",
      "cosmetic_ingredient_concentration_range": "5-15%",
      "cosmetic_ingredient_use": "Used in shampoos, body washes, and other cleansing products",
      "cosmetic_ingredient_benefits": "Creates a lather and helps to remove dirt and oil from the skin",
      "cosmetic_ingredient_precautions": "May cause skin irritation in some people",
      "cosmetic_ingredient_alternatives": "Sodium Lauryl Sulfate, Decyl glucoside",
      "cosmetic_ingredient_factory": "Chonburi, Thailand",
      "cosmetic_ingredient_plant": "Chonburi Plant 2"
    }
  }
]
```

Sample 2

```
▼ [
  ▼ {
    ▼ "cosmetic_ingredient_analysis": {
      "cosmetic_ingredient_name": "Cocamidopropyl Betaine",
      "cosmetic_ingredient_function": "Surfactant",
      "cosmetic_ingredient_category": "Cleansing Agent",
      "cosmetic_ingredient_safety_assessment": "Safe for use in cosmetics",
    }
  }
]
```

```

    "cosmetic_ingredient_regulatory_status": "Approved for use in the European Union",
    "cosmetic_ingredient_concentration_range": "5-15%",
    "cosmetic_ingredient_use": "Used in shampoos, body washes, and other cleansing products",
    "cosmetic_ingredient_benefits": "Creates a lather and helps to remove dirt and oil from the skin",
    "cosmetic_ingredient_precautions": "May cause skin irritation in some people",
    "cosmetic_ingredient_alternatives": "Sodium Lauryl Sulfate, Decyl glucoside",
    "cosmetic_ingredient_factory": "Chonburi, Thailand",
    "cosmetic_ingredient_plant": "Chonburi Plant 2"
  }
}
]

```

Sample 3

```

▼ [
  ▼ {
    ▼ "cosmetic_ingredient_analysis": {
      "cosmetic_ingredient_name": "Cocamidopropyl Betaine",
      "cosmetic_ingredient_function": "Surfactant",
      "cosmetic_ingredient_category": "Cleansing Agent",
      "cosmetic_ingredient_safety_assessment": "Safe for use in cosmetics",
      "cosmetic_ingredient_regulatory_status": "Approved for use in the European Union",
      "cosmetic_ingredient_concentration_range": "5-15%",
      "cosmetic_ingredient_use": "Used in shampoos, body washes, and other cleansing products",
      "cosmetic_ingredient_benefits": "Creates a lather and helps to remove dirt and oil from the skin",
      "cosmetic_ingredient_precautions": "May cause skin irritation in some people",
      "cosmetic_ingredient_alternatives": "Sodium Lauryl Sulfate, Decyl glucoside",
      "cosmetic_ingredient_factory": "Chonburi, Thailand",
      "cosmetic_ingredient_plant": "Chonburi Plant 2"
    }
  }
]

```

Sample 4

```

▼ [
  ▼ {
    ▼ "cosmetic_ingredient_analysis": {
      "cosmetic_ingredient_name": "Sodium Lauryl Sulfate",
      "cosmetic_ingredient_function": "Surfactant",
      "cosmetic_ingredient_category": "Cleansing Agent",
      "cosmetic_ingredient_safety_assessment": "Safe for use in cosmetics",
      "cosmetic_ingredient_regulatory_status": "Approved for use in the United States",
      "cosmetic_ingredient_concentration_range": "1-10%",

```

```
"cosmetic_ingredient_use": "Used in shampoos, body washes, and other cleansing products",  
"cosmetic_ingredient_benefits": "Creates a lather and helps to remove dirt and oil from the skin",  
"cosmetic_ingredient_precautions": "May cause skin irritation in some people",  
"cosmetic_ingredient_alternatives": "Cocamidopropyl betaine, Decyl glucoside",  
"cosmetic_ingredient_factory": "Chonburi, Thailand",  
"cosmetic_ingredient_plant": "Chonburi Plant 1"
```

```
}
```

```
}
```

```
]
```

Meet Our Key Players in Project Management

Get to know the experienced leadership driving our project management forward: Sandeep Bharadwaj, a seasoned professional with a rich background in securities trading and technology entrepreneurship, and Stuart Dawsons, our Lead AI Engineer, spearheading innovation in AI solutions. Together, they bring decades of expertise to ensure the success of our projects.



Stuart Dawsons

Lead AI Engineer

Under Stuart Dawsons' leadership, our lead engineer, the company stands as a pioneering force in engineering groundbreaking AI solutions. Stuart brings to the table over a decade of specialized experience in machine learning and advanced AI solutions. His commitment to excellence is evident in our strategic influence across various markets. Navigating global landscapes, our core aim is to deliver inventive AI solutions that drive success internationally. With Stuart's guidance, expertise, and unwavering dedication to engineering excellence, we are well-positioned to continue setting new standards in AI innovation.



Sandeep Bharadwaj

Lead AI Consultant

As our lead AI consultant, Sandeep Bharadwaj brings over 29 years of extensive experience in securities trading and financial services across the UK, India, and Hong Kong. His expertise spans equities, bonds, currencies, and algorithmic trading systems. With leadership roles at DE Shaw, Tradition, and Tower Capital, Sandeep has a proven track record in driving business growth and innovation. His tenure at Tata Consultancy Services and Moody's Analytics further solidifies his proficiency in OTC derivatives and financial analytics. Additionally, as the founder of a technology company specializing in AI, Sandeep is uniquely positioned to guide and empower our team through its journey with our company. Holding an MBA from Manchester Business School and a degree in Mechanical Engineering from Manipal Institute of Technology, Sandeep's strategic insights and technical acumen will be invaluable assets in advancing our AI initiatives.