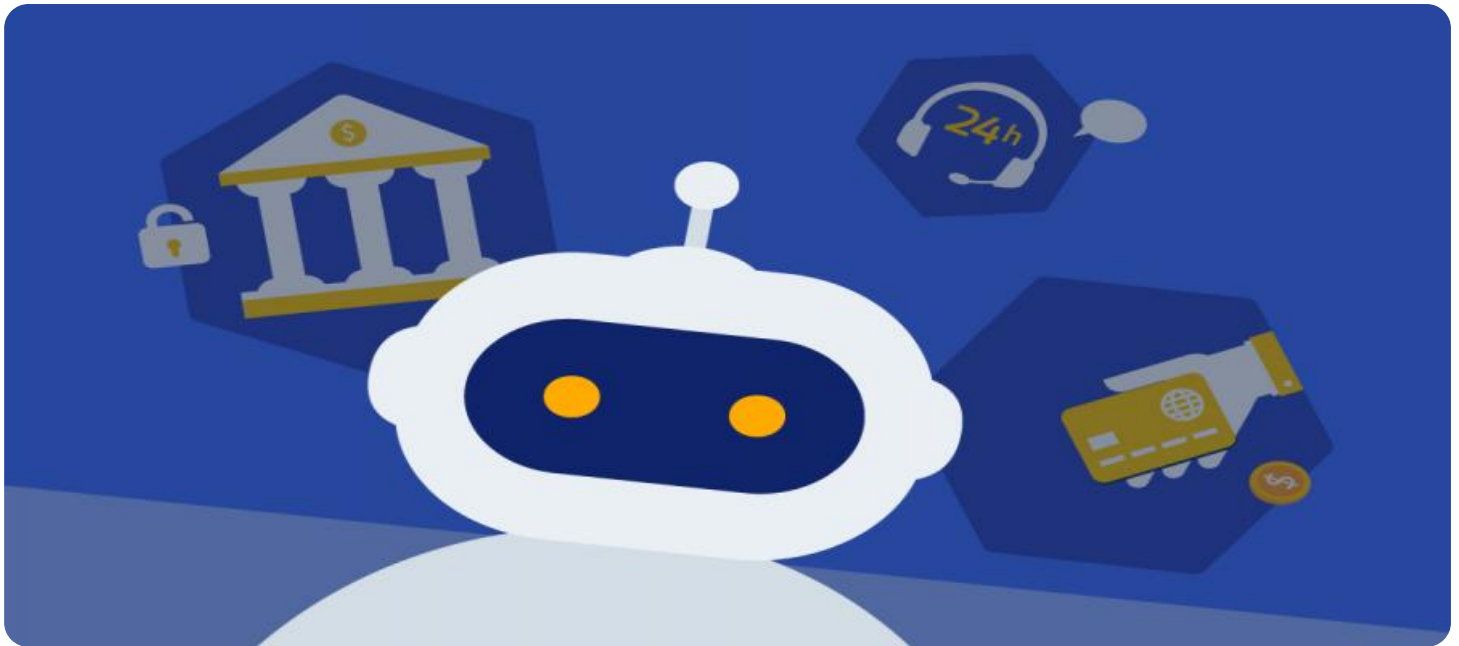


SAMPLE DATA

EXAMPLES OF PAYLOADS RELATED TO THE SERVICE

The logo consists of a large, bold, cyan-colored letter 'A' followed by a smaller, white, italicized letter 'i'. The 'A' has a thick, blocky appearance, while the 'i' is more slender and slanted.

AIMLPROGRAMMING.COM



AI-Enabled Personalized Banking Ayutthaya

AI-Enabled Personalized Banking Ayutthaya is a cutting-edge banking solution that leverages artificial intelligence (AI) to deliver tailored and personalized banking experiences to customers. By harnessing the power of AI algorithms and machine learning techniques, AI-Enabled Personalized Banking Ayutthaya offers several key benefits and applications for businesses:

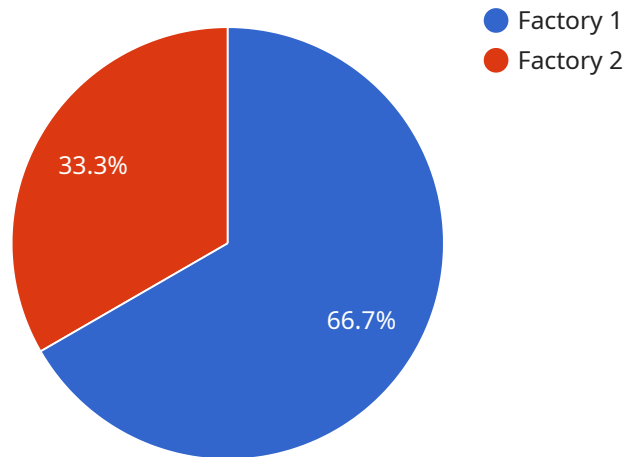
- 1. Personalized Banking Services:** AI-Enabled Personalized Banking Ayutthaya analyzes customer data, including transaction history, spending patterns, and financial goals, to create personalized banking recommendations and services. By understanding each customer's unique financial needs and preferences, businesses can offer tailored products, services, and advice to enhance customer satisfaction and loyalty.
- 2. Risk Management and Fraud Detection:** AI-Enabled Personalized Banking Ayutthaya utilizes AI algorithms to identify and mitigate financial risks. By analyzing customer behavior and transaction patterns, businesses can detect suspicious activities, prevent fraud, and protect customer accounts from unauthorized access or misuse.
- 3. Automated Customer Support:** AI-Enabled Personalized Banking Ayutthaya provides automated customer support through chatbots and virtual assistants. These AI-powered assistants can answer customer queries, resolve issues, and provide personalized guidance, offering 24/7 support and enhancing customer convenience.
- 4. Financial Planning and Budgeting:** AI-Enabled Personalized Banking Ayutthaya assists customers with financial planning and budgeting by analyzing their income, expenses, and savings goals. Businesses can provide personalized recommendations, budgeting tools, and financial insights to help customers manage their finances effectively and achieve their financial objectives.
- 5. Targeted Marketing and Cross-Selling:** AI-Enabled Personalized Banking Ayutthaya enables businesses to target marketing campaigns and cross-sell products and services based on customer preferences and financial profiles. By understanding customer needs and behaviors, businesses can deliver relevant offers and promotions, increasing customer engagement and driving revenue growth.

6. Compliance and Regulatory Adherence: AI-Enabled Personalized Banking Ayutthaya helps businesses comply with regulatory requirements and industry standards. By monitoring transactions and identifying suspicious activities, businesses can mitigate compliance risks and ensure the integrity of their financial operations.

AI-Enabled Personalized Banking Ayutthaya offers businesses a range of applications, including personalized banking services, risk management and fraud detection, automated customer support, financial planning and budgeting, targeted marketing and cross-selling, and compliance and regulatory adherence. By leveraging AI and machine learning, businesses can enhance customer experiences, improve operational efficiency, and drive growth in the banking sector.

API Payload Example

The payload showcases the transformative power of AI in revolutionizing the banking industry.



DATA VISUALIZATION OF THE PAYLOADS FOCUS

It introduces "AI-Enabled Personalized Banking Ayutthaya," a service that leverages AI algorithms and machine learning techniques to tailor banking experiences to each customer's unique needs. Through this innovative application of AI, businesses can provide personalized banking services, enhance risk management, offer automated customer support, assist with financial planning, target marketing campaigns, and ensure regulatory compliance. The payload demonstrates a deep understanding of AI's capabilities and its potential to empower businesses in the banking sector, enabling them to achieve unprecedented heights and deliver exceptional customer experiences.

Sample 1

```
▼ [
  ▼ {
    "device_name": "AI-Enabled Personalized Banking Ayutthaya",
    "sensor_id": "AYT56789",
    ▼ "data": {
      "sensor_type": "AI-Enabled Personalized Banking",
      "location": "Ayutthaya",
      ▼ "factories_and_plants": {
        ▼ "factory_1": {
          "name": "Factory 1",
          "location": "Ayutthaya Industrial Estate",
          "number_of_employees": 1200,
          ▼ "products": {
```

```
    "product_1": {
      "name": "Product 1",
      "description": "This is product 1.",
      "price": 120
    },
    "product_2": {
      "name": "Product 2",
      "description": "This is product 2.",
      "price": 220
    }
  },
  "factory_2": {
    "name": "Factory 2",
    "location": "Rojana Industrial Park",
    "number_of_employees": 600,
    "products": {
      "product_3": {
        "name": "Product 3",
        "description": "This is product 3.",
        "price": 320
      },
      "product_4": {
        "name": "Product 4",
        "description": "This is product 4.",
        "price": 420
      }
    }
  },
  "financial_data": {
    "revenue": 1200000,
    "expenses": 600000,
    "profit": 600000
  },
  "customer_data": {
    "customer_1": {
      "name": "Customer 1",
      "age": 35,
      "gender": "male",
      "occupation": "engineer"
    },
    "customer_2": {
      "name": "Customer 2",
      "age": 45,
      "gender": "female",
      "occupation": "teacher"
    }
  }
}
]
```

Sample 2

```
▼ [
  ▼ {
    "device_name": "AI-Enabled Personalized Banking Ayutthaya",
    "sensor_id": "AYT56789",
    ▼ "data": {
      "sensor_type": "AI-Enabled Personalized Banking",
      "location": "Ayutthaya",
      ▼ "factories_and_plants": {
        ▼ "factory_1": {
          "name": "Factory 1",
          "location": "Ayutthaya Industrial Estate",
          "number_of_employees": 1200,
          ▼ "products": {
            ▼ "product_1": {
              "name": "Product 1",
              "description": "This is product 1.",
              "price": 120
            },
            ▼ "product_2": {
              "name": "Product 2",
              "description": "This is product 2.",
              "price": 220
            }
          }
        },
        ▼ "factory_2": {
          "name": "Factory 2",
          "location": "Rojana Industrial Park",
          "number_of_employees": 600,
          ▼ "products": {
            ▼ "product_3": {
              "name": "Product 3",
              "description": "This is product 3.",
              "price": 320
            },
            ▼ "product_4": {
              "name": "Product 4",
              "description": "This is product 4.",
              "price": 420
            }
          }
        }
      },
      ▼ "financial_data": {
        "revenue": 1200000,
        "expenses": 600000,
        "profit": 600000
      },
      ▼ "customer_data": {
        ▼ "customer_1": {
          "name": "Customer 1",
          "age": 35,
          "gender": "male",
          "occupation": "engineer"
        },
        ▼ "customer_2": {
          "name": "Customer 2",

```

```
    "age": 45,  
    "gender": "female",  
    "occupation": "teacher"  
  }  
}  
}  
]  
]
```

Sample 3

```
▼ [  
  ▼ {  
    "device_name": "AI-Enabled Personalized Banking Ayutthaya",  
    "sensor_id": "AYT67890",  
    ▼ "data": {  
      "sensor_type": "AI-Enabled Personalized Banking",  
      "location": "Ayutthaya",  
      ▼ "factories_and_plants": {  
        ▼ "factory_1": {  
          "name": "Factory 1",  
          "location": "Ayutthaya Industrial Estate",  
          "number_of_employees": 1200,  
          ▼ "products": {  
            ▼ "product_1": {  
              "name": "Product 1",  
              "description": "This is product 1.",  
              "price": 120  
            },  
            ▼ "product_2": {  
              "name": "Product 2",  
              "description": "This is product 2.",  
              "price": 220  
            }  
          }  
        },  
        ▼ "factory_2": {  
          "name": "Factory 2",  
          "location": "Rojana Industrial Park",  
          "number_of_employees": 600,  
          ▼ "products": {  
            ▼ "product_3": {  
              "name": "Product 3",  
              "description": "This is product 3.",  
              "price": 320  
            },  
            ▼ "product_4": {  
              "name": "Product 4",  
              "description": "This is product 4.",  
              "price": 420  
            }  
          }  
        }  
      },  
      ▼ "financial_data": {
```

```

    "revenue": 1200000,
    "expenses": 600000,
    "profit": 600000
  },
  "customer_data": {
    "customer_1": {
      "name": "Customer 1",
      "age": 35,
      "gender": "male",
      "occupation": "engineer"
    },
    "customer_2": {
      "name": "Customer 2",
      "age": 45,
      "gender": "female",
      "occupation": "teacher"
    }
  }
}
]

```

Sample 4

```

[
  {
    "device_name": "AI-Enabled Personalized Banking Ayutthaya",
    "sensor_id": "AYT12345",
    "data": {
      "sensor_type": "AI-Enabled Personalized Banking",
      "location": "Ayutthaya",
      "factories_and_plants": {
        "factory_1": {
          "name": "Factory 1",
          "location": "Ayutthaya Industrial Estate",
          "number_of_employees": 1000,
          "products": {
            "product_1": {
              "name": "Product 1",
              "description": "This is product 1.",
              "price": 100
            },
            "product_2": {
              "name": "Product 2",
              "description": "This is product 2.",
              "price": 200
            }
          }
        },
        "factory_2": {
          "name": "Factory 2",
          "location": "Rojana Industrial Park",
          "number_of_employees": 500,
          "products": {
            "product_3": {

```



```
        "name": "Product 3",
        "description": "This is product 3.",
        "price": 300
    },
    "product_4": {
        "name": "Product 4",
        "description": "This is product 4.",
        "price": 400
    }
},
"financial_data": {
    "revenue": 1000000,
    "expenses": 500000,
    "profit": 500000
},
"customer_data": {
    "customer_1": {
        "name": "Customer 1",
        "age": 30,
        "gender": "male",
        "occupation": "engineer"
    },
    "customer_2": {
        "name": "Customer 2",
        "age": 40,
        "gender": "female",
        "occupation": "teacher"
    }
}
}
]
```

Meet Our Key Players in Project Management

Get to know the experienced leadership driving our project management forward: Sandeep Bharadwaj, a seasoned professional with a rich background in securities trading and technology entrepreneurship, and Stuart Dawsons, our Lead AI Engineer, spearheading innovation in AI solutions. Together, they bring decades of expertise to ensure the success of our projects.



Stuart Dawsons

Lead AI Engineer

Under Stuart Dawsons' leadership, our lead engineer, the company stands as a pioneering force in engineering groundbreaking AI solutions. Stuart brings to the table over a decade of specialized experience in machine learning and advanced AI solutions. His commitment to excellence is evident in our strategic influence across various markets. Navigating global landscapes, our core aim is to deliver inventive AI solutions that drive success internationally. With Stuart's guidance, expertise, and unwavering dedication to engineering excellence, we are well-positioned to continue setting new standards in AI innovation.



Sandeep Bharadwaj

Lead AI Consultant

As our lead AI consultant, Sandeep Bharadwaj brings over 29 years of extensive experience in securities trading and financial services across the UK, India, and Hong Kong. His expertise spans equities, bonds, currencies, and algorithmic trading systems. With leadership roles at DE Shaw, Tradition, and Tower Capital, Sandeep has a proven track record in driving business growth and innovation. His tenure at Tata Consultancy Services and Moody's Analytics further solidifies his proficiency in OTC derivatives and financial analytics. Additionally, as the founder of a technology company specializing in AI, Sandeep is uniquely positioned to guide and empower our team through its journey with our company. Holding an MBA from Manchester Business School and a degree in Mechanical Engineering from Manipal Institute of Technology, Sandeep's strategic insights and technical acumen will be invaluable assets in advancing our AI initiatives.