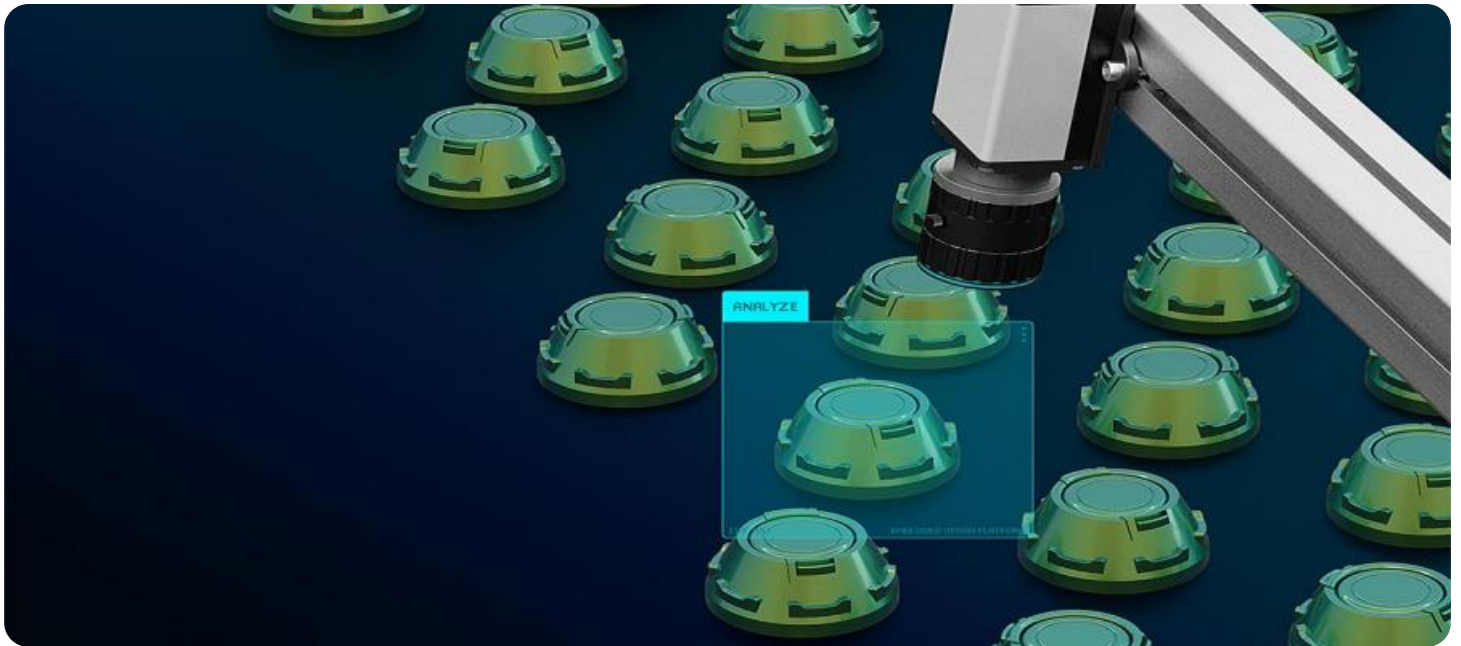


# SAMPLE DATA

EXAMPLES OF PAYLOADS RELATED TO THE SERVICE

The logo consists of a large, bold, cyan-colored letter 'A' followed by a smaller, white, italicized letter 'i'. The 'i' has a white dot. The background of the entire page is a dark, abstract pattern of glowing purple and blue lines, resembling a circuit board or a network diagram.

[AIMLPROGRAMMING.COM](http://AIMLPROGRAMMING.COM)



## AI-Enabled Quality Control for Nakhon Ratchasima Woodcarvings

AI-enabled quality control offers several key benefits and applications for businesses producing Nakhon Ratchasima woodcarvings:

1. **Automated Inspection:** AI algorithms can automatically inspect woodcarvings for defects, inconsistencies, or deviations from design specifications. This streamlines the quality control process, reduces manual labor, and ensures consistent product quality.
2. **Real-Time Monitoring:** AI-powered systems can monitor woodcarving production in real-time, detecting defects or anomalies as they occur. This enables early intervention, minimizing production errors and reducing the risk of defective products reaching customers.
3. **Objective and Accurate Assessment:** AI algorithms provide objective and accurate assessments of woodcarving quality, eliminating human subjectivity and bias. This ensures fair and consistent evaluation, leading to improved product quality and customer satisfaction.
4. **Increased Productivity:** By automating quality control tasks, businesses can free up skilled workers to focus on more complex or value-added activities. This increases overall productivity and efficiency in the woodcarving production process.
5. **Data-Driven Insights:** AI systems can collect and analyze data on woodcarving quality, providing valuable insights into production processes and areas for improvement. This data-driven approach enables businesses to make informed decisions and continuously enhance their quality control measures.

AI-enabled quality control empowers Nakhon Ratchasima woodcarving businesses to maintain high product quality, reduce production costs, and enhance customer satisfaction. By leveraging AI technology, businesses can streamline their quality control processes, improve efficiency, and gain a competitive edge in the global market.

# API Payload Example

The provided payload pertains to an AI-enabled quality control system designed to enhance the production of Nakhon Ratchasima woodcarvings.



DATA VISUALIZATION OF THE PAYLOADS FOCUS

This system utilizes AI technology to automate inspection tasks, ensuring consistent product quality. It implements real-time monitoring to detect defects early on, minimizing production errors. By leveraging AI, the system objectively assesses woodcarving quality, eliminating human subjectivity and bias. This automation frees up skilled workers for more complex tasks, increasing productivity. Furthermore, the system provides data-driven insights to continuously improve quality control measures and enhance customer satisfaction. By integrating AI technology, Nakhon Ratchasima woodcarving businesses can elevate their quality standards, reduce costs, and gain a competitive advantage in the global market.

## Sample 1

```
▼ [
  ▼ {
    "device_name": "AI-Enabled Quality Control System v2",
    "sensor_id": "AIQC54321",
    ▼ "data": {
      "sensor_type": "AI-Enabled Quality Control System",
      "location": "Nakhon Ratchasima Woodcarving Factory",
      "factory_name": "Nakhon Ratchasima Woodcarving Factory",
      "factory_address": "321 Main Street, Nakhon Ratchasima, Thailand",
      "factory_contact": "+66 89 876 5432",
      "factory_email": "support@nakhonratchasimawoodcarvings.com",
    }
  }
]
```

```

    "product_type": "Woodcarvings",
    "product_description": "Exquisite woodcarvings crafted from ethically sourced mahogany",
    "product_dimensions": "Customizable sizes and dimensions",
    "product_weight": "Varies based on size",
    "product_material": "Mahogany wood",
    "product_finish": "Natural or painted",
    "product_quality": "Exceptional quality, handcrafted by skilled artisans",
    "product_price": "Competitive pricing based on size and complexity",
    "product_quantity": "Limited stock available",
    "production_date": "2023-04-12",
    "production_quantity": 150,
    "production_status": "Completed",
    "production_notes": "Minor adjustments made to enhance product durability",
    "quality_control_results": {
      "pass": true,
      "fail": false,
      "notes": "All products met or exceeded quality standards"
    }
  }
}
]

```

## Sample 2

```

  [
    {
      "device_name": "AI-Enabled Quality Control System",
      "sensor_id": "AIQC54321",
      "data": {
        "sensor_type": "AI-Enabled Quality Control System",
        "location": "Nakhon Ratchasima Woodcarving Factory",
        "factory_name": "Nakhon Ratchasima Woodcarving Factory",
        "factory_address": "456 Elm Street, Nakhon Ratchasima, Thailand",
        "factory_contact": "+66 82 345 6789",
        "factory_email": "sales@nakhonratchasimawoodcarvings.com",
        "product_type": "Woodcarvings",
        "product_description": "Machine-crafted woodcarvings made from sustainable mahogany wood",
        "product_dimensions": "Various sizes and dimensions",
        "product_weight": "Varies depending on size",
        "product_material": "Mahogany wood",
        "product_finish": "Natural or painted",
        "product_quality": "Good quality, machine-crafted woodcarvings",
        "product_price": "Varies depending on size and complexity",
        "product_quantity": "Varies depending on availability",
        "production_date": "2023-04-12",
        "production_quantity": 150,
        "production_status": "Completed",
        "production_notes": "Minor defects found and corrected",
        "quality_control_results": {
          "pass": true,
          "fail": false,
          "notes": "Minor defects found and corrected"
        }
      }
    }
  ]

```

```
}  
}  
}  
]
```

### Sample 3

```
▼ [  
  ▼ {  
    "device_name": "AI-Enabled Quality Control System",  
    "sensor_id": "AIQC67890",  
    ▼ "data": {  
      "sensor_type": "AI-Enabled Quality Control System",  
      "location": "Nakhon Ratchasima Woodcarving Factory",  
      "factory_name": "Nakhon Ratchasima Woodcarving Factory",  
      "factory_address": "456 Elm Street, Nakhon Ratchasima, Thailand",  
      "factory_contact": "+66 81 987 6543",  
      "factory_email": "sales@nakhonratchasimawoodcarvings.com",  
      "product_type": "Woodcarvings",  
      "product_description": "Handcrafted woodcarvings made from sustainable mahogany wood",  
      "product_dimensions": "Various sizes and dimensions",  
      "product_weight": "Varies depending on size",  
      "product_material": "Mahogany wood",  
      "product_finish": "Natural or painted",  
      "product_quality": "High quality, handcrafted woodcarvings",  
      "product_price": "Varies depending on size and complexity",  
      "product_quantity": "Varies depending on availability",  
      "production_date": "2023-04-12",  
      "production_quantity": 150,  
      "production_status": "Completed",  
      "production_notes": "Minor issues with some of the carvings",  
      ▼ "quality_control_results": {  
        "pass": true,  
        "fail": false,  
        "notes": "Some minor defects found, but overall quality is good"  
      }  
    }  
  }  
]
```

### Sample 4

```
▼ [  
  ▼ {  
    "device_name": "AI-Enabled Quality Control System",  
    "sensor_id": "AIQC12345",  
    ▼ "data": {  
      "sensor_type": "AI-Enabled Quality Control System",  
      "location": "Nakhon Ratchasima Woodcarving Factory",  
      "factory_name": "Nakhon Ratchasima Woodcarving Factory",
```

```
"factory_address": "123 Main Street, Nakhon Ratchasima, Thailand",
"factory_contact": "+66 81 234 5678",
"factory_email": "info@nakhonratchasimawoodcarvings.com",
"product_type": "Woodcarvings",
"product_description": "Handcrafted woodcarvings made from sustainable teak
wood",
"product_dimensions": "Various sizes and dimensions",
"product_weight": "Varies depending on size",
"product_material": "Teak wood",
"product_finish": "Natural or stained",
"product_quality": "High quality, handcrafted woodcarvings",
"product_price": "Varies depending on size and complexity",
"product_quantity": "Varies depending on availability",
"production_date": "2023-03-08",
"production_quantity": 100,
"production_status": "In progress",
"production_notes": "No issues to report",
▼ "quality_control_results": {
  "pass": true,
  "fail": false,
  "notes": "No defects found"
}
}
]
```

## Meet Our Key Players in Project Management

Get to know the experienced leadership driving our project management forward: Sandeep Bharadwaj, a seasoned professional with a rich background in securities trading and technology entrepreneurship, and Stuart Dawsons, our Lead AI Engineer, spearheading innovation in AI solutions. Together, they bring decades of expertise to ensure the success of our projects.



### Stuart Dawsons

#### Lead AI Engineer

Under Stuart Dawsons' leadership, our lead engineer, the company stands as a pioneering force in engineering groundbreaking AI solutions. Stuart brings to the table over a decade of specialized experience in machine learning and advanced AI solutions. His commitment to excellence is evident in our strategic influence across various markets. Navigating global landscapes, our core aim is to deliver inventive AI solutions that drive success internationally. With Stuart's guidance, expertise, and unwavering dedication to engineering excellence, we are well-positioned to continue setting new standards in AI innovation.



### Sandeep Bharadwaj

#### Lead AI Consultant

As our lead AI consultant, Sandeep Bharadwaj brings over 29 years of extensive experience in securities trading and financial services across the UK, India, and Hong Kong. His expertise spans equities, bonds, currencies, and algorithmic trading systems. With leadership roles at DE Shaw, Tradition, and Tower Capital, Sandeep has a proven track record in driving business growth and innovation. His tenure at Tata Consultancy Services and Moody's Analytics further solidifies his proficiency in OTC derivatives and financial analytics. Additionally, as the founder of a technology company specializing in AI, Sandeep is uniquely positioned to guide and empower our team through its journey with our company. Holding an MBA from Manchester Business School and a degree in Mechanical Engineering from Manipal Institute of Technology, Sandeep's strategic insights and technical acumen will be invaluable assets in advancing our AI initiatives.