

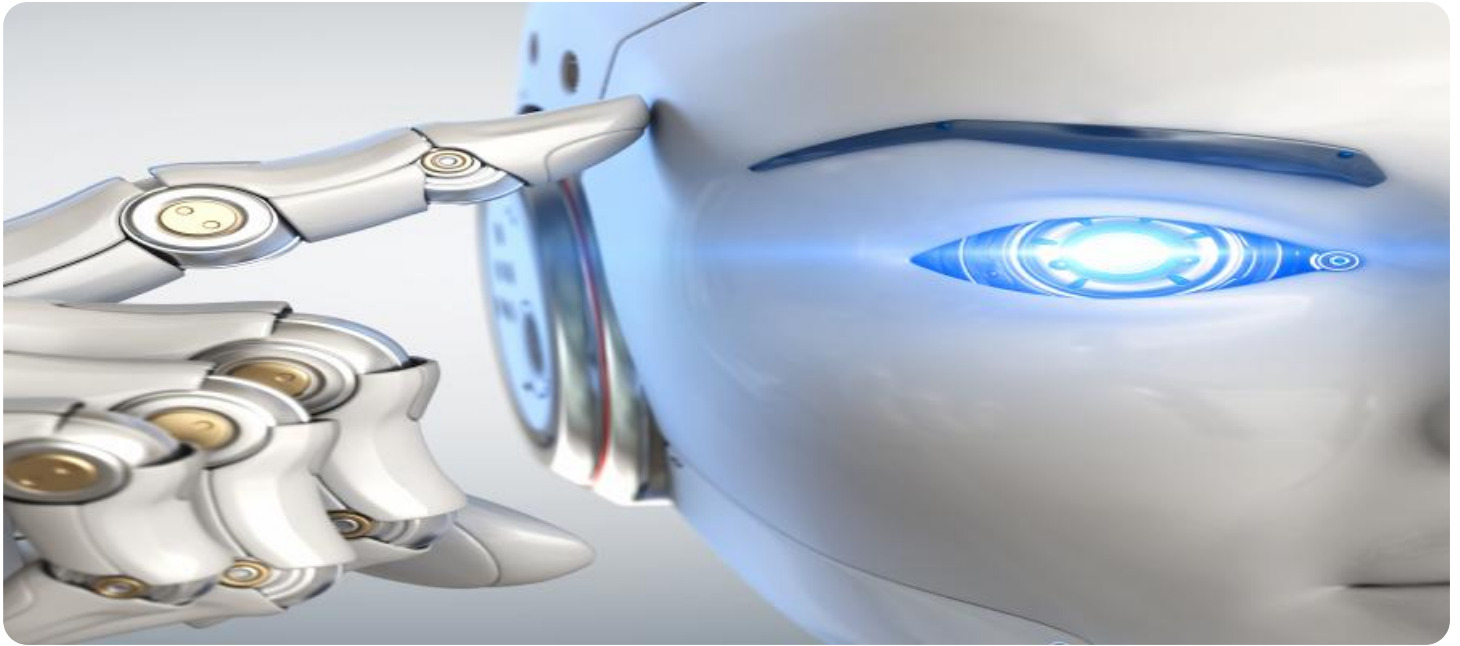
SAMPLE DATA

EXAMPLES OF PAYLOADS RELATED TO THE SERVICE



Ai

AIMLPROGRAMMING.COM



AI Food Menu Planning Rayong

AI Food Menu Planning Rayong is a powerful tool that enables businesses to automatically generate and optimize their food menus based on various factors such as customer preferences, dietary restrictions, and ingredient availability. By leveraging advanced algorithms and machine learning techniques, AI Food Menu Planning Rayong offers several key benefits and applications for businesses:

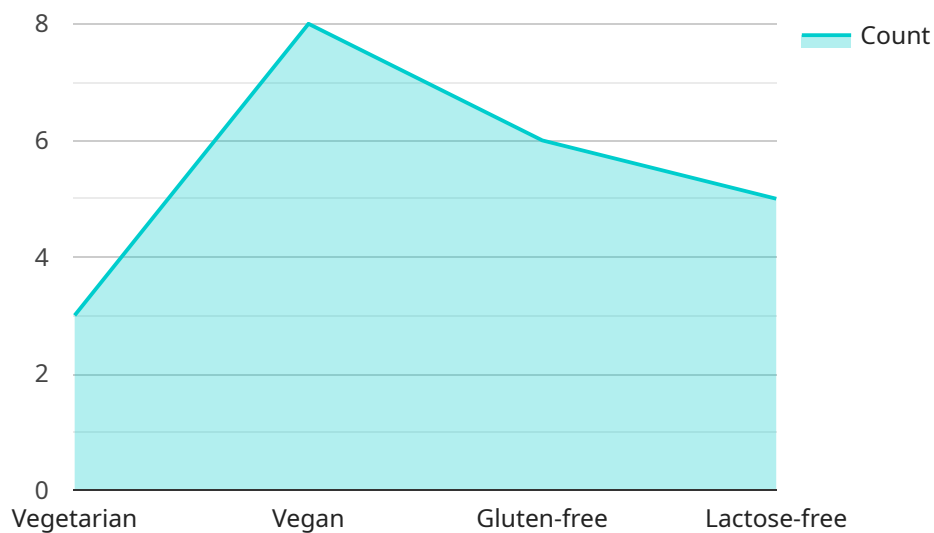
- 1. Personalized Menu Recommendations:** AI Food Menu Planning Rayong can analyze customer data, including past orders, reviews, and demographics, to generate personalized menu recommendations that cater to individual preferences and dietary needs. By providing tailored menu options, businesses can enhance customer satisfaction and loyalty.
- 2. Optimized Menu Design:** AI Food Menu Planning Rayong can optimize menu design by analyzing factors such as item popularity, profitability, and nutritional value. By presenting menu items in a visually appealing and informative manner, businesses can increase sales and reduce customer decision-making time.
- 3. Ingredient Management:** AI Food Menu Planning Rayong can help businesses manage their ingredients effectively by identifying potential shortages and recommending alternative ingredients based on availability and cost. By optimizing ingredient usage, businesses can minimize waste and ensure menu consistency.
- 4. Cost Control:** AI Food Menu Planning Rayong can analyze menu items and ingredient costs to identify opportunities for cost optimization. By suggesting menu adjustments and ingredient substitutions, businesses can reduce food costs and improve profitability.
- 5. Dietary Compliance:** AI Food Menu Planning Rayong can assist businesses in ensuring compliance with dietary regulations and allergen labeling requirements. By automatically identifying and labeling menu items based on ingredients, businesses can prevent allergic reactions and build trust with customers.
- 6. Data-Driven Insights:** AI Food Menu Planning Rayong provides businesses with valuable data and insights into customer preferences, menu performance, and ingredient usage. By analyzing this

data, businesses can make informed decisions to improve menu offerings, optimize operations, and drive growth.

AI Food Menu Planning Rayong offers businesses a wide range of applications, including personalized menu recommendations, optimized menu design, ingredient management, cost control, dietary compliance, and data-driven insights. By leveraging AI, businesses can enhance customer experiences, improve operational efficiency, and maximize profitability in the food and beverage industry.

API Payload Example

The provided payload introduces AI Food Menu Planning Rayong, an advanced tool that utilizes machine learning algorithms to revolutionize menu creation and management.



DATA VISUALIZATION OF THE PAYLOADS FOCUS

It empowers businesses to optimize their menu offerings, enhance customer experiences, and drive growth. By leveraging advanced algorithms and machine learning techniques, AI Food Menu Planning Rayong provides businesses with data-driven insights into customer preferences, dietary restrictions, and market trends. This enables them to create personalized and tailored menus that meet the evolving needs of their customers. The payload highlights the key benefits and applications of this technology, showcasing how it can help businesses overcome challenges, improve operational efficiency, and maximize profitability in the food and beverage industry.

Sample 1

```
▼ [
  ▼ {
    "device_name": "AI Food Menu Planning Rayong",
    "sensor_id": "AI-FMP-RYG-2",
    ▼ "data": {
      "sensor_type": "AI Food Menu Planning",
      "location": "Rayong",
      "industry": "Food and Beverage",
      "application": "Menu Planning",
      "factory_type": "Food Processing Plant",
      "factory_size": "Medium",
      "number_of_employees": 250,
```

```

    "number_of_shifts": 2,
    "number_of_meals_per_day": 2,
    "dietary_restrictions": [
      "vegetarian",
      "gluten-free",
      "low-sodium"
    ],
    "food_preferences": [
      "Thai",
      "Western",
      "Japanese",
      "Korean"
    ],
    "budget_per_meal": 75,
    "target_calories_per_meal": 400,
    "target_protein_per_meal": 15,
    "target_carbohydrates_per_meal": 40,
    "target_fat_per_meal": 15
  }
}
]

```

Sample 2

```

▼ [
  ▼ {
    "device_name": "AI Food Menu Planning Rayong",
    "sensor_id": "AI-FMP-RYG-002",
    "data": {
      "sensor_type": "AI Food Menu Planning",
      "location": "Rayong",
      "industry": "Food and Beverage",
      "application": "Menu Planning",
      "factory_type": "Food Processing Plant",
      "factory_size": "Medium",
      "number_of_employees": 300,
      "number_of_shifts": 2,
      "number_of_meals_per_day": 2,
      "dietary_restrictions": [
        "vegetarian",
        "gluten-free",
        "low-sodium"
      ],
      "food_preferences": [
        "Thai",
        "Western",
        "Japanese",
        "Korean"
      ],
      "budget_per_meal": 80,
      "target_calories_per_meal": 450,
      "target_protein_per_meal": 15,
      "target_carbohydrates_per_meal": 40,
      "target_fat_per_meal": 15
    }
  }
]

```

```
]
```

Sample 3

```
▼ [
  ▼ {
    "device_name": "AI Food Menu Planning Rayong",
    "sensor_id": "AI-FMP-RYG-2",
    ▼ "data": {
      "sensor_type": "AI Food Menu Planning",
      "location": "Rayong",
      "industry": "Food and Beverage",
      "application": "Menu Planning",
      "factory_type": "Food Processing Plant",
      "factory_size": "Medium",
      "number_of_employees": 250,
      "number_of_shifts": 2,
      "number_of_meals_per_day": 2,
      ▼ "dietary_restrictions": [
        "vegetarian",
        "gluten-free",
        "low-sodium"
      ],
      ▼ "food_preferences": [
        "Thai",
        "Western",
        "Japanese",
        "Korean"
      ],
      "budget_per_meal": 80,
      "target_calories_per_meal": 400,
      "target_protein_per_meal": 15,
      "target_carbohydrates_per_meal": 40,
      "target_fat_per_meal": 15
    }
  }
]
```

Sample 4

```
▼ [
  ▼ {
    "device_name": "AI Food Menu Planning Rayong",
    "sensor_id": "AI-FMP-RYG",
    ▼ "data": {
      "sensor_type": "AI Food Menu Planning",
      "location": "Rayong",
      "industry": "Food and Beverage",
      "application": "Menu Planning",
      "factory_type": "Food Processing Plant",
      "factory_size": "Large",
      "number_of_employees": 500,
```

```
"number_of_shifts": 3,  
"number_of_meals_per_day": 3,  
▼ "dietary_restrictions": [  
  "vegetarian",  
  "vegan",  
  "gluten-free",  
  "lactose-free"  
],  
▼ "food_preferences": [  
  "Thai",  
  "Chinese",  
  "Western",  
  "Japanese"  
],  
"budget_per_meal": 100,  
"target_calories_per_meal": 500,  
"target_protein_per_meal": 20,  
"target_carbohydrates_per_meal": 50,  
"target_fat_per_meal": 20  
}  
}
```

```
]
```

Meet Our Key Players in Project Management

Get to know the experienced leadership driving our project management forward: Sandeep Bharadwaj, a seasoned professional with a rich background in securities trading and technology entrepreneurship, and Stuart Dawsons, our Lead AI Engineer, spearheading innovation in AI solutions. Together, they bring decades of expertise to ensure the success of our projects.



Stuart Dawsons

Lead AI Engineer

Under Stuart Dawsons' leadership, our lead engineer, the company stands as a pioneering force in engineering groundbreaking AI solutions. Stuart brings to the table over a decade of specialized experience in machine learning and advanced AI solutions. His commitment to excellence is evident in our strategic influence across various markets. Navigating global landscapes, our core aim is to deliver inventive AI solutions that drive success internationally. With Stuart's guidance, expertise, and unwavering dedication to engineering excellence, we are well-positioned to continue setting new standards in AI innovation.



Sandeep Bharadwaj

Lead AI Consultant

As our lead AI consultant, Sandeep Bharadwaj brings over 29 years of extensive experience in securities trading and financial services across the UK, India, and Hong Kong. His expertise spans equities, bonds, currencies, and algorithmic trading systems. With leadership roles at DE Shaw, Tradition, and Tower Capital, Sandeep has a proven track record in driving business growth and innovation. His tenure at Tata Consultancy Services and Moody's Analytics further solidifies his proficiency in OTC derivatives and financial analytics. Additionally, as the founder of a technology company specializing in AI, Sandeep is uniquely positioned to guide and empower our team through its journey with our company. Holding an MBA from Manchester Business School and a degree in Mechanical Engineering from Manipal Institute of Technology, Sandeep's strategic insights and technical acumen will be invaluable assets in advancing our AI initiatives.