

SAMPLE DATA

EXAMPLES OF PAYLOADS RELATED TO THE SERVICE



Ai

AIMLPROGRAMMING.COM



AI Nakhon Ratchasima Forest Fire Detection

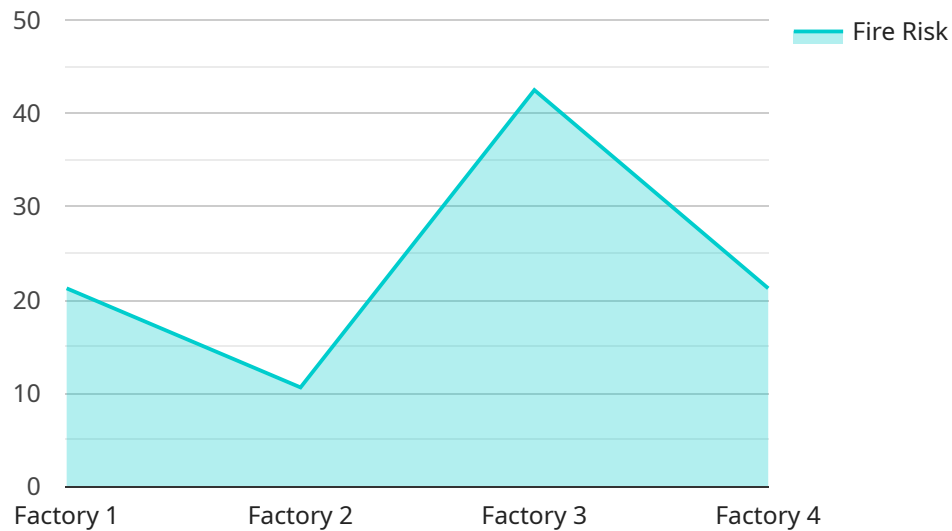
AI Nakhon Ratchasima Forest Fire Detection is a powerful tool that can be used to detect and monitor forest fires in real-time. This technology can be used by businesses to protect their assets, reduce the risk of damage, and improve safety. Here are some of the ways that AI Nakhon Ratchasima Forest Fire Detection can be used from a business perspective:

1. **Early detection:** AI Nakhon Ratchasima Forest Fire Detection can be used to detect forest fires at an early stage, when they are still small and easy to control. This can help businesses to minimize the damage caused by fires and reduce the risk of them spreading to populated areas.
2. **Real-time monitoring:** AI Nakhon Ratchasima Forest Fire Detection can be used to monitor forest fires in real-time, providing businesses with up-to-date information on the location and size of fires. This information can be used to make informed decisions about how to respond to fires and protect assets.
3. **Improved safety:** AI Nakhon Ratchasima Forest Fire Detection can help to improve safety by providing businesses with early warning of forest fires. This information can be used to evacuate employees and visitors from affected areas and to take steps to protect property.
4. **Reduced costs:** AI Nakhon Ratchasima Forest Fire Detection can help businesses to reduce costs by minimizing the damage caused by forest fires. This can save businesses money on repairs, replacements, and insurance premiums.

AI Nakhon Ratchasima Forest Fire Detection is a valuable tool that can be used by businesses to protect their assets, reduce the risk of damage, and improve safety. By using this technology, businesses can help to ensure that their operations are not disrupted by forest fires.

API Payload Example

The payload is a comprehensive solution for forest fire detection using artificial intelligence (AI).



DATA VISUALIZATION OF THE PAYLOADS FOCUS

It is designed to address the challenges of forest fires in Nakhon Ratchasima, Thailand, which pose significant threats to businesses, communities, and the environment. The solution leverages AI algorithms, data analysis techniques, and a real-time monitoring platform to detect, monitor, and provide early warning of forest fires. By leveraging this solution, businesses and organizations can proactively respond to and mitigate the risks posed by forest fires, safeguarding assets, protecting human lives, and preserving valuable natural resources in the region.

Sample 1

```
▼ [
  ▼ {
    "device_name": "AI Nakhon Ratchasima Forest Fire Detection",
    "sensor_id": "AI-FRD54321",
    ▼ "data": {
      "sensor_type": "Forest Fire Detection",
      "location": "Warehouse",
      "fire_risk": 70,
      "temperature": 32,
      "humidity": 60,
      "wind_speed": 15,
      "wind_direction": "South",
      "vegetation_type": "Grassland",
      "industry": "Agriculture",
```

```
    "application": "Wildfire Detection",
    "calibration_date": "2023-04-12",
    "calibration_status": "Pending"
  }
]
```

Sample 2

```
▼ [
  ▼ {
    "device_name": "AI Nakhon Ratchasima Forest Fire Detection",
    "sensor_id": "AI-FRD67890",
    ▼ "data": {
      "sensor_type": "Forest Fire Detection",
      "location": "Warehouse",
      "fire_risk": 70,
      "temperature": 32,
      "humidity": 60,
      "wind_speed": 15,
      "wind_direction": "South",
      "vegetation_type": "Grassland",
      "industry": "Agriculture",
      "application": "Forest Fire Prevention",
      "calibration_date": "2023-04-12",
      "calibration_status": "Pending"
    }
  }
]
```

Sample 3

```
▼ [
  ▼ {
    "device_name": "AI Nakhon Ratchasima Forest Fire Detection",
    "sensor_id": "AI-FRD67890",
    ▼ "data": {
      "sensor_type": "Forest Fire Detection",
      "location": "Warehouse",
      "fire_risk": 70,
      "temperature": 38,
      "humidity": 45,
      "wind_speed": 15,
      "wind_direction": "South",
      "vegetation_type": "Grassland",
      "industry": "Agriculture",
      "application": "Wildfire Prevention",
      "calibration_date": "2023-04-12",
      "calibration_status": "Expired"
    }
  }
]
```

```
]
```

Sample 4

```
▼ [
  ▼ {
    "device_name": "AI Nakhon Ratchasima Forest Fire Detection",
    "sensor_id": "AI-FRD12345",
    ▼ "data": {
      "sensor_type": "Forest Fire Detection",
      "location": "Factory",
      "fire_risk": 85,
      "temperature": 35,
      "humidity": 50,
      "wind_speed": 10,
      "wind_direction": "North",
      "vegetation_type": "Forest",
      "industry": "Manufacturing",
      "application": "Forest Fire Detection",
      "calibration_date": "2023-03-08",
      "calibration_status": "Valid"
    }
  }
]
```

Meet Our Key Players in Project Management

Get to know the experienced leadership driving our project management forward: Sandeep Bharadwaj, a seasoned professional with a rich background in securities trading and technology entrepreneurship, and Stuart Dawsons, our Lead AI Engineer, spearheading innovation in AI solutions. Together, they bring decades of expertise to ensure the success of our projects.



Stuart Dawsons

Lead AI Engineer

Under Stuart Dawsons' leadership, our lead engineer, the company stands as a pioneering force in engineering groundbreaking AI solutions. Stuart brings to the table over a decade of specialized experience in machine learning and advanced AI solutions. His commitment to excellence is evident in our strategic influence across various markets. Navigating global landscapes, our core aim is to deliver inventive AI solutions that drive success internationally. With Stuart's guidance, expertise, and unwavering dedication to engineering excellence, we are well-positioned to continue setting new standards in AI innovation.



Sandeep Bharadwaj

Lead AI Consultant

As our lead AI consultant, Sandeep Bharadwaj brings over 29 years of extensive experience in securities trading and financial services across the UK, India, and Hong Kong. His expertise spans equities, bonds, currencies, and algorithmic trading systems. With leadership roles at DE Shaw, Tradition, and Tower Capital, Sandeep has a proven track record in driving business growth and innovation. His tenure at Tata Consultancy Services and Moody's Analytics further solidifies his proficiency in OTC derivatives and financial analytics. Additionally, as the founder of a technology company specializing in AI, Sandeep is uniquely positioned to guide and empower our team through its journey with our company. Holding an MBA from Manchester Business School and a degree in Mechanical Engineering from Manipal Institute of Technology, Sandeep's strategic insights and technical acumen will be invaluable assets in advancing our AI initiatives.