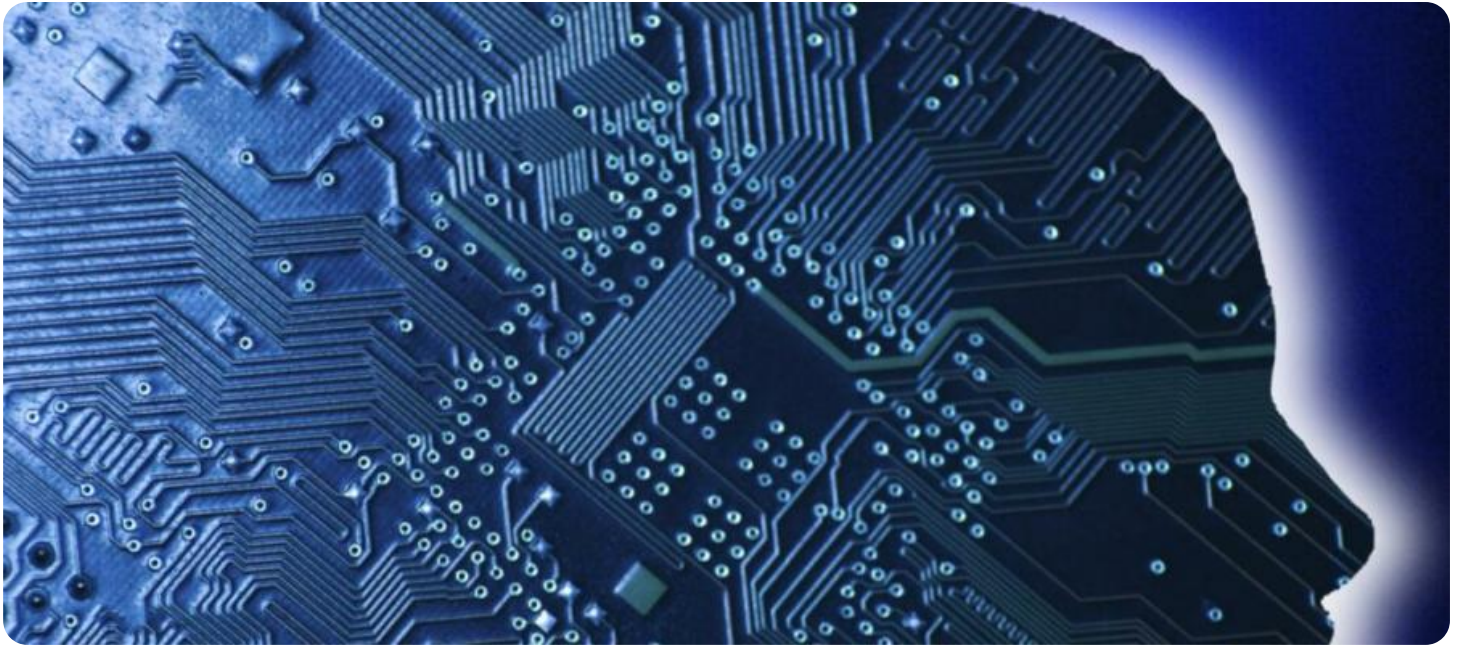


SAMPLE DATA

EXAMPLES OF PAYLOADS RELATED TO THE SERVICE

Ai

AIMLPROGRAMMING.COM



AI Plastic Molding Optimization Bangkok

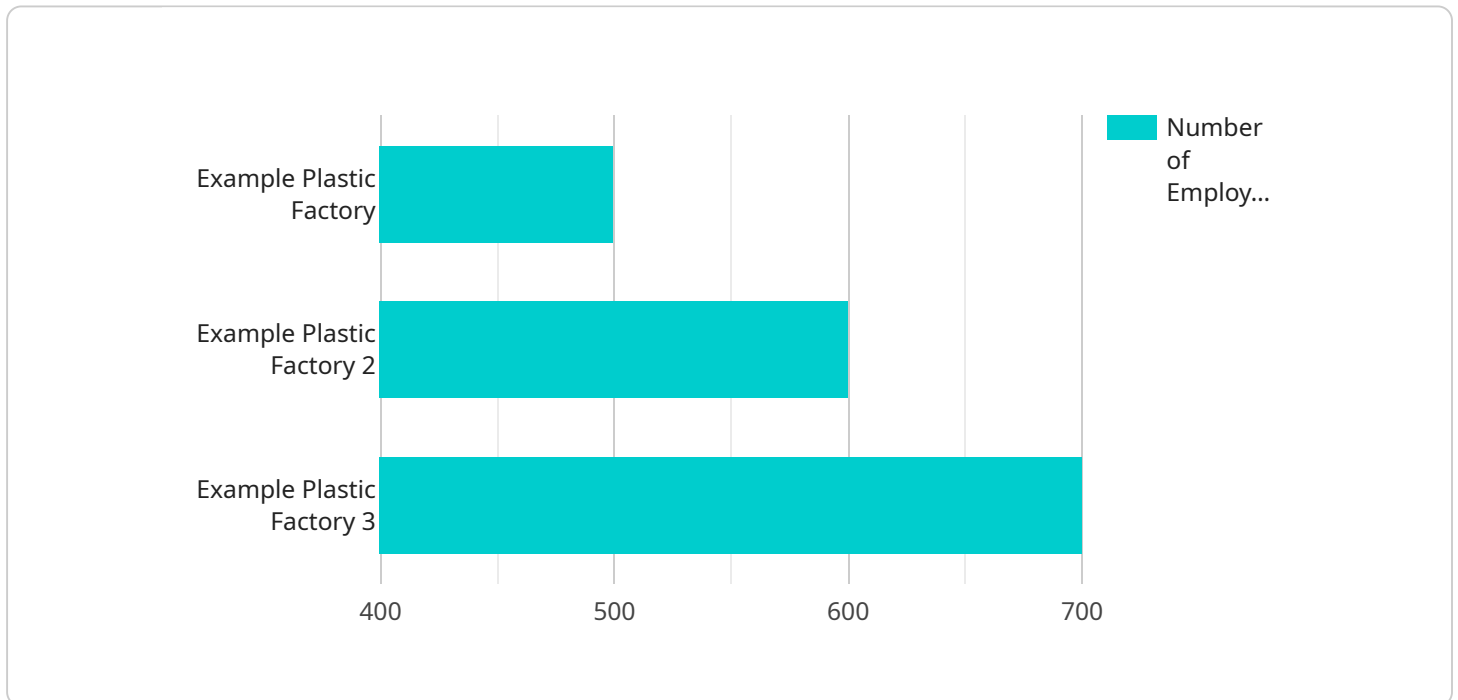
AI Plastic Molding Optimization Bangkok is a powerful technology that enables businesses to optimize the plastic molding process, resulting in improved product quality, reduced production costs, and increased efficiency. By leveraging advanced algorithms and machine learning techniques, AI Plastic Molding Optimization offers several key benefits and applications for businesses in Bangkok:

- 1. Improved Product Quality:** AI Plastic Molding Optimization can analyze large amounts of data to identify and eliminate defects in the plastic molding process. This results in higher quality products that meet customer specifications and reduce the risk of product recalls.
- 2. Reduced Production Costs:** AI Plastic Molding Optimization can optimize process parameters such as temperature, pressure, and cooling time to reduce energy consumption and material waste. This leads to lower production costs and increased profitability.
- 3. Increased Efficiency:** AI Plastic Molding Optimization can automate repetitive tasks and provide real-time monitoring of the molding process. This frees up operators to focus on more complex tasks and improves overall efficiency.
- 4. Predictive Maintenance:** AI Plastic Molding Optimization can monitor equipment performance and predict potential failures. This enables businesses to schedule maintenance proactively, reducing downtime and ensuring uninterrupted production.
- 5. Data-Driven Decision Making:** AI Plastic Molding Optimization provides businesses with valuable data and insights into the molding process. This data can be used to make informed decisions about process improvements, product design, and resource allocation.

AI Plastic Molding Optimization is a valuable tool for businesses in Bangkok looking to improve their plastic molding operations. By leveraging the power of AI, businesses can achieve higher quality products, reduce production costs, increase efficiency, and make data-driven decisions to optimize their processes.

API Payload Example

The payload pertains to "AI Plastic Molding Optimization Bangkok," a comprehensive solution that leverages artificial intelligence and machine learning to revolutionize the plastic molding industry in Bangkok.



DATA VISUALIZATION OF THE PAYLOADS FOCUS

It empowers businesses to optimize their molding processes, resulting in enhanced product quality, reduced costs, and improved efficiency.

The document highlights the capabilities and benefits of this AI-powered solution, showcasing how it addresses the unique challenges of the plastic molding industry in Bangkok. Through its expertise in artificial intelligence and machine learning, the solution provides tailored solutions that drive tangible results. It offers a deep understanding of the molding process and delivers pragmatic solutions that transform business operations in the region.

Sample 1

```
▼ [
  ▼ {
    "device_name": "AI Plastic Molding Optimization Bangkok",
    "sensor_id": "AI_PLASTIC_MOLDING_OPTIMIZATION_BANGKOK_67890",
    ▼ "data": {
      "sensor_type": "AI Plastic Molding Optimization",
      "location": "Factory",
      "factory_name": "Example Plastic Factory 2",
      "factory_address": "456 Example Street, Bangkok, Thailand",
      "factory_size": "15,000 square meters",
```

```

    "number_of_employees": "600",
    "number_of_machines": "120",
    "plastic_types_processed": "PP, PE, PET, ABS",
    "molding_processes": "Injection molding, blow molding, extrusion,
thermoforming",
    "optimization_goals": "Reduce cycle time, improve product quality, reduce energy
consumption, increase production capacity",
    "optimization_results": "Cycle time reduced by 15%, product quality improved by
10%, energy consumption reduced by 20%, production capacity increased by 10%",
    "ai_algorithms_used": "Machine learning, deep learning, computer vision, natural
language processing",
    "ai_software_used": "TensorFlow, PyTorch, OpenCV, Keras",
    "ai_hardware_used": "NVIDIA GPUs, Intel Xeon CPUs, AWS EC2 instances",
    "data_sources_used": "Machine data, sensor data, process data, customer
feedback",
    "data_management_platform_used": "Amazon S3, AWS Glue, Azure Data Lake",
    "ai_model_training_platform_used": "AWS SageMaker, Azure Machine Learning",
    "ai_model_deployment_platform_used": "AWS Lambda, AWS Fargate, Azure Functions",
    "ai_model_monitoring_platform_used": "AWS CloudWatch, AWS Health, Azure
Monitor",
    "ai_model_governance_platform_used": "AWS Data Governance, AWS Security Hub,
Azure Governance",
    "ai_model_impact_analysis_platform_used": "AWS Cost Explorer, AWS Trusted
Advisor, Azure Cost Management",
    "ai_model_risk_assessment_platform_used": "AWS Risk and Compliance, AWS Security
Hub, Azure Security Center",
    "ai_model_ethical_review_platform_used": "AWS AI Ethics, AWS AI Fairness, Azure
AI Ethics"
  }
}
]

```

Sample 2

```

▼ [
  ▼ {
    "device_name": "AI Plastic Molding Optimization Bangkok",
    "sensor_id": "AI_PLASTIC_MOLDING_OPTIMIZATION_BANGKOK_67890",
    ▼ "data": {
      "sensor_type": "AI Plastic Molding Optimization",
      "location": "Factory",
      "factory_name": "Example Plastic Factory 2",
      "factory_address": "456 Example Street, Bangkok, Thailand",
      "factory_size": "15,000 square meters",
      "number_of_employees": "600",
      "number_of_machines": "120",
      "plastic_types_processed": "PP, PE, PET, ABS",
      "molding_processes": "Injection molding, blow molding, extrusion,
thermoforming",
      "optimization_goals": "Reduce cycle time, improve product quality, reduce energy
consumption, increase production capacity",
      "optimization_results": "Cycle time reduced by 15%, product quality improved by
10%, energy consumption reduced by 20%, production capacity increased by 10%",
      "ai_algorithms_used": "Machine learning, deep learning, computer vision, natural
language processing",
    }
  }
]

```

```

    "ai_software_used": "TensorFlow, PyTorch, OpenCV, Keras",
    "ai_hardware_used": "NVIDIA GPUs, Intel Xeon CPUs, AWS EC2 instances",
    "data_sources_used": "Machine data, sensor data, process data, customer feedback",
    "data_management_platform_used": "Amazon S3, AWS Glue, Azure Data Lake",
    "ai_model_training_platform_used": "AWS SageMaker, Azure Machine Learning",
    "ai_model_deployment_platform_used": "AWS Lambda, AWS Fargate, Azure Functions",
    "ai_model_monitoring_platform_used": "AWS CloudWatch, AWS Health, Azure Monitor",
    "ai_model_governance_platform_used": "AWS Data Governance, AWS Security Hub, Azure Governance",
    "ai_model_impact_analysis_platform_used": "AWS Cost Explorer, AWS Trusted Advisor, Azure Cost Management",
    "ai_model_risk_assessment_platform_used": "AWS Risk and Compliance, AWS Security Hub, Azure Security Center",
    "ai_model_ethical_review_platform_used": "AWS AI Ethics, AWS AI Fairness, Azure AI Ethics"
  }
}
]

```

Sample 3

```

[
  {
    "device_name": "AI Plastic Molding Optimization Bangkok",
    "sensor_id": "AI_PLASTIC_MOLDING_OPTIMIZATION_BANGKOK_54321",
    "data": {
      "sensor_type": "AI Plastic Molding Optimization",
      "location": "Factory",
      "factory_name": "Example Plastic Factory 2",
      "factory_address": "456 Example Street, Bangkok, Thailand",
      "factory_size": "15,000 square meters",
      "number_of_employees": "600",
      "number_of_machines": "120",
      "plastic_types_processed": "PP, PE, PET, ABS",
      "molding_processes": "Injection molding, blow molding, extrusion, thermoforming",
      "optimization_goals": "Reduce cycle time, improve product quality, reduce energy consumption, increase production capacity",
      "optimization_results": "Cycle time reduced by 15%, product quality improved by 10%, energy consumption reduced by 20%, production capacity increased by 10%",
      "ai_algorithms_used": "Machine learning, deep learning, computer vision, natural language processing",
      "ai_software_used": "TensorFlow, PyTorch, OpenCV, scikit-learn",
      "ai_hardware_used": "NVIDIA GPUs, Intel Xeon CPUs, AWS EC2 instances",
      "data_sources_used": "Machine data, sensor data, process data, customer feedback",
      "data_management_platform_used": "Amazon S3, AWS Glue, Azure Data Lake",
      "ai_model_training_platform_used": "AWS SageMaker, Azure Machine Learning",
      "ai_model_deployment_platform_used": "AWS Lambda, AWS Fargate, Azure Functions",
      "ai_model_monitoring_platform_used": "AWS CloudWatch, AWS Health, Azure Monitor",
      "ai_model_governance_platform_used": "AWS Data Governance, AWS Security Hub, Azure Governance",
    }
  }
]

```

```

    "ai_model_impact_analysis_platform_used": "AWS Cost Explorer, AWS Trusted
    Advisor, Azure Cost Management",
    "ai_model_risk_assessment_platform_used": "AWS Risk and Compliance, AWS Security
    Hub, Azure Security Center",
    "ai_model_ethical_review_platform_used": "AWS AI Ethics, AWS AI Fairness, Azure
    AI Ethics"
  }
}
]

```

Sample 4

```

▼ [
  ▼ {
    "device_name": "AI Plastic Molding Optimization Bangkok",
    "sensor_id": "AI_PLASTIC_MOLDING_OPTIMIZATION_BANGKOK_12345",
    ▼ "data": {
      "sensor_type": "AI Plastic Molding Optimization",
      "location": "Factory",
      "factory_name": "Example Plastic Factory",
      "factory_address": "123 Example Street, Bangkok, Thailand",
      "factory_size": "10,000 square meters",
      "number_of_employees": "500",
      "number_of_machines": "100",
      "plastic_types_processed": "PP, PE, PET",
      "molding_processes": "Injection molding, blow molding, extrusion",
      "optimization_goals": "Reduce cycle time, improve product quality, reduce energy
      consumption",
      "optimization_results": "Cycle time reduced by 10%, product quality improved by
      5%, energy consumption reduced by 15%",
      "ai_algorithms_used": "Machine learning, deep learning, computer vision",
      "ai_software_used": "TensorFlow, PyTorch, OpenCV",
      "ai_hardware_used": "NVIDIA GPUs, Intel Xeon CPUs",
      "data_sources_used": "Machine data, sensor data, process data",
      "data_management_platform_used": "Amazon S3, AWS Glue",
      "ai_model_training_platform_used": "AWS SageMaker",
      "ai_model_deployment_platform_used": "AWS Lambda, AWS Fargate",
      "ai_model_monitoring_platform_used": "AWS CloudWatch, AWS Health",
      "ai_model_governance_platform_used": "AWS Data Governance, AWS Security Hub",
      "ai_model_impact_analysis_platform_used": "AWS Cost Explorer, AWS Trusted
      Advisor",
      "ai_model_risk_assessment_platform_used": "AWS Risk and Compliance, AWS Security
      Hub",
      "ai_model_ethical_review_platform_used": "AWS AI Ethics, AWS AI Fairness"
    }
  }
]

```

Meet Our Key Players in Project Management

Get to know the experienced leadership driving our project management forward: Sandeep Bharadwaj, a seasoned professional with a rich background in securities trading and technology entrepreneurship, and Stuart Dawsons, our Lead AI Engineer, spearheading innovation in AI solutions. Together, they bring decades of expertise to ensure the success of our projects.



Stuart Dawsons

Lead AI Engineer

Under Stuart Dawsons' leadership, our lead engineer, the company stands as a pioneering force in engineering groundbreaking AI solutions. Stuart brings to the table over a decade of specialized experience in machine learning and advanced AI solutions. His commitment to excellence is evident in our strategic influence across various markets. Navigating global landscapes, our core aim is to deliver inventive AI solutions that drive success internationally. With Stuart's guidance, expertise, and unwavering dedication to engineering excellence, we are well-positioned to continue setting new standards in AI innovation.



Sandeep Bharadwaj

Lead AI Consultant

As our lead AI consultant, Sandeep Bharadwaj brings over 29 years of extensive experience in securities trading and financial services across the UK, India, and Hong Kong. His expertise spans equities, bonds, currencies, and algorithmic trading systems. With leadership roles at DE Shaw, Tradition, and Tower Capital, Sandeep has a proven track record in driving business growth and innovation. His tenure at Tata Consultancy Services and Moody's Analytics further solidifies his proficiency in OTC derivatives and financial analytics. Additionally, as the founder of a technology company specializing in AI, Sandeep is uniquely positioned to guide and empower our team through its journey with our company. Holding an MBA from Manchester Business School and a degree in Mechanical Engineering from Manipal Institute of Technology, Sandeep's strategic insights and technical acumen will be invaluable assets in advancing our AI initiatives.