

SAMPLE DATA

EXAMPLES OF PAYLOADS RELATED TO THE SERVICE

The logo consists of a large, bold, cyan-colored letter 'A' followed by a smaller, white, lowercase letter 'i'. The 'i' has a white dot and a thin white tail. The background is dark with abstract, glowing purple and blue lines and shapes, suggesting a futuristic or digital environment.

AIMLPROGRAMMING.COM



Ayutthaya Cement Factory Remote Monitoring and Control

Ayutthaya Cement Factory Remote Monitoring and Control is a powerful tool that enables businesses to remotely monitor and control their cement production processes. By leveraging advanced sensors, data analytics, and cloud-based technologies, this system offers several key benefits and applications for businesses:

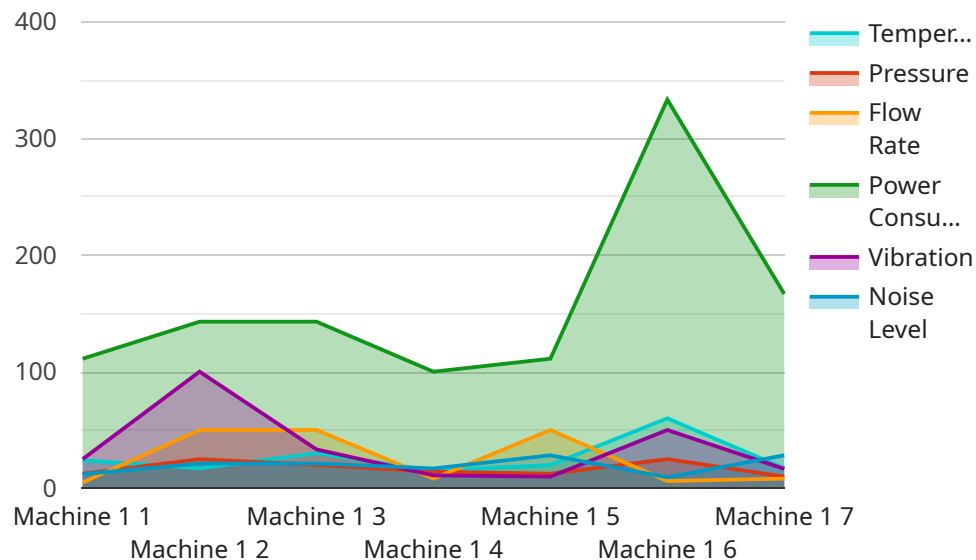
- 1. Real-Time Monitoring:** Ayutthaya Cement Factory Remote Monitoring and Control provides real-time visibility into the cement production process, allowing businesses to monitor key performance indicators (KPIs) such as production output, energy consumption, and equipment status. By having access to real-time data, businesses can quickly identify and address any issues or deviations from optimal operating conditions.
- 2. Remote Control:** This system enables businesses to remotely control and adjust various aspects of the cement production process. Operators can make changes to process parameters, such as temperature, pressure, and feed rates, from a remote location. This allows for quick and efficient adjustments to optimize production and minimize downtime.
- 3. Predictive Maintenance:** Ayutthaya Cement Factory Remote Monitoring and Control leverages data analytics to predict potential equipment failures and maintenance needs. By analyzing historical data and identifying patterns, businesses can proactively schedule maintenance tasks, reducing unplanned downtime and ensuring optimal equipment performance.
- 4. Energy Optimization:** This system provides insights into energy consumption patterns and identifies areas for improvement. Businesses can use this information to optimize energy usage, reduce operating costs, and enhance sustainability.
- 5. Improved Safety:** Remote monitoring and control capabilities allow businesses to minimize the need for on-site personnel, reducing the risk of accidents and improving overall safety in the cement production environment.

Ayutthaya Cement Factory Remote Monitoring and Control offers businesses a range of benefits, including real-time monitoring, remote control, predictive maintenance, energy optimization, and

improved safety. By leveraging this system, businesses can enhance operational efficiency, reduce costs, and ensure the smooth and reliable operation of their cement production processes.

API Payload Example

The provided payload is related to a comprehensive solution called "Ayutthaya Cement Factory Remote Monitoring and Control."



DATA VISUALIZATION OF THE PAYLOADS FOCUS

" This solution enables businesses to remotely monitor and control their cement production processes. It empowers them with the ability to optimize operations, improve efficiency, and enhance overall productivity. The payload showcases the capabilities, skills, and expertise of the company in providing pragmatic solutions to challenges in the field of remote monitoring and control. It highlights the use of advanced technologies and the team's deep understanding of the industry to deliver tailored solutions that meet the specific needs of cement producers. By leveraging this solution, businesses can gain valuable insights into their production processes, make informed decisions, and ultimately increase their profitability.

Sample 1

```
▼ [
  ▼ {
    "device_name": "Cement Factory Remote Monitoring and Control",
    "sensor_id": "CF67890",
    ▼ "data": {
      "sensor_type": "Cement Factory Remote Monitoring and Control",
      "location": "Factory",
      "production_line": "Line 2",
      "machine_id": "Machine 2",
      "temperature": 110,
      "pressure": 90,
```

```
    "flow_rate": 40,  
    "power_consumption": 900,  
    "vibration": 0.4,  
    "noise_level": 80,  
    "calibration_date": "2023-03-15",  
    "calibration_status": "Valid"  
  }  
}  
]
```

Sample 2

```
▼ [  
  ▼ {  
    "device_name": "Cement Factory Remote Monitoring and Control",  
    "sensor_id": "CF54321",  
    ▼ "data": {  
      "sensor_type": "Cement Factory Remote Monitoring and Control",  
      "location": "Factory",  
      "production_line": "Line 2",  
      "machine_id": "Machine 2",  
      "temperature": 110,  
      "pressure": 90,  
      "flow_rate": 40,  
      "power_consumption": 900,  
      "vibration": 0.4,  
      "noise_level": 80,  
      "calibration_date": "2023-03-07",  
      "calibration_status": "Valid"  
    }  
  }  
]
```

Sample 3

```
▼ [  
  ▼ {  
    "device_name": "Cement Factory Remote Monitoring and Control",  
    "sensor_id": "CF54321",  
    ▼ "data": {  
      "sensor_type": "Cement Factory Remote Monitoring and Control",  
      "location": "Factory",  
      "production_line": "Line 2",  
      "machine_id": "Machine 2",  
      "temperature": 110,  
      "pressure": 90,  
      "flow_rate": 40,  
      "power_consumption": 900,  
      "vibration": 0.4,  
      "noise_level": 80,  
      "calibration_date": "2023-03-07",  
    }  
  }  
]
```

```
    "calibration_status": "Valid"
  }
}
]
```

Sample 4

```
▼ [
  ▼ {
    "device_name": "Cement Factory Remote Monitoring and Control",
    "sensor_id": "CF12345",
    ▼ "data": {
      "sensor_type": "Cement Factory Remote Monitoring and Control",
      "location": "Factory",
      "production_line": "Line 1",
      "machine_id": "Machine 1",
      "temperature": 120,
      "pressure": 100,
      "flow_rate": 50,
      "power_consumption": 1000,
      "vibration": 0.5,
      "noise_level": 85,
      "calibration_date": "2023-03-08",
      "calibration_status": "Valid"
    }
  }
]
```

Meet Our Key Players in Project Management

Get to know the experienced leadership driving our project management forward: Sandeep Bharadwaj, a seasoned professional with a rich background in securities trading and technology entrepreneurship, and Stuart Dawsons, our Lead AI Engineer, spearheading innovation in AI solutions. Together, they bring decades of expertise to ensure the success of our projects.



Stuart Dawsons

Lead AI Engineer

Under Stuart Dawsons' leadership, our lead engineer, the company stands as a pioneering force in engineering groundbreaking AI solutions. Stuart brings to the table over a decade of specialized experience in machine learning and advanced AI solutions. His commitment to excellence is evident in our strategic influence across various markets. Navigating global landscapes, our core aim is to deliver inventive AI solutions that drive success internationally. With Stuart's guidance, expertise, and unwavering dedication to engineering excellence, we are well-positioned to continue setting new standards in AI innovation.



Sandeep Bharadwaj

Lead AI Consultant

As our lead AI consultant, Sandeep Bharadwaj brings over 29 years of extensive experience in securities trading and financial services across the UK, India, and Hong Kong. His expertise spans equities, bonds, currencies, and algorithmic trading systems. With leadership roles at DE Shaw, Tradition, and Tower Capital, Sandeep has a proven track record in driving business growth and innovation. His tenure at Tata Consultancy Services and Moody's Analytics further solidifies his proficiency in OTC derivatives and financial analytics. Additionally, as the founder of a technology company specializing in AI, Sandeep is uniquely positioned to guide and empower our team through its journey with our company. Holding an MBA from Manchester Business School and a degree in Mechanical Engineering from Manipal Institute of Technology, Sandeep's strategic insights and technical acumen will be invaluable assets in advancing our AI initiatives.