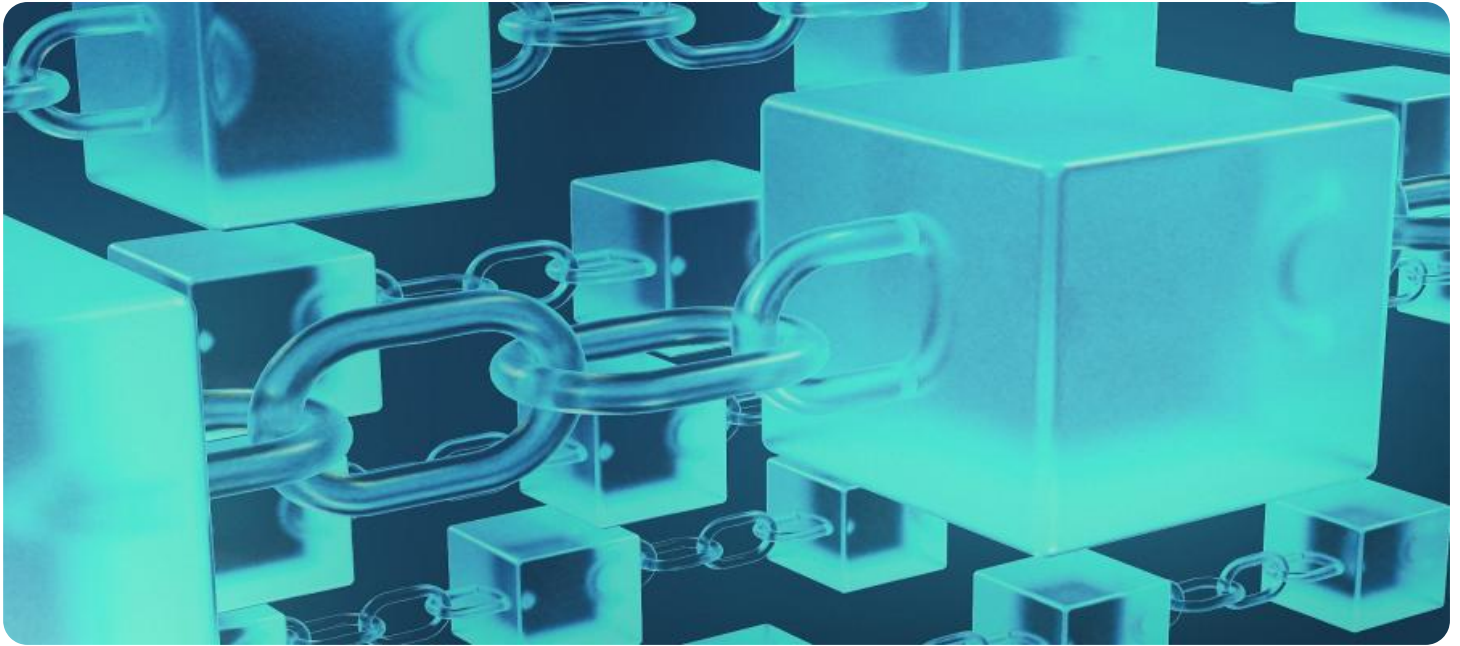


SAMPLE DATA

EXAMPLES OF PAYLOADS RELATED TO THE SERVICE



AIMLPROGRAMMING.COM



Blockchain-Enabled Traceability for Chonburi Produce

Blockchain-enabled traceability is a revolutionary technology that empowers businesses in the agricultural sector to track and trace the provenance and journey of their produce, from farm to fork. By leveraging the immutable and transparent nature of blockchain, businesses can enhance the traceability, transparency, and accountability of their supply chains, offering numerous benefits:

- 1. Provenance Verification:** Blockchain-enabled traceability provides consumers with confidence in the authenticity and origin of Chonburi produce. By scanning a QR code or accessing a dedicated platform, consumers can trace the journey of their produce, verifying its source, production methods, and certifications.
- 2. Transparency and Accountability:** The immutable nature of blockchain ensures that all transactions and data related to the produce are securely recorded and tamper-proof. This transparency enhances accountability throughout the supply chain, enabling businesses to identify and address any irregularities or discrepancies.
- 3. Enhanced Food Safety:** Blockchain-enabled traceability allows businesses to monitor and track the conditions of their produce throughout the supply chain, ensuring that it meets safety and quality standards. By identifying potential risks or contamination points, businesses can take proactive measures to safeguard consumer health and prevent foodborne illnesses.
- 4. Reduced Food Fraud:** The transparency and accountability provided by blockchain-enabled traceability make it more difficult for fraudulent activities to occur. By verifying the provenance and authenticity of produce, businesses can reduce the risk of adulteration, counterfeiting, or mislabeling, protecting consumers and maintaining brand integrity.
- 5. Improved Market Access:** Blockchain-enabled traceability can open up new market opportunities for Chonburi produce. By providing verifiable proof of origin, production practices, and certifications, businesses can meet the stringent requirements of international markets, expanding their reach and increasing exports.
- 6. Sustainability and Environmental Impact:** Blockchain-enabled traceability enables businesses to track and monitor the environmental impact of their produce throughout the supply chain. By

identifying areas for improvement, businesses can reduce waste, optimize resource utilization, and promote sustainable farming practices.

- 7. Consumer Engagement and Trust:** Blockchain-enabled traceability empowers consumers to make informed choices about the food they consume. By providing access to detailed information about the provenance and journey of their produce, businesses can build trust and foster stronger relationships with their customers.

Blockchain-enabled traceability offers businesses in the agricultural sector a transformative tool to enhance the traceability, transparency, and accountability of their supply chains. By providing verifiable proof of provenance, ensuring food safety, reducing fraud, and empowering consumers, blockchain-enabled traceability can drive innovation, boost consumer confidence, and unlock new market opportunities for Chonburi produce.

API Payload Example

The payload showcases the transformative potential of blockchain-enabled traceability for the agricultural sector, particularly for Chonburi produce. By leveraging blockchain's immutable and transparent nature, businesses can revolutionize their supply chains, enhancing traceability, transparency, accountability, and consumer trust. The payload demonstrates how blockchain-enabled traceability can empower businesses to verify provenance and authenticity, ensure food safety, reduce fraud, expand market access, promote sustainability, and foster consumer engagement. It provides a comprehensive overview of the practical applications of blockchain-enabled traceability, highlighting its ability to drive innovation, boost consumer confidence, and unlock new market opportunities for the Chonburi produce industry.

Sample 1

```
▼ [
  ▼ {
    "traceability_type": "Blockchain-Enabled Traceability for Chonburi Produce",
    "produce_type": "Pineapple",
    "farm_name": "Pattaya Pineapple Farm",
    "farm_location": "Pattaya, Thailand",
    "factory_name": "Pattaya Pineapple Factory",
    "factory_location": "Pattaya, Thailand",
    "plant_name": "Pattaya Pineapple Plant",
    "plant_location": "Pattaya, Thailand",
    "harvest_date": "2023-04-01",
    "packing_date": "2023-04-03",
    "shipping_date": "2023-04-05",
    "delivery_date": "2023-04-07",
    "consumer_name": "Jane Doe",
    "consumer_location": "Los Angeles, USA",
    "blockchain_transaction_id": "0x9876543210fedcba"
  }
]
```

Sample 2

```
▼ [
  ▼ {
    "traceability_type": "Blockchain-Enabled Traceability for Chonburi Produce",
    "produce_type": "Pineapple",
    "farm_name": "Pattaya Pineapple Farm",
    "farm_location": "Pattaya, Thailand",
    "factory_name": "Pattaya Pineapple Factory",
    "factory_location": "Pattaya, Thailand",
    "plant_name": "Pattaya Pineapple Plant",
```

```
"plant_location": "Pattaya, Thailand",
"harvest_date": "2023-04-01",
"packing_date": "2023-04-03",
"shipping_date": "2023-04-05",
"delivery_date": "2023-04-07",
"consumer_name": "Jane Doe",
"consumer_location": "Los Angeles, USA",
"blockchain_transaction_id": "0x9876543210fedcba"
}
]
```

Sample 3

```
▼ [
  ▼ {
    "traceability_type": "Blockchain-Enabled Traceability for Chonburi Produce",
    "produce_type": "Pineapple",
    "farm_name": "Chonburi Pineapple Farm",
    "farm_location": "Chonburi, Thailand",
    "factory_name": "Chonburi Pineapple Factory",
    "factory_location": "Chonburi, Thailand",
    "plant_name": "Chonburi Pineapple Plant",
    "plant_location": "Chonburi, Thailand",
    "harvest_date": "2023-04-01",
    "packing_date": "2023-04-03",
    "shipping_date": "2023-04-05",
    "delivery_date": "2023-04-07",
    "consumer_name": "Jane Doe",
    "consumer_location": "Los Angeles, USA",
    "blockchain_transaction_id": "0x9876543210fedcba"
  }
]
```

Sample 4

```
▼ [
  ▼ {
    "traceability_type": "Blockchain-Enabled Traceability for Chonburi Produce",
    "produce_type": "Mango",
    "farm_name": "Chonburi Mango Farm",
    "farm_location": "Chonburi, Thailand",
    "factory_name": "Chonburi Mango Factory",
    "factory_location": "Chonburi, Thailand",
    "plant_name": "Chonburi Mango Plant",
    "plant_location": "Chonburi, Thailand",
    "harvest_date": "2023-03-08",
    "packing_date": "2023-03-10",
    "shipping_date": "2023-03-12",
    "delivery_date": "2023-03-14",
    "consumer_name": "John Doe",
    "consumer_location": "New York, USA",
  }
]
```

```
]    "blockchain_transaction_id": "0x1234567890abcdef"  
}
```

Meet Our Key Players in Project Management

Get to know the experienced leadership driving our project management forward: Sandeep Bharadwaj, a seasoned professional with a rich background in securities trading and technology entrepreneurship, and Stuart Dawsons, our Lead AI Engineer, spearheading innovation in AI solutions. Together, they bring decades of expertise to ensure the success of our projects.



Stuart Dawsons

Lead AI Engineer

Under Stuart Dawsons' leadership, our lead engineer, the company stands as a pioneering force in engineering groundbreaking AI solutions. Stuart brings to the table over a decade of specialized experience in machine learning and advanced AI solutions. His commitment to excellence is evident in our strategic influence across various markets. Navigating global landscapes, our core aim is to deliver inventive AI solutions that drive success internationally. With Stuart's guidance, expertise, and unwavering dedication to engineering excellence, we are well-positioned to continue setting new standards in AI innovation.



Sandeep Bharadwaj

Lead AI Consultant

As our lead AI consultant, Sandeep Bharadwaj brings over 29 years of extensive experience in securities trading and financial services across the UK, India, and Hong Kong. His expertise spans equities, bonds, currencies, and algorithmic trading systems. With leadership roles at DE Shaw, Tradition, and Tower Capital, Sandeep has a proven track record in driving business growth and innovation. His tenure at Tata Consultancy Services and Moody's Analytics further solidifies his proficiency in OTC derivatives and financial analytics. Additionally, as the founder of a technology company specializing in AI, Sandeep is uniquely positioned to guide and empower our team through its journey with our company. Holding an MBA from Manchester Business School and a degree in Mechanical Engineering from Manipal Institute of Technology, Sandeep's strategic insights and technical acumen will be invaluable assets in advancing our AI initiatives.