

SAMPLE DATA

EXAMPLES OF PAYLOADS RELATED TO THE SERVICE

The logo features a large, bold, cyan-colored letter 'A' followed by a smaller, white, italicized letter 'i'. The 'i' has a white dot. The background of the entire page is a dark blue and purple circuit board pattern with glowing lines.

AIMLPROGRAMMING.COM



Chiang Rai Food Safety Monitoring

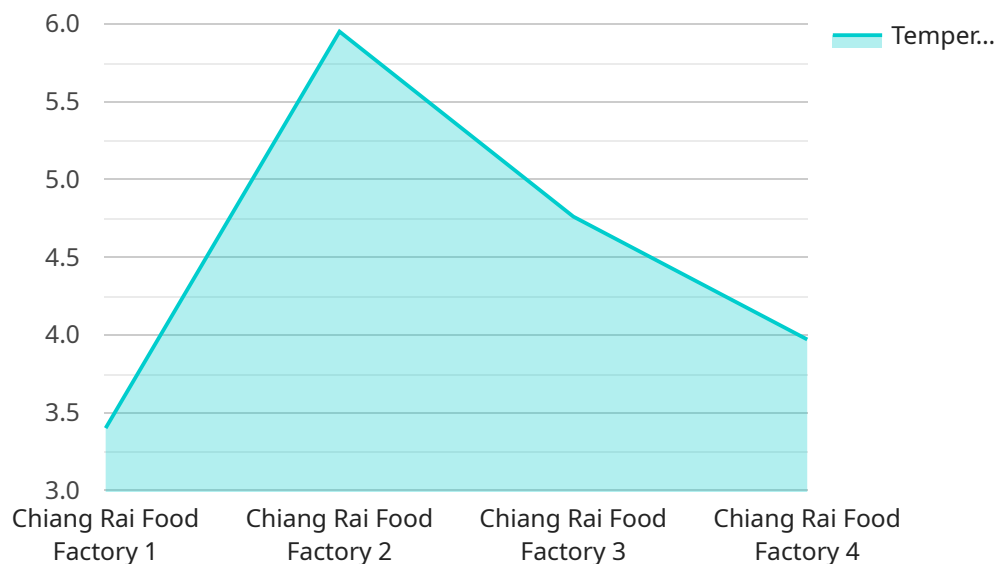
Chiang Rai Food Safety Monitoring is a comprehensive system designed to ensure the safety and quality of food products in Chiang Rai, Thailand. By leveraging advanced technology and rigorous inspection processes, this system provides businesses with several key benefits and applications:

- 1. Food Safety Compliance:** Chiang Rai Food Safety Monitoring helps businesses comply with local and international food safety regulations, ensuring that their products meet the highest standards of quality and safety. By adhering to strict inspection protocols, businesses can minimize the risk of foodborne illnesses and protect the health of consumers.
- 2. Quality Control:** The system provides businesses with a comprehensive quality control mechanism, enabling them to identify and address any potential food safety issues. Through regular inspections and testing, businesses can ensure the consistency and quality of their food products, meeting the expectations of their customers and maintaining their reputation.
- 3. Traceability and Accountability:** Chiang Rai Food Safety Monitoring establishes a robust traceability system, allowing businesses to track the movement of food products throughout the supply chain. In the event of a food safety incident, businesses can quickly identify the source of the problem and take appropriate action to mitigate risks and protect consumers.
- 4. Consumer Confidence:** By implementing a rigorous food safety monitoring system, businesses can instill confidence among consumers that their products are safe and of high quality. This can lead to increased customer loyalty, positive brand reputation, and enhanced sales.
- 5. Market Access:** Chiang Rai Food Safety Monitoring facilitates market access for businesses by meeting the food safety requirements of international markets. By adhering to global standards, businesses can expand their reach, increase exports, and tap into new revenue streams.

Chiang Rai Food Safety Monitoring plays a vital role in supporting the food industry in Chiang Rai, ensuring the safety and quality of food products, protecting consumer health, and fostering economic growth. By leveraging this system, businesses can demonstrate their commitment to food safety, enhance their reputation, and drive success in the competitive food market.

API Payload Example

The payload is related to a service that provides comprehensive food safety monitoring solutions for businesses in Chiang Rai, Thailand.



DATA VISUALIZATION OF THE PAYLOADS FOCUS

The service leverages technology and rigorous inspection processes to help businesses meet the highest standards of food safety and quality.

The service focuses on various aspects of food safety monitoring, including compliance, quality control, traceability, consumer confidence, and market access. It provides coded solutions that assist businesses in overcoming challenges and achieving their food safety goals.

By utilizing this service, businesses can ensure the safety and quality of their food products, build consumer confidence, and gain access to new markets. The service is designed to support the local food industry and promote the health and well-being of consumers in Chiang Rai.

Sample 1

```
▼ [
  ▼ {
    "device_name": "Chiang Rai Food Safety Monitoring",
    "sensor_id": "CRFSM54321",
    ▼ "data": {
      "sensor_type": "Food Safety Monitoring",
      "location": "Warehouse",
      "temperature": 25.2,
      "humidity": 70,
```

```
    "co2_level": 1200,  
    "nh3_level": 600,  
    "h2s_level": 300,  
    "so2_level": 150,  
    "no2_level": 75,  
    "o3_level": 35,  
    "pm2_5_level": 15,  
    "pm10_level": 10,  
    "factory_name": "Chiang Rai Food Warehouse",  
    "factory_address": "456 Chiang Rai Road, Chiang Rai, Thailand",  
    "factory_contact_person": "Jane Doe",  
    "factory_contact_number": "+66 82 123 4567",  
    "factory_contact_email": "jane.doe@chiangraifoodwarehouse.com"  
  }  
}  
]
```

Sample 2

```
▼ [  
  ▼ {  
    "device_name": "Chiang Rai Food Safety Monitoring",  
    "sensor_id": "CRFSM12346",  
    ▼ "data": {  
      "sensor_type": "Food Safety Monitoring",  
      "location": "Warehouse",  
      "temperature": 25.2,  
      "humidity": 70,  
      "co2_level": 1200,  
      "nh3_level": 600,  
      "h2s_level": 300,  
      "so2_level": 120,  
      "no2_level": 60,  
      "o3_level": 30,  
      "pm2_5_level": 12,  
      "pm10_level": 6,  
      "factory_name": "Chiang Rai Food Warehouse",  
      "factory_address": "456 Chiang Rai Road, Chiang Rai, Thailand",  
      "factory_contact_person": "Jane Doe",  
      "factory_contact_number": "+66 82 123 4568",  
      "factory_contact_email": "jane.doe@chiangraifoodwarehouse.com"  
    }  
  }  
]
```

Sample 3

```
▼ [  
  ▼ {  
    "device_name": "Chiang Rai Food Safety Monitoring",  
    "sensor_id": "CRFSM54321",
```

```
▼ "data": {
  "sensor_type": "Food Safety Monitoring",
  "location": "Warehouse",
  "temperature": 25.2,
  "humidity": 70,
  "co2_level": 1200,
  "nh3_level": 600,
  "h2s_level": 300,
  "so2_level": 150,
  "no2_level": 75,
  "o3_level": 35,
  "pm2_5_level": 15,
  "pm10_level": 10,
  "factory_name": "Chiang Rai Food Warehouse",
  "factory_address": "456 Chiang Rai Road, Chiang Rai, Thailand",
  "factory_contact_person": "Jane Doe",
  "factory_contact_number": "+66 82 123 4567",
  "factory_contact_email": "jane.doe@chiangraifoodwarehouse.com"
}
]
```

Sample 4

```
▼ [
  ▼ {
    "device_name": "Chiang Rai Food Safety Monitoring",
    "sensor_id": "CRFSM12345",
    ▼ "data": {
      "sensor_type": "Food Safety Monitoring",
      "location": "Factory",
      "temperature": 23.8,
      "humidity": 65,
      "co2_level": 1000,
      "nh3_level": 500,
      "h2s_level": 250,
      "so2_level": 100,
      "no2_level": 50,
      "o3_level": 25,
      "pm2_5_level": 10,
      "pm10_level": 5,
      "factory_name": "Chiang Rai Food Factory",
      "factory_address": "123 Chiang Rai Road, Chiang Rai, Thailand",
      "factory_contact_person": "John Smith",
      "factory_contact_number": "+66 81 123 4567",
      "factory_contact_email": "john.smith@chiangraifoodfactory.com"
    }
  }
]
```

Meet Our Key Players in Project Management

Get to know the experienced leadership driving our project management forward: Sandeep Bharadwaj, a seasoned professional with a rich background in securities trading and technology entrepreneurship, and Stuart Dawsons, our Lead AI Engineer, spearheading innovation in AI solutions. Together, they bring decades of expertise to ensure the success of our projects.



Stuart Dawsons

Lead AI Engineer

Under Stuart Dawsons' leadership, our lead engineer, the company stands as a pioneering force in engineering groundbreaking AI solutions. Stuart brings to the table over a decade of specialized experience in machine learning and advanced AI solutions. His commitment to excellence is evident in our strategic influence across various markets. Navigating global landscapes, our core aim is to deliver inventive AI solutions that drive success internationally. With Stuart's guidance, expertise, and unwavering dedication to engineering excellence, we are well-positioned to continue setting new standards in AI innovation.



Sandeep Bharadwaj

Lead AI Consultant

As our lead AI consultant, Sandeep Bharadwaj brings over 29 years of extensive experience in securities trading and financial services across the UK, India, and Hong Kong. His expertise spans equities, bonds, currencies, and algorithmic trading systems. With leadership roles at DE Shaw, Tradition, and Tower Capital, Sandeep has a proven track record in driving business growth and innovation. His tenure at Tata Consultancy Services and Moody's Analytics further solidifies his proficiency in OTC derivatives and financial analytics. Additionally, as the founder of a technology company specializing in AI, Sandeep is uniquely positioned to guide and empower our team through its journey with our company. Holding an MBA from Manchester Business School and a degree in Mechanical Engineering from Manipal Institute of Technology, Sandeep's strategic insights and technical acumen will be invaluable assets in advancing our AI initiatives.