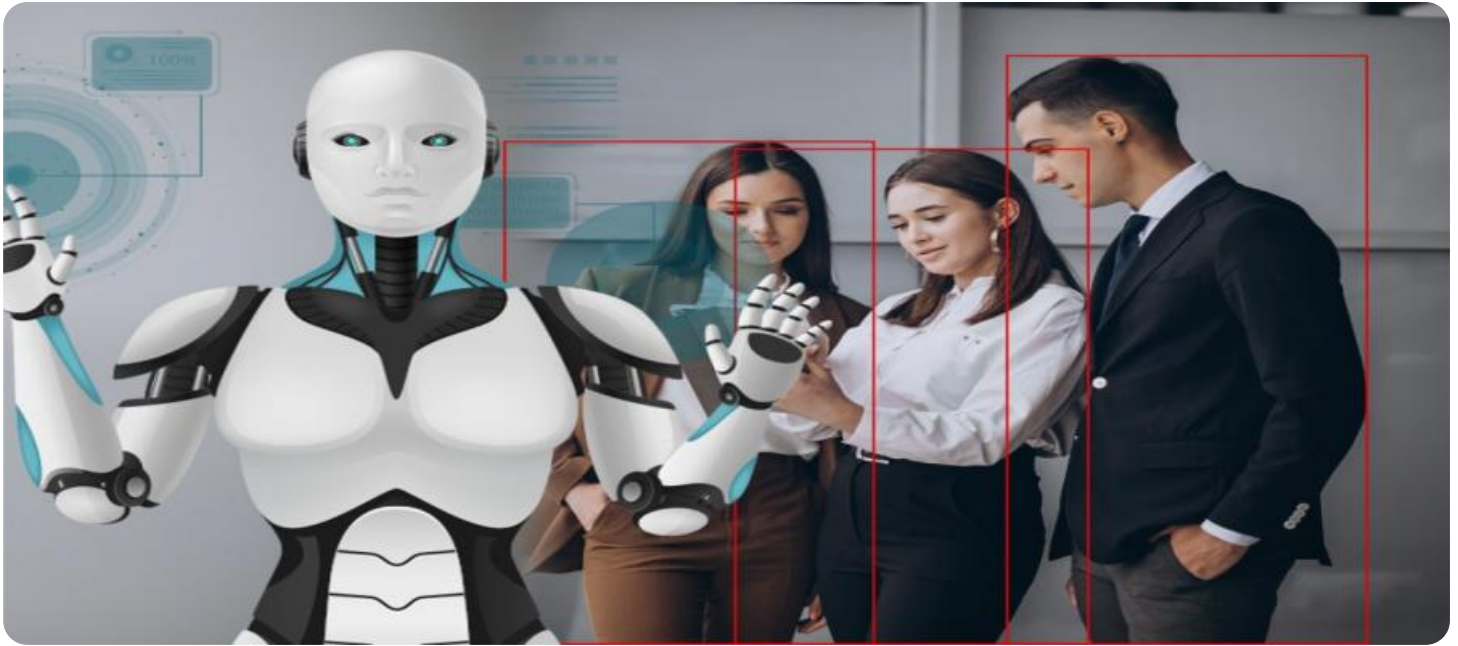


SAMPLE DATA

EXAMPLES OF PAYLOADS RELATED TO THE SERVICE



AIMLPROGRAMMING.COM



Krabi AI-Enabled Safety Monitoring for Factories

Krabi AI-Enabled Safety Monitoring for Factories is a cutting-edge solution that empowers businesses to enhance workplace safety and prevent accidents through advanced artificial intelligence (AI) technology. This innovative system offers several key benefits and applications from a business perspective:

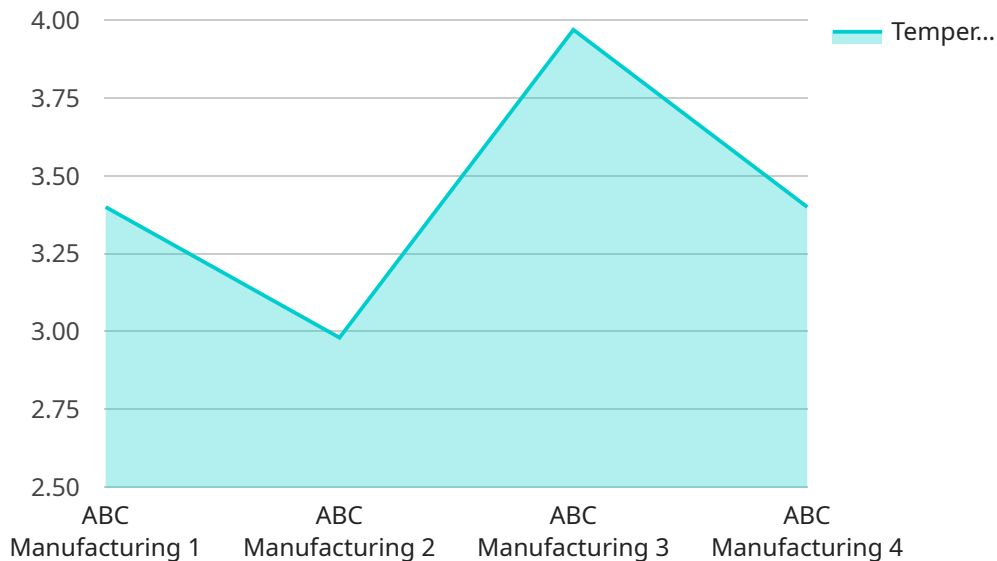
- 1. Real-Time Hazard Detection:** Krabi's AI-powered system continuously monitors factory environments, detecting potential hazards such as unsafe work practices, equipment malfunctions, or environmental risks. By providing real-time alerts, businesses can proactively address hazards, preventing accidents and ensuring worker safety.
- 2. Automated Safety Compliance:** Krabi helps businesses maintain compliance with safety regulations and standards. The system automatically monitors adherence to safety protocols, identifying and reporting any deviations or violations. This ensures compliance, reduces legal risks, and fosters a culture of safety within the factory.
- 3. Improved Incident Investigation:** In the event of an incident, Krabi's AI-enabled system provides valuable data and insights for thorough investigation. By analyzing footage and identifying root causes, businesses can learn from past incidents, implement corrective actions, and prevent similar occurrences in the future.
- 4. Enhanced Worker Training:** Krabi's system can be used to identify areas where workers require additional training or refresher courses. By analyzing safety data and identifying common hazards or areas of concern, businesses can tailor training programs to address specific needs, improving worker knowledge and skills.
- 5. Reduced Insurance Premiums:** Factories with a proven track record of safety and compliance can often negotiate lower insurance premiums. Krabi's AI-enabled safety monitoring system provides comprehensive documentation and data that demonstrates a commitment to safety, potentially reducing insurance costs.
- 6. Increased Productivity:** A safe and hazard-free work environment contributes to increased productivity. When workers feel safe and protected, they are more likely to be focused, efficient,

and productive, leading to improved overall business performance.

Krabi AI-Enabled Safety Monitoring for Factories is a valuable investment for businesses seeking to enhance workplace safety, reduce risks, and improve operational efficiency. By leveraging AI technology, businesses can create a safer and more productive work environment, protecting their employees, assets, and reputation.

API Payload Example

The payload is a comprehensive endpoint related to Krabi AI-Enabled Safety Monitoring for Factories, an advanced solution that leverages artificial intelligence (AI) to enhance workplace safety and prevent accidents.



DATA VISUALIZATION OF THE PAYLOADS FOCUS

This innovative system offers a multitude of benefits, including real-time hazard detection, automated safety compliance, improved incident investigation, enhanced worker training, reduced insurance premiums, and increased productivity.

Krabi's AI-powered system continuously monitors factory environments, detecting potential hazards and providing real-time alerts. It helps businesses maintain compliance with safety regulations, identifying and reporting any deviations or violations. In the event of an incident, Krabi provides valuable data and insights for thorough investigation, enabling businesses to learn from past incidents and implement corrective actions.

By analyzing safety data and identifying common hazards or areas of concern, Krabi helps businesses tailor training programs to address specific worker needs. Factories with a proven track record of safety and compliance can often negotiate lower insurance premiums, and Krabi's AI-enabled safety monitoring system provides comprehensive documentation and data that demonstrates a commitment to safety. A safe and hazard-free work environment contributes to increased productivity, as workers are more likely to be focused, efficient, and productive when they feel safe and protected.

Overall, the payload provides a detailed overview of Krabi AI-Enabled Safety Monitoring for Factories, highlighting its capabilities and benefits for businesses seeking to enhance workplace safety, reduce risks, and improve operational efficiency.

Sample 1

```
▼ [
  ▼ {
    "device_name": "Krabi AI-Enabled Safety Monitoring System v2",
    "sensor_id": "KAI67890",
    ▼ "data": {
      "sensor_type": "AI-Enabled Safety Monitoring System",
      "location": "Factory",
      ▼ "safety_parameters": {
        "temperature": 25.2,
        "humidity": 45,
        "noise_level": 90,
        "vibration": 0.7,
        "air_quality": "Moderate",
        "occupancy": 15,
        "emergency_status": "Alert"
      },
      ▼ "factory_details": {
        "factory_name": "XYZ Manufacturing",
        "factory_address": "456 Elm Street, Anytown, CA 91234",
        "industry": "Electronics",
        "number_of_employees": 600
      },
      ▼ "plant_details": {
        "plant_name": "Plant 2",
        "plant_address": "789 Oak Street, Anytown, CA 91234",
        "plant_type": "Fabrication",
        "number_of_machines": 120
      },
      "calibration_date": "2023-04-12",
      "calibration_status": "Expired"
    }
  }
]
```

Sample 2

```
▼ [
  ▼ {
    "device_name": "Krabi AI-Enabled Safety Monitoring System v2",
    "sensor_id": "KAI54321",
    ▼ "data": {
      "sensor_type": "AI-Enabled Safety Monitoring System",
      "location": "Factory",
      ▼ "safety_parameters": {
        "temperature": 25.2,
        "humidity": 45,
        "noise_level": 90,
        "vibration": 0.7,
        "air_quality": "Moderate",
        "occupancy": 15,
        "emergency_status": "Alert"
      }
    }
  }
]
```

```

    },
    ▼ "factory_details": {
      "factory_name": "XYZ Industries",
      "factory_address": "456 Elm Street, Anytown, CA 91234",
      "industry": "Electronics",
      "number_of_employees": 600
    },
    ▼ "plant_details": {
      "plant_name": "Plant 2",
      "plant_address": "789 Oak Street, Anytown, CA 91234",
      "plant_type": "Manufacturing",
      "number_of_machines": 120
    },
    "calibration_date": "2023-04-12",
    "calibration_status": "Expired"
  }
}
]

```

Sample 3

```

▼ [
  ▼ {
    "device_name": "Krabi AI-Enabled Safety Monitoring System v2",
    "sensor_id": "KAI67890",
    ▼ "data": {
      "sensor_type": "AI-Enabled Safety Monitoring System",
      "location": "Factory",
      ▼ "safety_parameters": {
        "temperature": 25.2,
        "humidity": 45,
        "noise_level": 90,
        "vibration": 0.7,
        "air_quality": "Moderate",
        "occupancy": 15,
        "emergency_status": "Alert"
      },
      ▼ "factory_details": {
        "factory_name": "XYZ Industries",
        "factory_address": "456 Oak Street, Anytown, CA 91234",
        "industry": "Electronics",
        "number_of_employees": 600
      },
      ▼ "plant_details": {
        "plant_name": "Plant 2",
        "plant_address": "789 Pine Street, Anytown, CA 91234",
        "plant_type": "Manufacturing",
        "number_of_machines": 120
      },
      "calibration_date": "2023-04-12",
      "calibration_status": "Pending"
    }
  }
]

```

Sample 4

```
▼ [
  ▼ {
    "device_name": "Krabi AI-Enabled Safety Monitoring System",
    "sensor_id": "KAI12345",
    ▼ "data": {
      "sensor_type": "AI-Enabled Safety Monitoring System",
      "location": "Factory",
      ▼ "safety_parameters": {
        "temperature": 23.8,
        "humidity": 50,
        "noise_level": 85,
        "vibration": 0.5,
        "air_quality": "Good",
        "occupancy": 10,
        "emergency_status": "Normal"
      },
      ▼ "factory_details": {
        "factory_name": "ABC Manufacturing",
        "factory_address": "123 Main Street, Anytown, CA 91234",
        "industry": "Automotive",
        "number_of_employees": 500
      },
      ▼ "plant_details": {
        "plant_name": "Plant 1",
        "plant_address": "456 Elm Street, Anytown, CA 91234",
        "plant_type": "Assembly",
        "number_of_machines": 100
      },
      "calibration_date": "2023-03-08",
      "calibration_status": "Valid"
    }
  }
]
```

Meet Our Key Players in Project Management

Get to know the experienced leadership driving our project management forward: Sandeep Bharadwaj, a seasoned professional with a rich background in securities trading and technology entrepreneurship, and Stuart Dawsons, our Lead AI Engineer, spearheading innovation in AI solutions. Together, they bring decades of expertise to ensure the success of our projects.



Stuart Dawsons

Lead AI Engineer

Under Stuart Dawsons' leadership, our lead engineer, the company stands as a pioneering force in engineering groundbreaking AI solutions. Stuart brings to the table over a decade of specialized experience in machine learning and advanced AI solutions. His commitment to excellence is evident in our strategic influence across various markets. Navigating global landscapes, our core aim is to deliver inventive AI solutions that drive success internationally. With Stuart's guidance, expertise, and unwavering dedication to engineering excellence, we are well-positioned to continue setting new standards in AI innovation.



Sandeep Bharadwaj

Lead AI Consultant

As our lead AI consultant, Sandeep Bharadwaj brings over 29 years of extensive experience in securities trading and financial services across the UK, India, and Hong Kong. His expertise spans equities, bonds, currencies, and algorithmic trading systems. With leadership roles at DE Shaw, Tradition, and Tower Capital, Sandeep has a proven track record in driving business growth and innovation. His tenure at Tata Consultancy Services and Moody's Analytics further solidifies his proficiency in OTC derivatives and financial analytics. Additionally, as the founder of a technology company specializing in AI, Sandeep is uniquely positioned to guide and empower our team through its journey with our company. Holding an MBA from Manchester Business School and a degree in Mechanical Engineering from Manipal Institute of Technology, Sandeep's strategic insights and technical acumen will be invaluable assets in advancing our AI initiatives.