

SAMPLE DATA

EXAMPLES OF PAYLOADS RELATED TO THE SERVICE



AIMLPROGRAMMING.COM



Pattaya Horticulture Greenhouse Automation

Pattaya Horticulture Greenhouse Automation is a cutting-edge solution designed to optimize plant growth and production in greenhouse environments. By leveraging advanced automation technologies and data-driven insights, businesses can enhance their horticulture operations and achieve improved yields, reduced costs, and increased sustainability.

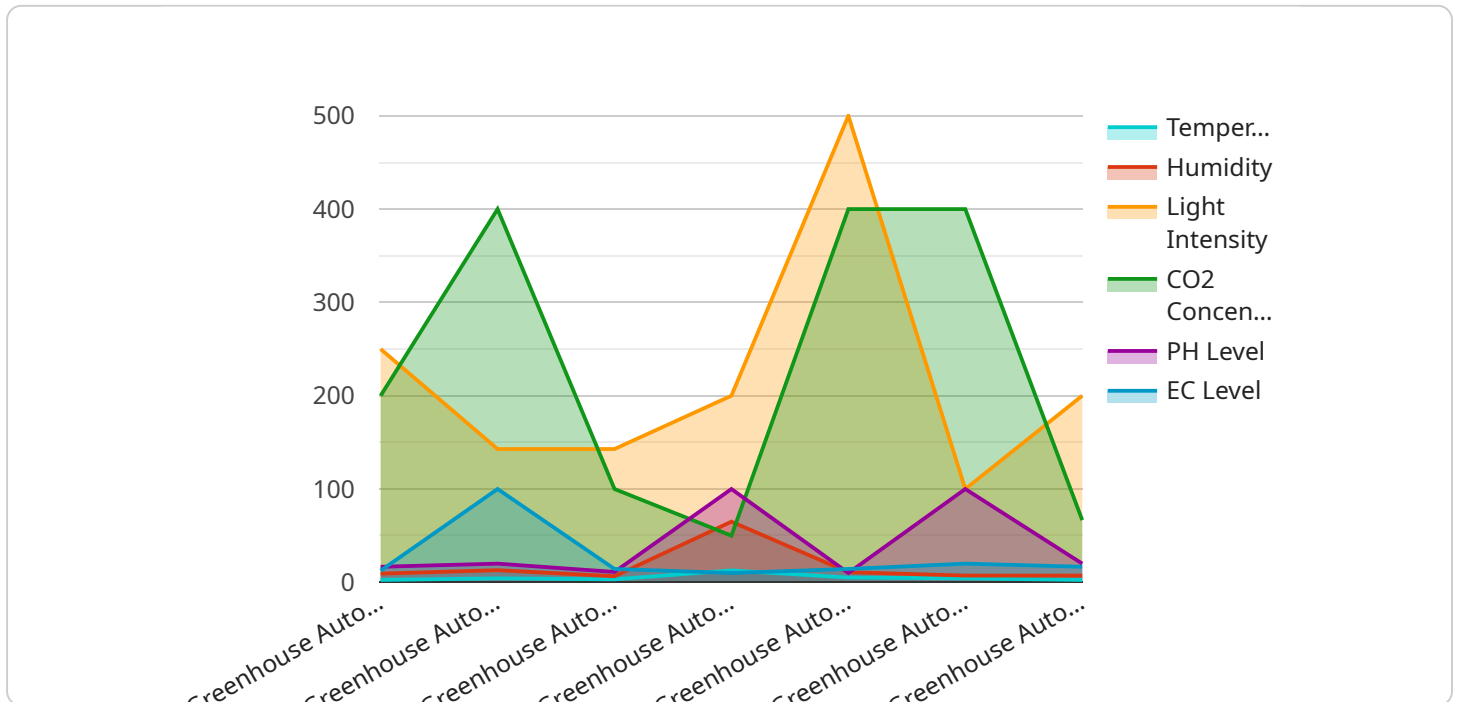
- 1. Environmental Control:** Pattaya Horticulture Greenhouse Automation automates environmental parameters such as temperature, humidity, light intensity, and CO2 levels. By precisely controlling these factors, businesses can create an optimal growing environment for their crops, ensuring consistent growth and maximizing yields.
- 2. Irrigation Management:** The automation system monitors soil moisture levels and adjusts irrigation schedules accordingly. This ensures that plants receive the optimal amount of water, reducing water usage, preventing overwatering, and promoting healthy root development.
- 3. Fertilization Optimization:** Pattaya Horticulture Greenhouse Automation analyzes plant nutrient requirements and automatically adjusts fertilizer application. By providing the right nutrients at the right time, businesses can enhance plant growth, improve fruit quality, and reduce fertilizer costs.
- 4. Pest and Disease Control:** The system monitors plant health and detects early signs of pests or diseases. Automated pest control measures, such as biological controls or targeted pesticide applications, can be implemented to minimize crop damage and ensure plant health.
- 5. Data Analytics and Insights:** Pattaya Horticulture Greenhouse Automation collects and analyzes data from sensors and other sources. This data provides valuable insights into plant growth, environmental conditions, and resource consumption. Businesses can use these insights to optimize their operations, identify areas for improvement, and make informed decisions.
- 6. Remote Monitoring and Control:** The automation system allows businesses to remotely monitor and control their greenhouse operations from anywhere with an internet connection. This enables real-time adjustments, quick response to changing conditions, and efficient management of multiple greenhouses.

7. Labor Savings and Efficiency: Pattaya Horticulture Greenhouse Automation reduces the need for manual labor, freeing up staff for higher-value tasks. Automated processes improve efficiency, reduce errors, and ensure consistency in plant care.

By implementing Pattaya Horticulture Greenhouse Automation, businesses can achieve significant benefits, including increased crop yields, improved plant quality, reduced operating costs, enhanced sustainability, and increased profitability. The automation system empowers businesses to optimize their horticulture operations, gain valuable insights, and stay competitive in the global market.

API Payload Example

The payload provided relates to Pattaya Horticulture Greenhouse Automation, a comprehensive solution designed to revolutionize plant cultivation in greenhouse environments.



DATA VISUALIZATION OF THE PAYLOADS FOCUS

By leveraging automation and data-driven insights, this technology optimizes plant growth, enhances production, and empowers businesses to achieve success in the horticulture industry.

The payload encompasses various modules, including environmental control, irrigation management, fertilization optimization, pest and disease control, data analytics, remote monitoring, and labor savings. These modules work synergistically to provide businesses with a holistic approach to greenhouse automation.

Pattaya Horticulture Greenhouse Automation empowers businesses to achieve remarkable results, such as increased crop yields, improved plant quality, reduced operating costs, and enhanced sustainability. Through practical examples and case studies, the payload demonstrates how this solution addresses the unique challenges faced by businesses in the horticulture industry.

Overall, the payload provides a comprehensive overview of Pattaya Horticulture Greenhouse Automation, highlighting its capabilities, benefits, and the transformative impact it can have on horticulture operations. It showcases the commitment to innovation and the dedication to helping businesses achieve their full potential in the horticulture industry.

Sample 1

```
  {
    "device_name": "Greenhouse Automation System",
    "sensor_id": "GHAS54321",
    "data": {
      "sensor_type": "Greenhouse Automation System",
      "location": "Pattaya Horticulture Greenhouse",
      "temperature": 27.3,
      "humidity": 70,
      "light_intensity": 1200,
      "co2_concentration": 450,
      "ph_level": 6.8,
      "ec_level": 1.4,
      "factory_name": "Pattaya Horticulture",
      "plant_name": "Greenhouse 2"
    }
  }
]
```

Sample 2

```
[
  {
    "device_name": "Greenhouse Automation System",
    "sensor_id": "GHAS54321",
    "data": {
      "sensor_type": "Greenhouse Automation System",
      "location": "Pattaya Horticulture Greenhouse",
      "temperature": 24.8,
      "humidity": 70,
      "light_intensity": 1200,
      "co2_concentration": 450,
      "ph_level": 6.8,
      "ec_level": 1.4,
      "factory_name": "Pattaya Horticulture",
      "plant_name": "Greenhouse 2"
    }
  }
]
```

Sample 3

```
[
  {
    "device_name": "Greenhouse Automation System",
    "sensor_id": "GHAS54321",
    "data": {
      "sensor_type": "Greenhouse Automation System",
      "location": "Pattaya Horticulture Greenhouse",
      "temperature": 27.2,
      "humidity": 70,
      "light_intensity": 1200,
```

```
    "co2_concentration": 450,  
    "ph_level": 6.8,  
    "ec_level": 1.4,  
    "factory_name": "Pattaya Horticulture",  
    "plant_name": "Greenhouse 2"  
  }  
}  
]
```

Sample 4

```
▼ [  
  ▼ {  
    "device_name": "Greenhouse Automation System",  
    "sensor_id": "GHAS12345",  
    ▼ "data": {  
      "sensor_type": "Greenhouse Automation System",  
      "location": "Pattaya Horticulture Greenhouse",  
      "temperature": 25.5,  
      "humidity": 65,  
      "light_intensity": 1000,  
      "co2_concentration": 400,  
      "ph_level": 6.5,  
      "ec_level": 1.2,  
      "factory_name": "Pattaya Horticulture",  
      "plant_name": "Greenhouse 1"  
    }  
  }  
]
```

Meet Our Key Players in Project Management

Get to know the experienced leadership driving our project management forward: Sandeep Bharadwaj, a seasoned professional with a rich background in securities trading and technology entrepreneurship, and Stuart Dawsons, our Lead AI Engineer, spearheading innovation in AI solutions. Together, they bring decades of expertise to ensure the success of our projects.



Stuart Dawsons

Lead AI Engineer

Under Stuart Dawsons' leadership, our lead engineer, the company stands as a pioneering force in engineering groundbreaking AI solutions. Stuart brings to the table over a decade of specialized experience in machine learning and advanced AI solutions. His commitment to excellence is evident in our strategic influence across various markets. Navigating global landscapes, our core aim is to deliver inventive AI solutions that drive success internationally. With Stuart's guidance, expertise, and unwavering dedication to engineering excellence, we are well-positioned to continue setting new standards in AI innovation.



Sandeep Bharadwaj

Lead AI Consultant

As our lead AI consultant, Sandeep Bharadwaj brings over 29 years of extensive experience in securities trading and financial services across the UK, India, and Hong Kong. His expertise spans equities, bonds, currencies, and algorithmic trading systems. With leadership roles at DE Shaw, Tradition, and Tower Capital, Sandeep has a proven track record in driving business growth and innovation. His tenure at Tata Consultancy Services and Moody's Analytics further solidifies his proficiency in OTC derivatives and financial analytics. Additionally, as the founder of a technology company specializing in AI, Sandeep is uniquely positioned to guide and empower our team through its journey with our company. Holding an MBA from Manchester Business School and a degree in Mechanical Engineering from Manipal Institute of Technology, Sandeep's strategic insights and technical acumen will be invaluable assets in advancing our AI initiatives.