

SAMPLE DATA

EXAMPLES OF PAYLOADS RELATED TO THE SERVICE



AIMLPROGRAMMING.COM



Pharmaceutical Plant Equipment Analysis Chonburi

Pharmaceutical Plant Equipment Analysis Chonburi is a comprehensive service that provides businesses with detailed insights into the performance and efficiency of their pharmaceutical manufacturing equipment. By leveraging advanced data analytics and industry expertise, this analysis offers several key benefits and applications for businesses:

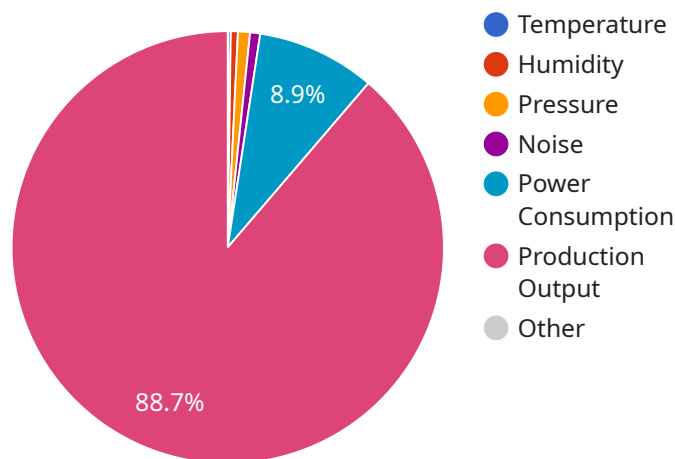
- 1. Equipment Optimization:** Pharmaceutical Plant Equipment Analysis Chonburi helps businesses identify areas for improvement and optimization in their manufacturing processes. By analyzing equipment data, businesses can pinpoint bottlenecks, reduce downtime, and maximize production efficiency, leading to increased productivity and cost savings.
- 2. Predictive Maintenance:** The analysis provides predictive maintenance insights, enabling businesses to proactively identify potential equipment failures and schedule maintenance accordingly. By predicting and addressing maintenance needs before they become critical, businesses can minimize unplanned downtime, extend equipment lifespan, and ensure uninterrupted production.
- 3. Quality Assurance:** Pharmaceutical Plant Equipment Analysis Chonburi supports quality assurance efforts by monitoring equipment performance and identifying any deviations from established standards. Businesses can use this data to ensure consistent product quality, meet regulatory requirements, and maintain patient safety.
- 4. Compliance Management:** The analysis provides documentation and reporting that can assist businesses in meeting regulatory compliance requirements. By demonstrating adherence to industry standards and best practices, businesses can mitigate risks and ensure the integrity of their manufacturing processes.
- 5. Process Improvement:** Pharmaceutical Plant Equipment Analysis Chonburi helps businesses identify opportunities for process improvement by analyzing equipment data and identifying areas for optimization. By implementing process improvements, businesses can enhance overall efficiency, reduce costs, and improve product quality.

6. **Data-Driven Decision-Making:** The analysis provides data-driven insights that empower businesses to make informed decisions about their manufacturing operations. By leveraging data and analytics, businesses can optimize resource allocation, prioritize investments, and drive continuous improvement.

Pharmaceutical Plant Equipment Analysis Chonburi offers businesses a comprehensive solution to enhance equipment performance, ensure quality, improve compliance, and drive operational excellence in their pharmaceutical manufacturing operations.

API Payload Example

The payload describes a comprehensive service called "Pharmaceutical Plant Equipment Analysis Chonburi" that utilizes advanced data analytics and industry expertise to provide businesses with unparalleled insights into the performance and efficiency of their pharmaceutical manufacturing equipment.



DATA VISUALIZATION OF THE PAYLOADS FOCUS

This analysis offers a range of benefits and applications, empowering businesses to optimize their operations, ensure quality, improve compliance, and drive continuous improvement. Through equipment optimization, predictive maintenance, quality assurance, compliance management, process improvement, and data-driven decision-making, this service aims to provide businesses with the tools and insights they need to enhance equipment performance, ensure product quality, meet regulatory requirements, and drive operational excellence in their pharmaceutical manufacturing operations.

Sample 1

```
▼ [
  ▼ {
    "device_name": "Pharmaceutical Plant Equipment Analyzer",
    "sensor_id": "PP54321",
    ▼ "data": {
      "sensor_type": "Pharmaceutical Plant Equipment Analyzer",
      "location": "Chonburi, Thailand",
      "factory_name": "Mega Pharma",
      "plant_type": "Capsule Manufacturing",
      "equipment_type": "Capsule Filling Machine",
```

```
    "equipment_id": "CFM-200",
    "parameters": {
      "temperature": 22.5,
      "humidity": 55,
      "pressure": 100.5,
      "vibration": 0.3,
      "noise": 80,
      "power_consumption": 800,
      "production_output": 12000
    },
    "calibration_date": "2023-04-12",
    "calibration_status": "Valid"
  }
}
```

Sample 2

```
▼ [
  ▼ {
    "device_name": "Pharmaceutical Plant Equipment Analyzer",
    "sensor_id": "PP54321",
    ▼ "data": {
      "sensor_type": "Pharmaceutical Plant Equipment Analyzer",
      "location": "Chonburi, Thailand",
      "factory_name": "Apex Pharma",
      "plant_type": "Capsule Manufacturing",
      "equipment_type": "Capsule Filling Machine",
      "equipment_id": "CFM-200",
      ▼ "parameters": {
        "temperature": 22.5,
        "humidity": 55,
        "pressure": 100.5,
        "vibration": 0.3,
        "noise": 80,
        "power_consumption": 800,
        "production_output": 8000
      },
      "calibration_date": "2023-04-12",
      "calibration_status": "Valid"
    }
  }
]
```

Sample 3

```
▼ [
  ▼ {
    "device_name": "Pharmaceutical Plant Equipment Analyzer",
    "sensor_id": "PP67890",
    ▼ "data": {
```

```

    "sensor_type": "Pharmaceutical Plant Equipment Analyzer",
    "location": "Chonburi, Thailand",
    "factory_name": "Apex Pharma",
    "plant_type": "Capsule Manufacturing",
    "equipment_type": "Capsule Filling Machine",
    "equipment_id": "CFM-200",
    "parameters": {
      "temperature": 22.5,
      "humidity": 55,
      "pressure": 100.5,
      "vibration": 0.3,
      "noise": 80,
      "power_consumption": 800,
      "production_output": 12000
    },
    "calibration_date": "2023-04-12",
    "calibration_status": "Valid"
  }
}
]

```

Sample 4

```

▼ [
  ▼ {
    "device_name": "Pharmaceutical Plant Equipment Analyzer",
    "sensor_id": "PP12345",
    "data": {
      "sensor_type": "Pharmaceutical Plant Equipment Analyzer",
      "location": "Chonburi, Thailand",
      "factory_name": "Mega Pharma",
      "plant_type": "Tablet Manufacturing",
      "equipment_type": "Tablet Press",
      "equipment_id": "TP-100",
      "parameters": {
        "temperature": 25,
        "humidity": 60,
        "pressure": 101.3,
        "vibration": 0.5,
        "noise": 85,
        "power_consumption": 1000,
        "production_output": 10000
      },
      "calibration_date": "2023-03-08",
      "calibration_status": "Valid"
    }
  }
]

```

Meet Our Key Players in Project Management

Get to know the experienced leadership driving our project management forward: Sandeep Bharadwaj, a seasoned professional with a rich background in securities trading and technology entrepreneurship, and Stuart Dawsons, our Lead AI Engineer, spearheading innovation in AI solutions. Together, they bring decades of expertise to ensure the success of our projects.



Stuart Dawsons

Lead AI Engineer

Under Stuart Dawsons' leadership, our lead engineer, the company stands as a pioneering force in engineering groundbreaking AI solutions. Stuart brings to the table over a decade of specialized experience in machine learning and advanced AI solutions. His commitment to excellence is evident in our strategic influence across various markets. Navigating global landscapes, our core aim is to deliver inventive AI solutions that drive success internationally. With Stuart's guidance, expertise, and unwavering dedication to engineering excellence, we are well-positioned to continue setting new standards in AI innovation.



Sandeep Bharadwaj

Lead AI Consultant

As our lead AI consultant, Sandeep Bharadwaj brings over 29 years of extensive experience in securities trading and financial services across the UK, India, and Hong Kong. His expertise spans equities, bonds, currencies, and algorithmic trading systems. With leadership roles at DE Shaw, Tradition, and Tower Capital, Sandeep has a proven track record in driving business growth and innovation. His tenure at Tata Consultancy Services and Moody's Analytics further solidifies his proficiency in OTC derivatives and financial analytics. Additionally, as the founder of a technology company specializing in AI, Sandeep is uniquely positioned to guide and empower our team through its journey with our company. Holding an MBA from Manchester Business School and a degree in Mechanical Engineering from Manipal Institute of Technology, Sandeep's strategic insights and technical acumen will be invaluable assets in advancing our AI initiatives.