

The logo features a large, stylized 'A' in a vibrant purple color. To its right is a lowercase 'i' in white, which is slanted and has a white dot above it. The background of the entire image is a dark, atmospheric photograph of a railway station at night, with tracks receding into the distance and some illuminated signs on the platform buildings.

**Ai**

**ENGINEERING**

AIENGINEER.CO.IN

**Abstract:** People tracking with video empowers businesses with pragmatic solutions for monitoring and analyzing human movement in real-time or post-processing. Our expertise in developing and deploying these solutions enables businesses to enhance security, optimize operations, and improve customer experiences in diverse applications such as retail, transportation, hospitality, and event management. By analyzing video streams, we detect human motion to gather valuable insights, including foot traffic patterns, dwell times, and crowd densities. These insights help businesses optimize store layouts, improve security measures, enhance transportation efficiency, facilitate event management, personalize hospitality services, and increase workplace productivity.

## People Tracking with Video

People tracking with video is a powerful technology that enables businesses to monitor and track the movement and behavior of individuals within video footage in real-time or post-processing. By analyzing video streams and detecting human motion, businesses can gather valuable insights, enhance security, optimize operations, and improve customer experiences in various applications, including retail, transportation, hospitality, and event management.

This document aims to showcase the capabilities and expertise of our company in providing pragmatic solutions for people tracking with video. We will demonstrate our understanding of the technology, exhibit our skills in developing and deploying people tracking solutions, and highlight the benefits and applications that businesses can leverage to achieve their objectives.

Through this document, we will provide a comprehensive overview of people tracking with video, covering its key features, benefits, and applications. We will also present case studies and examples to illustrate how our solutions have helped businesses address real-world challenges and achieve their goals.

### SERVICE NAME

People Tracking with Video

### INITIAL COST RANGE

\$5,000 to \$20,000

### FEATURES

- Real-time and post-processing video analysis
- Human motion detection and tracking
- Retail analytics (foot traffic patterns, dwell times, browsing behaviors)
- Security and surveillance (suspicious activity detection, unauthorized access, security breaches)
- Transportation monitoring (passenger flow, congestion, safety)
- Event management (crowd control, attendee tracking, logistics optimization)
- Hospitality and customer service (guest movements, preferences, interactions)
- Workplace productivity (employee movements, activities, interactions)

### IMPLEMENTATION TIME

4-6 weeks

### CONSULTATION TIME

1-2 hours

### DIRECT

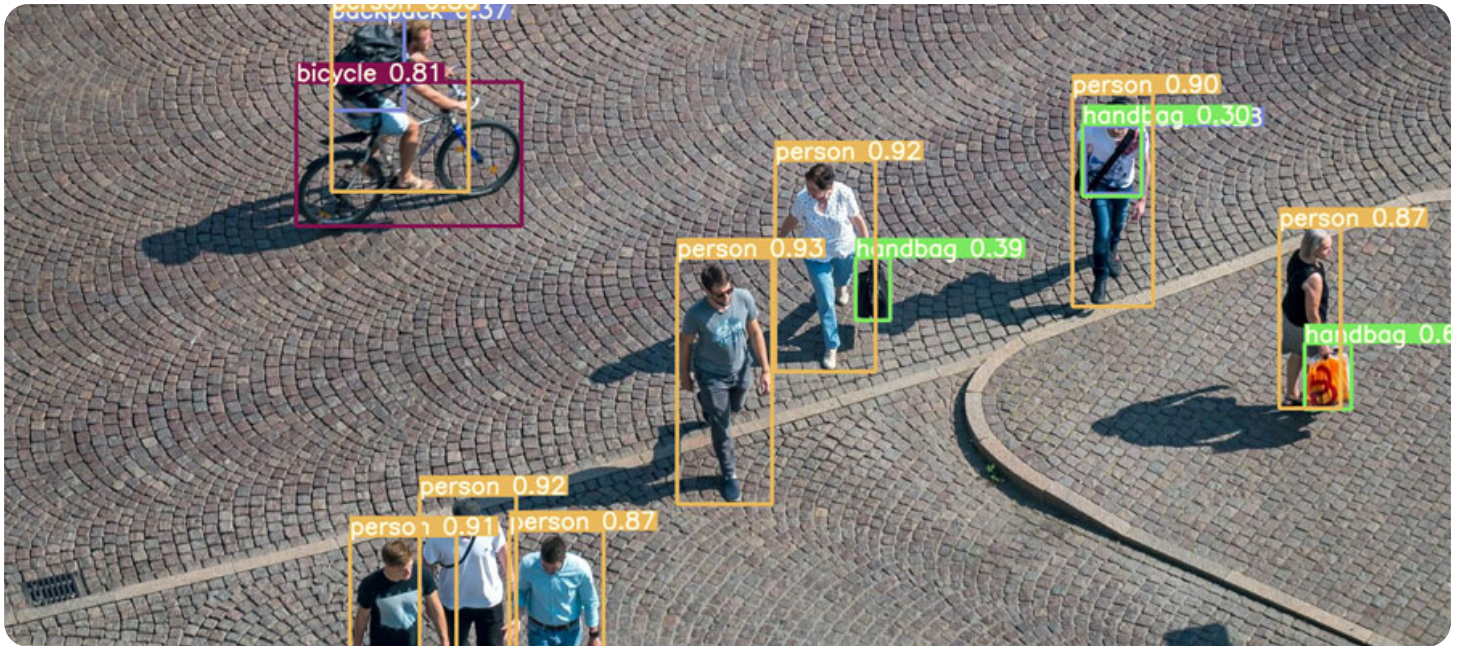
<https://aimlprogramming.com/services/people-tracking-with-video/>

### RELATED SUBSCRIPTIONS

- Standard Subscription
- Premium Subscription

### HARDWARE REQUIREMENT

- Camera 1
- Camera 2
- Camera 3



## People Tracking with Video for Businesses

People tracking with video is a technology that enables businesses to monitor and track the movement and behavior of individuals within video footage in real-time or post-processing. By analyzing video streams and detecting human motion, businesses can gather valuable insights, enhance security, optimize operations, and improve customer experiences in various applications, including retail, transportation, hospitality, and event management. Here are several key benefits and applications of people tracking with video for businesses:

- 1. Retail Analytics:** People tracking with video enhances retail analytics by monitoring and analyzing customer movements, behaviors, and interactions within retail environments, such as stores, malls, or shopping centers. By tracking foot traffic patterns, dwell times, and browsing behaviors, businesses can optimize store layouts, improve product placement, and enhance the overall shopping experience to increase sales and customer satisfaction.
- 2. Security and Surveillance:** People tracking with video enhances security and surveillance systems by monitoring and tracking the movement of individuals within monitored areas, such as office buildings, parking lots, or public spaces. By detecting suspicious activities, unauthorized access, or security breaches, businesses can enhance situational awareness, trigger alerts, and respond promptly to security incidents to protect personnel and assets.
- 3. Transportation Monitoring:** People tracking with video supports transportation monitoring and management efforts by monitoring passenger flow, congestion, and safety on public transportation systems, such as buses, trains, or subway stations. By tracking passenger movements and behavior, businesses can optimize service levels, improve crowd management, and enhance passenger safety and satisfaction in public transit networks.
- 4. Event Management:** People tracking with video facilitates event management and crowd control efforts by monitoring and tracking the movement of attendees, participants, and staff during events, concerts, or gatherings. By analyzing crowd densities, flow rates, and entry/exit points, businesses can optimize event logistics, ensure crowd safety, and enhance the overall event experience for organizers and attendees.

5. **Hospitality and Customer Service:** People tracking with video enables businesses in the hospitality industry to monitor and track guest movements, preferences, and interactions within hotel lobbies, restaurants, or entertainment venues. By analyzing guest behavior and preferences, businesses can personalize services, anticipate needs, and deliver exceptional customer experiences to enhance guest satisfaction and loyalty.
6. **Workplace Productivity:** People tracking with video supports workplace productivity initiatives by monitoring employee movements, activities, and interactions within office spaces, coworking areas, or manufacturing facilities. By analyzing workspace utilization, collaboration patterns, and workflow efficiency, businesses can optimize space allocation, improve team dynamics, and enhance productivity and employee satisfaction in the workplace.

People tracking with video offers businesses a range of benefits and applications, including retail analytics, security surveillance, transportation monitoring, event management, hospitality, and workplace productivity. By leveraging people tracking technology, businesses can gain valuable insights, improve operational efficiency, and enhance customer experiences in various domains and applications.

# API Payload Example

The payload is related to a service that provides people tracking with video. This technology allows businesses to monitor and track the movement and behavior of individuals within video footage in real-time or post-processing. By analyzing video streams and detecting human motion, businesses can gather valuable insights, enhance security, optimize operations, and improve customer experiences in various applications. The payload likely contains information about the service's capabilities, features, and benefits, as well as potential use cases and applications. It may also include technical specifications, pricing information, and instructions on how to use the service.

```
▼ [
  ▼ {
    "text": "<h3>People Tracking with Video for Businesses</h3> <p> People tracking with video is a technology that enables businesses to monitor and track the movement and behavior of individuals within video footage in real-time or post-processing. By analyzing video streams and detecting human motion, businesses can gather valuable insights, enhance security, optimize operations, and improve customer experiences in various applications, including retail, transportation, hospitality, and event management. Here are several key benefits and applications of people tracking with video for businesses: </p> <ol> <li><strong>Retail Analytics:</strong> People tracking with video enhances retail analytics by monitoring and analyzing customer movements, behaviors, and interactions within retail environments, such as stores, malls, or shopping centers. By tracking foot traffic patterns, dwell times, and browsing behaviors, businesses can optimize store layouts, improve product placement, and enhance the overall shopping experience to increase sales and customer satisfaction.</li> <li><strong>Security and Surveillance:</strong> People tracking with video enhances security and surveillance systems by monitoring and tracking the movement of individuals within monitored areas, such as office buildings, parking lots, or public spaces. By detecting suspicious activities, unauthorized access, or security breaches, businesses can enhance situational awareness, trigger alerts, and respond promptly to security incidents to protect personnel and assets.</li> <li><strong>Transportation Monitoring:</strong> People tracking with video supports transportation monitoring and management efforts by monitoring passenger flow, congestion, and safety on public transportation systems, such as buses, trains, or subway stations. By tracking passenger movements and behavior, businesses can optimize service levels, improve crowd management, and enhance passenger safety and satisfaction in public transit networks.</li> <li><strong>Event Management:</strong> People tracking with video facilitates event management and crowd control efforts by monitoring and tracking the movement of attendees, participants, and staff during events, concerts, or gatherings. By analyzing crowd densities, flow rates, and entry/exit points, businesses can optimize event logistics, ensure crowd safety, and enhance the overall event experience for organizers and attendees.</li> <li><strong>Hospitality and Customer Service:</strong> People tracking with video enables businesses in the hospitality industry to monitor and track guest movements, preferences, and interactions within hotel lobbies, restaurants, or entertainment venues. By analyzing guest behavior and preferences, businesses can personalize services, anticipate needs, and deliver exceptional customer experiences to enhance guest satisfaction and loyalty.</li> <li><strong>Workplace Productivity:</strong> People tracking with video supports workplace productivity initiatives by monitoring employee movements, activities, and interactions within office spaces, coworking areas, or manufacturing facilities. By analyzing workspace utilization, collaboration patterns, and workflow efficiency, businesses can optimize space allocation, improve team dynamics, and enhance productivity and
```

employee satisfaction in the workplace.</li> </ol> <p> People tracking with video offers businesses a range of benefits and applications, including retail analytics, security surveillance, transportation monitoring, event management, hospitality, and workplace productivity. By leveraging people tracking technology, businesses can gain valuable insights, improve operational efficiency, and enhance customer experiences in various domains and applications. </p> ",

"image": "/examples/images/people-tracking-with-video.jpg",

"keyword": "Video Object Tracking",

"introduction": "<div> <h1>People Tracking with Video</h1> <p> People tracking with video is a powerful technology that enables businesses to monitor and track the movement and behavior of individuals within video footage in real-time or post-processing. By analyzing video streams and detecting human motion, businesses can gather valuable insights, enhance security, optimize operations, and improve customer experiences in various applications, including retail, transportation, hospitality, and event management. </p> <p> This document aims to showcase the capabilities and expertise of our company in providing pragmatic solutions for people tracking with video. We will demonstrate our understanding of the technology, exhibit our skills in developing and deploying people tracking solutions, and highlight the benefits and applications that businesses can leverage to achieve their objectives. </p> <p> Through this document, we will provide a comprehensive overview of people tracking with video, covering its key features, benefits, and applications. We will also present case studies and examples to illustrate how our solutions have helped businesses address real-world challenges and achieve their goals. </p> </div>",

"abstract": "People tracking with video empowers businesses with pragmatic solutions for monitoring and analyzing human movement in real-time or post-processing. Our expertise in developing and deploying these solutions enables businesses to enhance security, optimize operations, and improve customer experiences in diverse applications such as retail, transportation, hospitality, and event management. By analyzing video streams, we detect human motion to gather valuable insights, including foot traffic patterns, dwell times, and crowd densities. These insights help businesses optimize store layouts, improve security measures, enhance transportation efficiency, facilitate event management, personalize hospitality services, and increase workplace productivity.",

"hardware": "<h1>Hardware Requirements for People Tracking with Video</h1> <h2>Camera 1</h2> <p>Camera 1 is designed for indoor use and has a wide field of view. This makes it ideal for tracking people in large areas, such as retail stores or warehouses.</p> <h2>Camera 2</h2> <p>Camera 2 is designed for outdoor use and has a narrower field of view. This makes it ideal for tracking people in smaller areas, such as doorways or hallways.</p> <h2>Camera 3</h2> <p>Camera 3 is designed for use in low-light conditions. This makes it ideal for tracking people in areas where there is not a lot of light, such as parking lots or alleyways.</p> <h2>How the Hardware is Used</h2> <ol> <li>The cameras capture video footage of the area being monitored.</li> <li>The video footage is sent to a server, where it is analyzed by the people tracking software.</li> <li>The people tracking software detects and tracks the movement of people in the video footage.</li> <li>The data from the people tracking software can be used to generate reports, create alerts, or trigger other actions.</li> </ol> <h2>Benefits of Using the Hardware</h2> <ul> <li>Improved security: The hardware can be used to detect and track suspicious activity, such as people loitering or entering restricted areas.</li> <li>Enhanced customer service: The hardware can be used to track customer behavior, such as how long they spend in a store or what products they look at. This information can be used to improve customer service and marketing campaigns.</li> <li>Optimized operations: The hardware can be used to track employee productivity and identify areas where operations can be improved.</li> </ul>",

"license": "<h1>People Tracking with Video Licensing</h1> <h2>Standard Subscription</h2> <p>The Standard Subscription includes access to all of the features of the People Tracking with Video service. This includes:</p> <ol> <li>Real-time and post-processing video analysis</li> <li>Human motion detection and tracking</li> <li>Retail analytics (foot traffic patterns, dwell times, browsing behaviors)</li> <li>Security and surveillance (suspicious activity detection, unauthorized access, security breaches)</li> <li>Transportation monitoring (passenger flow, congestion, safety)</li> <li>Event management (crowd control, attendee tracking, logistics optimization)</li> <li>Hospitality and

customer service (guest movements, preferences, interactions)</li> <li>Workplace productivity (employee movements, activities, interactions)</li> </ol> <p>The Standard Subscription is priced at \$1,000 per month.</p> <h2>Premium Subscription</h2> <p>The Premium Subscription includes access to all of the features of the Standard Subscription, plus additional features such as:</p> <ol> <li>Advanced analytics and reporting</li> <li>Customizable dashboards</li> <li>API access</li> <li>Dedicated support</li> </ol> <p>The Premium Subscription is priced at \$1,500 per month.</p> <h2>License Types</h2> <p>We offer two types of licenses for our People Tracking with Video service:</p> <ol> <li><strong>Single-site license:</strong> This license allows you to use the service at a single location.</li> <li><strong>Multi-site license:</strong> This license allows you to use the service at multiple locations.</li> </ol> <p>The cost of a license will vary depending on the number of locations you need to cover.</p> <h2>Ongoing Support and Improvement Packages</h2> <p>In addition to our monthly subscription fees, we also offer a variety of ongoing support and improvement packages. These packages can help you get the most out of your People Tracking with Video service and ensure that it is always up-to-date with the latest features and functionality.</p> <p>Our ongoing support and improvement packages include:</p> <ol> <li><strong>Technical support:</strong> We provide 24/7 technical support to help you troubleshoot any issues you may encounter with your People Tracking with Video service.</li> <li><strong>Software updates:</strong> We regularly release software updates for our People Tracking with Video service. These updates include new features, bug fixes, and performance improvements.</li> <li><strong>Hardware maintenance:</strong> We offer hardware maintenance contracts to help you keep your People Tracking with Video hardware up and running.</li> <li><strong>Custom development:</strong> We can develop custom software solutions to help you integrate your People Tracking with Video service with your existing systems.</li> </ol> <p>The cost of our ongoing support and improvement packages will vary depending on the specific services you need.</p> <h2>Contact Us</h2> <p>To learn more about our People Tracking with Video service or to purchase a license, please contact us today.</p>

"timelines": "<h1>People Tracking with Video: Project Timeline and Costs</h1> <h2>Timeline</h2> <ol> <li><strong>Consultation Period:</strong> 1-2 hours</li> <p>During this period, we will work with you to understand your specific needs and requirements. We will also provide you with a detailed proposal outlining the scope of work, timeline, and cost.</p> <li><strong>Implementation:</strong> 4-6 weeks</li> <p>The time to implement this service will vary depending on the size and complexity of your project. However, we typically estimate 4-6 weeks for a complete implementation.</p> </ol> <h2>Costs</h2> <p>The cost of this service will vary depending on the size and complexity of your project. However, we typically estimate a cost range of <strong>\$5,000-\$20,000</strong> for a complete implementation.</p> <h3>Hardware Costs</h3> <p>If hardware is required, you will need to purchase cameras that are capable of capturing high-quality video footage. We recommend using a camera that has a wide field of view and a high frame rate.</p> <p>We offer a range of camera models to choose from, with prices ranging from <strong>\$1,000-\$2,000</strong> per camera.</p> <h3>Subscription Costs</h3> <p>You will also need to purchase a subscription to our service. We offer two subscription plans:</p> <ul> <li><strong>Standard Subscription:</strong> \$1,000/month</li> <p>This subscription includes access to all of the features of the People Tracking with Video service.</p> <li><strong>Premium Subscription:</strong> \$1,500/month</li> <p>This subscription includes access to all of the features of the Standard Subscription, plus additional features such as advanced analytics and reporting.</p> </ul> <h3>Additional Costs</h3> <p>There may be additional costs associated with your project, such as:</p> <ul> <li>Installation costs</li> <li>Training costs</li> <li>Integration costs</li> </ul> <p>We will work with you to determine the total cost of your project and provide you with a detailed proposal before any work begins.</p>

"payload\_description": "The payload is related to a service that provides people tracking with video. This technology allows businesses to monitor and track the movement and behavior of individuals within video footage in real-time or post-processing. By analyzing video streams and detecting human motion, businesses can gather valuable insights, enhance security, optimize operations, and improve customer experiences in various applications. The payload likely contains information about the service's capabilities, features, and benefits, as well as



potential use cases and applications. It may also include technical specifications, pricing information, and instructions on how to use the service."

```
▼ "examples": [  
  "/examples/obj5.mp4",  
  "/examples/obj9.mp4",  
  "/examples/obj11.mp4"  
],  
▼ "highlevel": {  
  "service_name": "People Tracking with Video",  
  "description": "People tracking with video is a technology that enables  
businesses to monitor and track the movement and behavior of individuals within  
video footage in real-time or post-processing. By analyzing video streams and  
detecting human motion, businesses can gather valuable insights, enhance  
security, optimize operations, and improve customer experiences in various  
applications, including retail, transportation, hospitality, and event  
management.",  
  ▼ "time_to_implement": {  
    "estimate": "4-6 weeks",  
    "details_of_time_implementation": "The time to implement this service will  
vary depending on the size and complexity of your project. However, we  
typically estimate 4-6 weeks for a complete implementation."  
  },  
  ▼ "consultation_period": {  
    "duration": "1-2 hours",  
    "details_of_consultation_process": "During the consultation period, we will  
work with you to understand your specific needs and requirements. We will  
also provide you with a detailed proposal outlining the scope of work,  
timeline, and cost."  
  },  
  ▼ "high_level_features": [  
    "Real-time and post-processing video analysis",  
    "Human motion detection and tracking",  
    "Retail analytics (foot traffic patterns, dwell times, browsing behaviors)",  
    "Security and surveillance (suspicious activity detection, unauthorized  
access, security breaches)",  
    "Transportation monitoring (passenger flow, congestion, safety)",  
    "Event management (crowd control, attendee tracking, logistics  
optimization)",  
    "Hospitality and customer service (guest movements, preferences,  
interactions)",  
    "Workplace productivity (employee movements, activities, interactions)"  
  ],  
  ▼ "is_hardware_required": {  
    "required": true,  
    "hardware_topic": "People tracking with video",  
    ▼ "hardware_models_available": [  
      ▼ {  
        "model": "Camera 1",  
        "description": "This camera is designed for indoor use and has a wide  
field of view.",  
        "price": "$1,000"  
      },  
      ▼ {  
        "model": "Camera 2",  
        "description": "This camera is designed for outdoor use and has a  
narrower field of view.",  
        "price": "$1,500"  
      },  
      ▼ {  
        "model": "Camera 3",
```

```
    "description": "This camera is designed for use in low-light conditions.",
    "price": "$2,000"
  }
]
},
▼ "is_subscription_required": {
  "required": true,
  ▼ "subscription_names": [
    ▼ {
      "name": "Standard Subscription",
      "description": "This subscription includes access to all of the features of the People Tracking with Video service.",
      "price": "$1,000/month"
    },
    ▼ {
      "name": "Premium Subscription",
      "description": "This subscription includes access to all of the features of the Standard Subscription, plus additional features such as advanced analytics and reporting.",
      "price": "$1,500/month"
    }
  ]
},
▼ "cost_range": {
  "price_range_explained": "The cost of this service will vary depending on the size and complexity of your project. However, we typically estimate a cost range of $5,000-$20,000 for a complete implementation.",
  "min": "5000",
  "max": "20000",
  "currency": "USD"
},
▼ "faq": [
  ▼ {
    "question": "How does people tracking with video work?",
    "answer": "People tracking with video works by analyzing video streams and detecting human motion. This is done using a variety of computer vision techniques, such as object detection, tracking, and classification."
  },
  ▼ {
    "question": "What are the benefits of using people tracking with video?",
    "answer": "People tracking with video offers a number of benefits, including: improved security, enhanced customer service, optimized operations, and increased productivity."
  },
  ▼ {
    "question": "How much does people tracking with video cost?",
    "answer": "The cost of people tracking with video will vary depending on the size and complexity of your project. However, we typically estimate a cost range of $5,000-$20,000 for a complete implementation."
  },
  ▼ {
    "question": "How long does it take to implement people tracking with video?",
    "answer": "The time to implement people tracking with video will vary depending on the size and complexity of your project. However, we typically estimate 4-6 weeks for a complete implementation."
  },
  ▼ {
```

```
    "question": "What are the hardware requirements for people tracking with video?",  
    "answer": "People tracking with video requires a camera that is capable of capturing high-quality video footage. We recommend using a camera that has a wide field of view and a high frame rate."  
  }  
]  
,  
"name": "People Tracking with Video"  
}  
]
```

# People Tracking with Video Licensing

## Standard Subscription

The Standard Subscription includes access to all of the features of the People Tracking with Video service. This includes:

1. Real-time and post-processing video analysis
2. Human motion detection and tracking
3. Retail analytics (foot traffic patterns, dwell times, browsing behaviors)
4. Security and surveillance (suspicious activity detection, unauthorized access, security breaches)
5. Transportation monitoring (passenger flow, congestion, safety)
6. Event management (crowd control, attendee tracking, logistics optimization)
7. Hospitality and customer service (guest movements, preferences, interactions)
8. Workplace productivity (employee movements, activities, interactions)

The Standard Subscription is priced at \$1,000 per month.

## Premium Subscription

The Premium Subscription includes access to all of the features of the Standard Subscription, plus additional features such as:

1. Advanced analytics and reporting
2. Customizable dashboards
3. API access
4. Dedicated support

The Premium Subscription is priced at \$1,500 per month.

## License Types

We offer two types of licenses for our People Tracking with Video service:

1. **Single-site license:** This license allows you to use the service at a single location.
2. **Multi-site license:** This license allows you to use the service at multiple locations.

The cost of a license will vary depending on the number of locations you need to cover.

## Ongoing Support and Improvement Packages

In addition to our monthly subscription fees, we also offer a variety of ongoing support and improvement packages. These packages can help you get the most out of your People Tracking with Video service and ensure that it is always up-to-date with the latest features and functionality.

Our ongoing support and improvement packages include:

1. **Technical support:** We provide 24/7 technical support to help you troubleshoot any issues you may encounter with your People Tracking with Video service.
2. **Software updates:** We regularly release software updates for our People Tracking with Video service. These updates include new features, bug fixes, and performance improvements.
3. **Hardware maintenance:** We offer hardware maintenance contracts to help you keep your People Tracking with Video hardware up and running.
4. **Custom development:** We can develop custom software solutions to help you integrate your People Tracking with Video service with your existing systems.

The cost of our ongoing support and improvement packages will vary depending on the specific services you need.

## Contact Us

To learn more about our People Tracking with Video service or to purchase a license, please contact us today.

# Hardware Requirements for People Tracking with Video

## Camera 1

Camera 1 is designed for indoor use and has a wide field of view. This makes it ideal for tracking people in large areas, such as retail stores or warehouses.

## Camera 2

Camera 2 is designed for outdoor use and has a narrower field of view. This makes it ideal for tracking people in smaller areas, such as doorways or hallways.

## Camera 3

Camera 3 is designed for use in low-light conditions. This makes it ideal for tracking people in areas where there is not a lot of light, such as parking lots or alleyways.

## How the Hardware is Used

1. The cameras capture video footage of the area being monitored.
2. The video footage is sent to a server, where it is analyzed by the people tracking software.
3. The people tracking software detects and tracks the movement of people in the video footage.
4. The data from the people tracking software can be used to generate reports, create alerts, or trigger other actions.

## Benefits of Using the Hardware

- **Improved security:** The hardware can be used to detect and track suspicious activity, such as people loitering or entering restricted areas.
- **Enhanced customer service:** The hardware can be used to track customer behavior, such as how long they spend in a store or what products they look at. This information can be used to improve customer service and marketing campaigns.
- **Optimized operations:** The hardware can be used to track employee productivity and identify areas where operations can be improved.

# Frequently Asked Questions: People Tracking with Video

## How does people tracking with video work?

People tracking with video works by analyzing video streams and detecting human motion. This is done using a variety of computer vision techniques, such as object detection, tracking, and classification.

---

## What are the benefits of using people tracking with video?

People tracking with video offers a number of benefits, including: improved security, enhanced customer service, optimized operations, and increased productivity.

---

## How much does people tracking with video cost?

The cost of people tracking with video will vary depending on the size and complexity of your project. However, we typically estimate a cost range of \$5,000-\$20,000 for a complete implementation.

---

## How long does it take to implement people tracking with video?

The time to implement people tracking with video will vary depending on the size and complexity of your project. However, we typically estimate 4-6 weeks for a complete implementation.

---

## What are the hardware requirements for people tracking with video?

People tracking with video requires a camera that is capable of capturing high-quality video footage. We recommend using a camera that has a wide field of view and a high frame rate.

---

# People Tracking with Video: Project Timeline and Costs

## Timeline

### 1. Consultation Period: 1-2 hours

During this period, we will work with you to understand your specific needs and requirements. We will also provide you with a detailed proposal outlining the scope of work, timeline, and cost.

### 2. Implementation: 4-6 weeks

The time to implement this service will vary depending on the size and complexity of your project. However, we typically estimate 4-6 weeks for a complete implementation.

## Costs

The cost of this service will vary depending on the size and complexity of your project. However, we typically estimate a cost range of **\$5,000-\$20,000** for a complete implementation.

### Hardware Costs

If hardware is required, you will need to purchase cameras that are capable of capturing high-quality video footage. We recommend using a camera that has a wide field of view and a high frame rate.

We offer a range of camera models to choose from, with prices ranging from **\$1,000-\$2,000** per camera.

### Subscription Costs

You will also need to purchase a subscription to our service. We offer two subscription plans:

- **Standard Subscription:** \$1,000/month

This subscription includes access to all of the features of the People Tracking with Video service.

- **Premium Subscription:** \$1,500/month

This subscription includes access to all of the features of the Standard Subscription, plus additional features such as advanced analytics and reporting.

### Additional Costs

There may be additional costs associated with your project, such as:

- Installation costs
- Training costs
- Integration costs



We will work with you to determine the total cost of your project and provide you with a detailed proposal before any work begins.

## Meet Our Key Players in Project Management

Get to know the experienced leadership driving our project management forward: Sandeep Bharadwaj, a seasoned professional with a rich background in securities trading and technology entrepreneurship, and Stuart Dawsons, our Lead AI Engineer, spearheading innovation in AI solutions. Together, they bring decades of expertise to ensure the success of our projects.



### Stuart Dawsons

#### Lead AI Engineer

Under Stuart Dawsons' leadership, our lead engineer, the company stands as a pioneering force in engineering groundbreaking AI solutions. Stuart brings to the table over a decade of specialized experience in machine learning and advanced AI solutions. His commitment to excellence is evident in our strategic influence across various markets. Navigating global landscapes, our core aim is to deliver inventive AI solutions that drive success internationally. With Stuart's guidance, expertise, and unwavering dedication to engineering excellence, we are well-positioned to continue setting new standards in AI innovation.



### Sandeep Bharadwaj

#### Lead AI Consultant

As our lead AI consultant, Sandeep Bharadwaj brings over 29 years of extensive experience in securities trading and financial services across the UK, India, and Hong Kong. His expertise spans equities, bonds, currencies, and algorithmic trading systems. With leadership roles at DE Shaw, Tradition, and Tower Capital, Sandeep has a proven track record in driving business growth and innovation. His tenure at Tata Consultancy Services and Moody's Analytics further solidifies his proficiency in OTC derivatives and financial analytics. Additionally, as the founder of a technology company specializing in AI, Sandeep is uniquely positioned to guide and empower our team through its journey with our company. Holding an MBA from Manchester Business School and a degree in Mechanical Engineering from Manipal Institute of Technology, Sandeep's strategic insights and technical acumen will be invaluable assets in advancing our AI initiatives.