



# SERVICE GUIDE

DETAILED INFORMATION ABOUT WHAT WE OFFER

# Ai

[AIMLPROGRAMMING.COM](http://AIMLPROGRAMMING.COM)

**Abstract:** Pharmaceutical Plant Equipment Analysis Chonburi is a data-driven service that provides businesses with actionable insights to optimize equipment performance, predict maintenance needs, ensure quality, improve compliance, and drive process improvement. By leveraging advanced data analytics and industry expertise, this analysis empowers businesses to make informed decisions, reduce downtime, extend equipment lifespan, and enhance overall efficiency. The service supports quality assurance efforts, compliance management, and continuous improvement initiatives, enabling businesses to meet regulatory requirements, maintain patient safety, and achieve operational excellence in their pharmaceutical manufacturing operations.

## Pharmaceutical Plant Equipment Analysis Chonburi

Pharmaceutical Plant Equipment Analysis Chonburi is a comprehensive service designed to provide businesses with unparalleled insights into the performance and efficiency of their pharmaceutical manufacturing equipment. This analysis leverages advanced data analytics and industry expertise to deliver a range of benefits and applications, empowering businesses to optimize their operations, ensure quality, improve compliance, and drive continuous improvement.

This document showcases the capabilities and understanding of our team in Pharmaceutical plant equipment analysis chonburi. We aim to exhibit our skills and expertise in this domain, demonstrating how we can provide pragmatic solutions to complex issues through coded solutions.

Through this analysis, we will provide businesses with:

- 1. Equipment Optimization:** Identify areas for improvement and optimization in manufacturing processes, pinpointing bottlenecks, reducing downtime, and maximizing production efficiency.
- 2. Predictive Maintenance:** Provide predictive maintenance insights, enabling businesses to proactively identify potential equipment failures and schedule maintenance accordingly, minimizing unplanned downtime and extending equipment lifespan.
- 3. Quality Assurance:** Support quality assurance efforts by monitoring equipment performance and identifying deviations from established standards, ensuring consistent product quality, meeting regulatory requirements, and maintaining patient safety.
- 4. Compliance Management:** Provide documentation and reporting to assist businesses in meeting regulatory compliance requirements, demonstrating adherence to

### SERVICE NAME

Pharmaceutical Plant Equipment Analysis Chonburi

### INITIAL COST RANGE

\$10,000 to \$20,000

### FEATURES

- Equipment Optimization
- Predictive Maintenance
- Quality Assurance
- Compliance Management
- Process Improvement
- Data-Driven Decision-Making

### IMPLEMENTATION TIME

6-8 weeks

### CONSULTATION TIME

1-2 hours

### DIRECT

<https://aimlprogramming.com/services/pharmaceutical-plant-equipment-analysis-chonburi/>

### RELATED SUBSCRIPTIONS

- Ongoing support license
- Data analytics license
- Equipment monitoring license

### HARDWARE REQUIREMENT

Yes

industry standards and best practices, mitigating risks, and ensuring the integrity of manufacturing processes.

5. **Process Improvement:** Identify opportunities for process improvement by analyzing equipment data and identifying areas for optimization, enhancing overall efficiency, reducing costs, and improving product quality.
6. **Data-Driven Decision-Making:** Provide data-driven insights that empower businesses to make informed decisions about their manufacturing operations, leveraging data and analytics to optimize resource allocation, prioritize investments, and drive continuous improvement.

Our Pharmaceutical Plant Equipment Analysis Chonburi offers a comprehensive solution to enhance equipment performance, ensure quality, improve compliance, and drive operational excellence in pharmaceutical manufacturing operations.



## Pharmaceutical Plant Equipment Analysis Chonburi

Pharmaceutical Plant Equipment Analysis Chonburi is a comprehensive service that provides businesses with detailed insights into the performance and efficiency of their pharmaceutical manufacturing equipment. By leveraging advanced data analytics and industry expertise, this analysis offers several key benefits and applications for businesses:

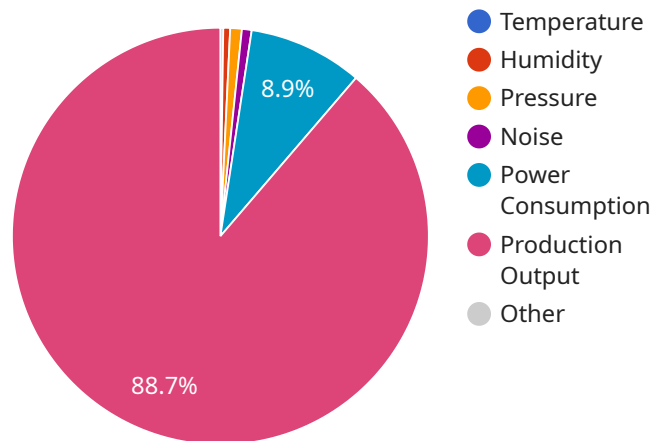
- 1. Equipment Optimization:** Pharmaceutical Plant Equipment Analysis Chonburi helps businesses identify areas for improvement and optimization in their manufacturing processes. By analyzing equipment data, businesses can pinpoint bottlenecks, reduce downtime, and maximize production efficiency, leading to increased productivity and cost savings.
- 2. Predictive Maintenance:** The analysis provides predictive maintenance insights, enabling businesses to proactively identify potential equipment failures and schedule maintenance accordingly. By predicting and addressing maintenance needs before they become critical, businesses can minimize unplanned downtime, extend equipment lifespan, and ensure uninterrupted production.
- 3. Quality Assurance:** Pharmaceutical Plant Equipment Analysis Chonburi supports quality assurance efforts by monitoring equipment performance and identifying any deviations from established standards. Businesses can use this data to ensure consistent product quality, meet regulatory requirements, and maintain patient safety.
- 4. Compliance Management:** The analysis provides documentation and reporting that can assist businesses in meeting regulatory compliance requirements. By demonstrating adherence to industry standards and best practices, businesses can mitigate risks and ensure the integrity of their manufacturing processes.
- 5. Process Improvement:** Pharmaceutical Plant Equipment Analysis Chonburi helps businesses identify opportunities for process improvement by analyzing equipment data and identifying areas for optimization. By implementing process improvements, businesses can enhance overall efficiency, reduce costs, and improve product quality.
- 6. Data-Driven Decision-Making:** The analysis provides data-driven insights that empower businesses to make informed decisions about their manufacturing operations. By leveraging

data and analytics, businesses can optimize resource allocation, prioritize investments, and drive continuous improvement.

Pharmaceutical Plant Equipment Analysis Chonburi offers businesses a comprehensive solution to enhance equipment performance, ensure quality, improve compliance, and drive operational excellence in their pharmaceutical manufacturing operations.

# API Payload Example

The payload describes a comprehensive service called "Pharmaceutical Plant Equipment Analysis Chonburi" that utilizes advanced data analytics and industry expertise to provide businesses with unparalleled insights into the performance and efficiency of their pharmaceutical manufacturing equipment.



DATA VISUALIZATION OF THE PAYLOADS FOCUS

This analysis offers a range of benefits and applications, empowering businesses to optimize their operations, ensure quality, improve compliance, and drive continuous improvement. Through equipment optimization, predictive maintenance, quality assurance, compliance management, process improvement, and data-driven decision-making, this service aims to provide businesses with the tools and insights they need to enhance equipment performance, ensure product quality, meet regulatory requirements, and drive operational excellence in their pharmaceutical manufacturing operations.

```
▼ [
  ▼ {
    "device_name": "Pharmaceutical Plant Equipment Analyzer",
    "sensor_id": "PP12345",
    ▼ "data": {
      "sensor_type": "Pharmaceutical Plant Equipment Analyzer",
      "location": "Chonburi, Thailand",
      "factory_name": "Mega Pharma",
      "plant_type": "Tablet Manufacturing",
      "equipment_type": "Tablet Press",
      "equipment_id": "TP-100",
      ▼ "parameters": {
        "temperature": 25,
        "humidity": 60,
        "pressure": 101.3,
```

```
"vibration": 0.5,  
"noise": 85,  
"power_consumption": 1000,  
"production_output": 10000  
},  
"calibration_date": "2023-03-08",  
"calibration_status": "Valid"
```

```
}
```

```
}
```

```
]
```

# Pharmaceutical Plant Equipment Analysis Chonburi Licensing

Pharmaceutical Plant Equipment Analysis Chonburi is a comprehensive service that provides businesses with detailed insights into the performance and efficiency of their pharmaceutical manufacturing equipment. This analysis leverages advanced data analytics and industry expertise to deliver a range of benefits and applications, empowering businesses to optimize their operations, ensure quality, improve compliance, and drive continuous improvement.

## Licensing

Pharmaceutical Plant Equipment Analysis Chonburi is offered on a subscription basis. This subscription includes access to our software platform, data analytics services, and ongoing support.

There are three types of licenses available:

1. **Ongoing support license:** This license provides access to our team of experts for ongoing support and maintenance. This includes:
  - Technical support
  - Software updates
  - Security patches
2. **Data analytics license:** This license provides access to our data analytics platform. This platform allows businesses to analyze their manufacturing data and identify areas for improvement.
3. **Equipment monitoring license:** This license provides access to our equipment monitoring software. This software allows businesses to monitor their equipment in real-time and identify potential problems.

The cost of each license varies depending on the size and complexity of the manufacturing operation. However, our pricing is competitive and tailored to meet the needs of each individual business.

## Benefits of Licensing

There are many benefits to licensing Pharmaceutical Plant Equipment Analysis Chonburi. These benefits include:

- **Access to our team of experts:** Our team of experts is available to help businesses with all aspects of Pharmaceutical Plant Equipment Analysis Chonburi. This includes:
  - Implementation
  - Training
  - Troubleshooting
- **Access to our data analytics platform:** Our data analytics platform provides businesses with the tools they need to analyze their manufacturing data and identify areas for improvement.
- **Access to our equipment monitoring software:** Our equipment monitoring software allows businesses to monitor their equipment in real-time and identify potential problems.
- **Reduced downtime:** Pharmaceutical Plant Equipment Analysis Chonburi can help businesses reduce downtime by identifying potential problems before they occur.
- **Improved quality:** Pharmaceutical Plant Equipment Analysis Chonburi can help businesses improve quality by identifying deviations from established standards.



- **Increased compliance:** Pharmaceutical Plant Equipment Analysis Chonburi can help businesses meet regulatory compliance requirements.
- **Lower costs:** Pharmaceutical Plant Equipment Analysis Chonburi can help businesses lower costs by identifying areas for improvement.

Pharmaceutical Plant Equipment Analysis Chonburi is a valuable tool for businesses that want to improve the performance and efficiency of their pharmaceutical manufacturing operations. By licensing Pharmaceutical Plant Equipment Analysis Chonburi, businesses can gain access to our team of experts, our data analytics platform, and our equipment monitoring software. This can help businesses reduce downtime, improve quality, increase compliance, and lower costs.

# Frequently Asked Questions:

## What are the benefits of Pharmaceutical Plant Equipment Analysis Chonburi?

Pharmaceutical Plant Equipment Analysis Chonburi offers several key benefits, including equipment optimization, predictive maintenance, quality assurance, compliance management, process improvement, and data-driven decision-making.

---

## How long does it take to implement Pharmaceutical Plant Equipment Analysis Chonburi?

The time to implement Pharmaceutical Plant Equipment Analysis Chonburi can vary depending on the size and complexity of the manufacturing operation. However, our team of experienced engineers and data scientists will work closely with your team to ensure a smooth and efficient implementation process.

---

## What is the cost of Pharmaceutical Plant Equipment Analysis Chonburi?

The cost of Pharmaceutical Plant Equipment Analysis Chonburi varies depending on the size and complexity of the manufacturing operation, as well as the specific features and services required. However, our pricing is competitive and tailored to meet the needs of each individual business.

---

## What are the hardware requirements for Pharmaceutical Plant Equipment Analysis Chonburi?

Pharmaceutical Plant Equipment Analysis Chonburi requires access to manufacturing equipment data. This data can be collected through a variety of methods, such as sensors, PLCs, and historians.

---

## What is the subscription model for Pharmaceutical Plant Equipment Analysis Chonburi?

Pharmaceutical Plant Equipment Analysis Chonburi is offered on a subscription basis. This subscription includes access to our software platform, data analytics services, and ongoing support.

---

# Pharmaceutical Plant Equipment Analysis Chonburi

## Timeline and Costs

### Timelines

#### 1. Consultation Period: 1-2 hours

During this period, our team will discuss your specific needs and objectives, and conduct an assessment of your manufacturing equipment and data to determine the best approach for your analysis.

#### 2. Implementation: 6-8 weeks

The implementation time may vary depending on the size and complexity of your manufacturing operation. Our team will work closely with you to ensure a smooth and efficient process.

### Costs

The cost range for Pharmaceutical Plant Equipment Analysis Chonburi is **USD 10,000 - 20,000**.

The cost varies depending on the following factors:

- Size and complexity of your manufacturing operation
- Specific features and services required

Our pricing is competitive and tailored to meet the needs of each individual business.

### Subscription Model

Pharmaceutical Plant Equipment Analysis Chonburi is offered on a subscription basis. This subscription includes access to our software platform, data analytics services, and ongoing support.

# Meet Our Key Players in Project Management

Get to know the experienced leadership driving our project management forward: Sandeep Bharadwaj, a seasoned professional with a rich background in securities trading and technology entrepreneurship, and Stuart Dawsons, our Lead AI Engineer, spearheading innovation in AI solutions. Together, they bring decades of expertise to ensure the success of our projects.



## Stuart Dawsons

### Lead AI Engineer

Under Stuart Dawsons' leadership, our lead engineer, the company stands as a pioneering force in engineering groundbreaking AI solutions. Stuart brings to the table over a decade of specialized experience in machine learning and advanced AI solutions. His commitment to excellence is evident in our strategic influence across various markets. Navigating global landscapes, our core aim is to deliver inventive AI solutions that drive success internationally. With Stuart's guidance, expertise, and unwavering dedication to engineering excellence, we are well-positioned to continue setting new standards in AI innovation.



## Sandeep Bharadwaj

### Lead AI Consultant

As our lead AI consultant, Sandeep Bharadwaj brings over 29 years of extensive experience in securities trading and financial services across the UK, India, and Hong Kong. His expertise spans equities, bonds, currencies, and algorithmic trading systems. With leadership roles at DE Shaw, Tradition, and Tower Capital, Sandeep has a proven track record in driving business growth and innovation. His tenure at Tata Consultancy Services and Moody's Analytics further solidifies his proficiency in OTC derivatives and financial analytics. Additionally, as the founder of a technology company specializing in AI, Sandeep is uniquely positioned to guide and empower our team through its journey with our company. Holding an MBA from Manchester Business School and a degree in Mechanical Engineering from Manipal Institute of Technology, Sandeep's strategic insights and technical acumen will be invaluable assets in advancing our AI initiatives.