



# SERVICE GUIDE

DETAILED INFORMATION ABOUT WHAT WE OFFER

**Ai**

[AIMLPROGRAMMING.COM](https://aimlprogramming.com)

**Abstract:** Samui Tire Pressure Monitoring (TPMS) is an advanced solution that provides businesses with real-time monitoring and management of vehicle tire pressure. Through wireless sensors and cloud-based analytics, Samui TPMS enables fleet management, optimizes fuel efficiency, enhances safety and compliance, extends tire life, and offers remote monitoring capabilities. By leveraging data analytics, businesses gain insights into tire pressure trends, enabling them to identify areas for improvement, optimize maintenance schedules, and make informed decisions to enhance fleet performance.

# Samui Tire Pressure Monitoring

Samui Tire Pressure Monitoring (TPMS) is an advanced technological solution designed to empower businesses with real-time monitoring and management capabilities for their vehicle tire pressure. This document serves as an introduction to the comprehensive capabilities of Samui TPMS, showcasing its benefits, applications, and the expertise of our team in providing pragmatic solutions to tire pressure management challenges.

Through the utilization of wireless sensors and cloud-based analytics, Samui TPMS offers a comprehensive fleet management system that enables businesses to:

- Optimize tire maintenance and minimize downtime
- Enhance fuel efficiency by maintaining optimal tire pressure
- Ensure vehicle safety and compliance by preventing underinflation or overinflation
- Extend tire life by identifying and addressing pressure issues early on
- Streamline operations with remote monitoring capabilities
- Gain valuable insights through data analytics for informed decision-making

By leveraging Samui TPMS, businesses can unlock a range of benefits that contribute to improved fleet management, cost reduction, and enhanced safety and efficiency. Our team of experts is dedicated to providing customized solutions tailored to the unique needs of each business, ensuring optimal performance and maximizing the value of their tire pressure monitoring systems.

## SERVICE NAME

Samui Tire Pressure Monitoring

## INITIAL COST RANGE

\$1,000 to \$5,000

## FEATURES

- Real-time tire pressure monitoring
- Fleet management and optimization
- Fuel efficiency improvement
- Enhanced safety and compliance
- Tire life extension
- Remote monitoring and data analytics

## IMPLEMENTATION TIME

4-6 weeks

## CONSULTATION TIME

1-2 hours

## DIRECT

<https://aimlprogramming.com/services/samui-tire-pressure-monitoring/>

## RELATED SUBSCRIPTIONS

- Samui TPMS Standard Subscription
- Samui TPMS Premium Subscription

## HARDWARE REQUIREMENT

- Samui TPMS Sensor
- Samui TPMS Gateway



## Samui Tire Pressure Monitoring

Samui Tire Pressure Monitoring (TPMS) is an advanced technology that enables businesses to monitor and manage the tire pressure of their vehicles in real-time. By leveraging wireless sensors and cloud-based analytics, Samui TPMS offers several key benefits and applications for businesses:

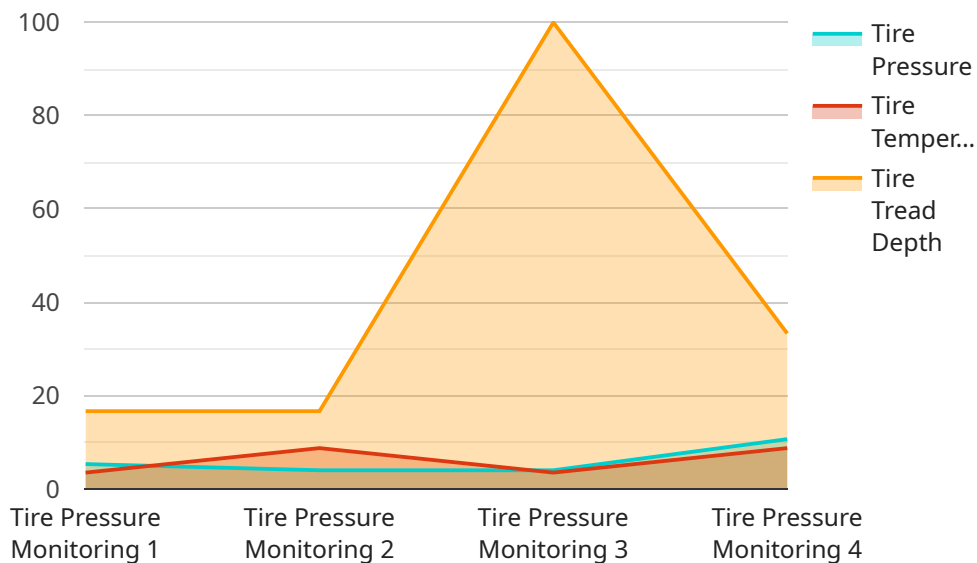
- 1. Fleet Management:** Samui TPMS provides businesses with a comprehensive view of their fleet's tire pressure, allowing them to optimize tire maintenance and reduce downtime. By monitoring tire pressure in real-time, businesses can identify and address potential issues before they lead to costly breakdowns or accidents.
- 2. Fuel Efficiency:** Properly inflated tires improve fuel efficiency by reducing rolling resistance. Samui TPMS helps businesses maintain optimal tire pressure, resulting in reduced fuel consumption and lower operating costs.
- 3. Safety and Compliance:** Underinflated or overinflated tires can compromise vehicle safety and handling. Samui TPMS ensures that tires are maintained at the correct pressure, enhancing vehicle stability and reducing the risk of accidents. It also helps businesses comply with industry regulations and safety standards.
- 4. Tire Life Extension:** Maintaining proper tire pressure extends the life of tires by reducing uneven wear and tear. Samui TPMS helps businesses identify and address tire pressure issues early on, preventing premature tire replacement and saving on maintenance costs.
- 5. Remote Monitoring:** Samui TPMS allows businesses to monitor tire pressure remotely, eliminating the need for manual inspections. This saves time and resources, enabling businesses to focus on other critical operations.
- 6. Data Analytics:** Samui TPMS provides businesses with valuable insights into tire pressure trends and patterns. By analyzing historical data, businesses can identify areas for improvement, optimize maintenance schedules, and make data-driven decisions to enhance fleet performance.

Samui Tire Pressure Monitoring offers businesses a range of benefits, including improved fleet management, fuel efficiency, safety, tire life extension, remote monitoring, and data analytics. By

leveraging this technology, businesses can optimize their operations, reduce costs, and enhance the safety and efficiency of their fleet.

# API Payload Example

The provided payload pertains to Samui Tire Pressure Monitoring (TPMS), an advanced technological solution designed to empower businesses with real-time monitoring and management capabilities for their vehicle tire pressure.



DATA VISUALIZATION OF THE PAYLOADS FOCUS

Leveraging wireless sensors and cloud-based analytics, Samui TPMS offers a comprehensive fleet management system that enables businesses to optimize tire maintenance, minimize downtime, enhance fuel efficiency, ensure vehicle safety and compliance, extend tire life, streamline operations with remote monitoring capabilities, and gain valuable insights through data analytics for informed decision-making. By leveraging Samui TPMS, businesses can unlock a range of benefits that contribute to improved fleet management, cost reduction, and enhanced safety and efficiency.

```
▼ [
  ▼ {
    "device_name": "Samui Tire Pressure Monitoring",
    "sensor_id": "STPM12345",
    ▼ "data": {
      "sensor_type": "Tire Pressure Monitoring",
      "location": "Factory",
      "tire_pressure": 32,
      "tire_temperature": 35,
      "tire_tread_depth": 8,
      "tire_rotation_status": "OK",
      "tire_balance_status": "OK",
      "tire_alignment_status": "OK",
      "factory_id": "FACTORY12345",
      "plant_id": "PLANT67890",
    }
  }
]
```

```
"production_line": "LINE1",  
"shift": "DAY",  
"operator_id": "OPERATOR12345"
```

```
}
```

```
}
```

```
]
```

# Samui Tire Pressure Monitoring Licensing

Samui Tire Pressure Monitoring (TPMS) is a comprehensive solution that provides businesses with real-time monitoring and management capabilities for their vehicle tire pressure. To ensure optimal performance and value, we offer two subscription plans:

## Samui TPMS Standard Subscription

- Includes all the basic features of the Samui TPMS solution, including real-time tire pressure monitoring, fleet management, and fuel efficiency reporting.
- Suitable for businesses with smaller fleets or basic tire pressure monitoring needs.

## Samui TPMS Premium Subscription

- Includes all the features of the Standard Subscription, plus additional features such as predictive maintenance, safety and compliance reporting, and data analytics.
- Ideal for businesses with larger fleets or more complex tire pressure monitoring requirements.

Our licensing model is designed to provide flexibility and scalability for businesses of all sizes. The cost of a subscription will vary depending on the size of your fleet and the subscription plan you choose. Contact our team today for a customized quote.

In addition to our subscription plans, we also offer a range of support options to ensure that you get the most out of your Samui TPMS system. Our support team is available 24/7 to answer any questions you may have and provide technical assistance. We also offer training and documentation to help you get started with Samui TPMS and use it effectively.

With Samui TPMS, you can optimize your fleet operations, reduce costs, and improve the safety and efficiency of your vehicles. Contact us today to learn more about our licensing options and how Samui TPMS can benefit your business.

# Samui Tire Pressure Monitoring Hardware

Samui Tire Pressure Monitoring (TPMS) is an advanced technology that enables businesses to monitor and manage the tire pressure of their vehicles in real-time. The system consists of two main hardware components:

1. **Samui TPMS Sensor:** The Samui TPMS Sensor is a wireless sensor that attaches to each tire and monitors tire pressure in real-time. It transmits data to the Samui TPMS Gateway, which then sends the data to the cloud for analysis.
2. **Samui TPMS Gateway:** The Samui TPMS Gateway is a device that collects data from the Samui TPMS Sensors and transmits it to the cloud. It also provides a local interface for managing the Samui TPMS system.

The Samui TPMS hardware is designed to be easy to install and maintain. The sensors are small and lightweight, and they can be installed on any type of vehicle. The gateway is a compact device that can be mounted in a convenient location in the vehicle.

The Samui TPMS hardware is essential for the operation of the system. The sensors collect the tire pressure data, and the gateway transmits the data to the cloud. The cloud-based analytics platform then processes the data and provides businesses with insights into their fleet's tire pressure, fuel efficiency, safety, and compliance.



# Frequently Asked Questions:

## How does Samui TPMS work?

Samui TPMS uses wireless sensors that attach to each tire and monitor tire pressure in real-time. The sensors transmit data to the Samui TPMS Gateway, which then sends the data to the cloud for analysis. You can access the data through a user-friendly dashboard, which provides insights into tire pressure, fleet performance, and fuel efficiency.

---

## What are the benefits of using Samui TPMS?

Samui TPMS offers a number of benefits, including improved fleet management, fuel efficiency, safety and compliance, tire life extension, remote monitoring, and data analytics. By using Samui TPMS, you can optimize your fleet operations, reduce costs, and improve the safety and efficiency of your vehicles.

---

## How much does Samui TPMS cost?

The cost of implementing Samui TPMS will vary depending on the size and complexity of your fleet, as well as the subscription plan you choose. However, as a general guide, you can expect to pay between \$1,000 and \$5,000 per vehicle, including hardware, software, and support.

---

## How long does it take to implement Samui TPMS?

The time to implement Samui TPMS will vary depending on the size and complexity of your fleet, as well as the availability of resources. However, our team will work closely with you to determine the most efficient implementation plan.

---

## What kind of support do you offer?

We offer a range of support options to ensure that you get the most out of your Samui TPMS system. Our support team is available 24/7 to answer any questions you may have and provide technical assistance. We also offer training and documentation to help you get started with Samui TPMS and use it effectively.

---

# Project Timeline and Costs for Samui Tire Pressure Monitoring

## Consultation Period

Duration: 1-2 hours

Details:

1. Discuss specific needs and requirements
2. Provide a detailed overview of the Samui TPMS solution
3. Answer questions and provide guidance on the implementation process

## Implementation Timeline

Estimate: 4-6 weeks

Details:

1. Hardware installation on vehicles
2. Software configuration and setup
3. User training and onboarding
4. Data integration and customization (if required)
5. System testing and validation

## Cost Range

Price Range Explained:

The cost of implementing Samui TPMS will vary depending on the size and complexity of your fleet, as well as the subscription plan you choose.

General Guide:

- Hardware, software, and support: \$1,000 - \$5,000 per vehicle

## Subscription Plans

Samui TPMS offers two subscription plans:

- **Standard Subscription:** Includes basic features such as real-time tire pressure monitoring, fleet management, and fuel efficiency reporting.
- **Premium Subscription:** Includes all features of the Standard Subscription, plus additional features such as predictive maintenance, safety and compliance reporting, and data analytics.

# Meet Our Key Players in Project Management

Get to know the experienced leadership driving our project management forward: Sandeep Bharadwaj, a seasoned professional with a rich background in securities trading and technology entrepreneurship, and Stuart Dawsons, our Lead AI Engineer, spearheading innovation in AI solutions. Together, they bring decades of expertise to ensure the success of our projects.



## Stuart Dawsons

### Lead AI Engineer

Under Stuart Dawsons' leadership, our lead engineer, the company stands as a pioneering force in engineering groundbreaking AI solutions. Stuart brings to the table over a decade of specialized experience in machine learning and advanced AI solutions. His commitment to excellence is evident in our strategic influence across various markets. Navigating global landscapes, our core aim is to deliver inventive AI solutions that drive success internationally. With Stuart's guidance, expertise, and unwavering dedication to engineering excellence, we are well-positioned to continue setting new standards in AI innovation.



## Sandeep Bharadwaj

### Lead AI Consultant

As our lead AI consultant, Sandeep Bharadwaj brings over 29 years of extensive experience in securities trading and financial services across the UK, India, and Hong Kong. His expertise spans equities, bonds, currencies, and algorithmic trading systems. With leadership roles at DE Shaw, Tradition, and Tower Capital, Sandeep has a proven track record in driving business growth and innovation. His tenure at Tata Consultancy Services and Moody's Analytics further solidifies his proficiency in OTC derivatives and financial analytics. Additionally, as the founder of a technology company specializing in AI, Sandeep is uniquely positioned to guide and empower our team through its journey with our company. Holding an MBA from Manchester Business School and a degree in Mechanical Engineering from Manipal Institute of Technology, Sandeep's strategic insights and technical acumen will be invaluable assets in advancing our AI initiatives.